

Tollip Polyclonal Antibody
Catalog # AP72878**Specification****Tollip Polyclonal Antibody - Product Information**

Application	WB
Primary Accession	Q9H0E2
Reactivity	Human
Host	Rabbit
Clonality	Polyclonal

Tollip Polyclonal Antibody - Additional Information**Gene ID** 54472**Other Names**

TOLLIP; Toll-interacting protein

Dilution

WB~~Western Blot: 1/500 - 1/2000. Immunohistochemistry: 1/100 - 1/300. ELISA: 1/40000. Not yet tested in other applications.

Format

Liquid in PBS containing 50% glycerol, 0.5% BSA and 0.09% (W/V) sodium azide.

Storage Conditions

-20°C

Tollip Polyclonal Antibody - Protein Information**Name** TOLLIP**Function**

Component of the signaling pathway of IL-1 and Toll-like receptors (PubMed: [10854325](http://www.uniprot.org/citations/10854325), PubMed: [11751856](http://www.uniprot.org/citations/11751856)). Inhibits cell activation by microbial products. Recruits IRAK1 to the IL-1 receptor complex (PubMed: [10854325](http://www.uniprot.org/citations/10854325)). Inhibits IRAK1 phosphorylation and kinase activity (PubMed: [11751856](http://www.uniprot.org/citations/11751856)). Connects the ubiquitin pathway to autophagy by functioning as a ubiquitin-ATG8 family adapter and thus mediating autophagic clearance of ubiquitin conjugates (PubMed: [25042851](http://www.uniprot.org/citations/25042851)). The TOLLIP-dependent selective autophagy pathway plays an important role in clearance of cytotoxic polyQ protein aggregates (PubMed: [25042851](http://www.uniprot.org/citations/25042851)). In a complex with TOM1, recruits ubiquitin-conjugated proteins onto early endosomes (PubMed: [15047686](http://www.uniprot.org/citations/15047686)). Binds to phosphatidylinositol 3-phosphate (PtdIns(3)P)

(PubMed:26320582).

Cellular Location

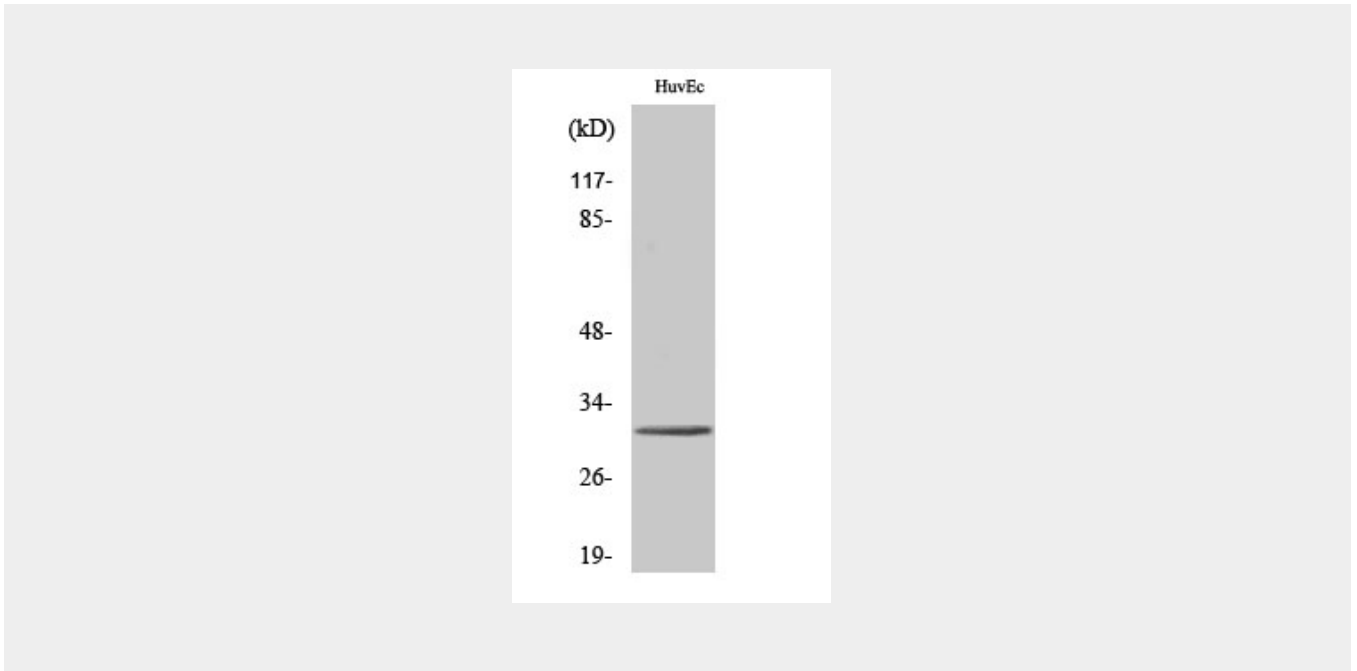
Cytoplasm. Endosome. Early endosome Note=Localized to endo/exosomal vesicles

Tollip Polyclonal Antibody - Protocols

Provided below are standard protocols that you may find useful for product applications.

- [Western Blot](#)
- [Blocking Peptides](#)
- [Dot Blot](#)
- [Immunohistochemistry](#)
- [Immunofluorescence](#)
- [Immunoprecipitation](#)
- [Flow Cytometry](#)
- [Cell Culture](#)

Tollip Polyclonal Antibody - Images



Tollip Polyclonal Antibody - Background

Component of the signaling pathway of IL-1 and Toll-like receptors. Inhibits cell activation by microbial products. Recruits IRAK1 to the IL-1 receptor complex. Inhibits IRAK1 phosphorylation and kinase activity (PubMed:11751856). Connects the ubiquitin pathway to autophagy by functioning as a ubiquitin- ATG8 family adapter and thus mediating autophagic clearance of ubiquitin conjugates. The TOLLIP-dependent selective autophagy pathway plays an important role in clearance of cytotoxic polyQ proteins aggregates (PubMed:25042851).