

**Tie-1 Polyclonal Antibody**  
Catalog # AP72832**Specification**

---

**Tie-1 Polyclonal Antibody - Product Information**

Application	IHC
Primary Accession	<a href="#">P35590</a>
Reactivity	Human, Mouse, Rat
Host	Rabbit
Clonality	Polyclonal

**Tie-1 Polyclonal Antibody - Additional Information****Gene ID** 7075**Other Names**

TIE1; TIE; Tyrosine-protein kinase receptor Tie-1

**Dilution**

IHC~IHC-p: 100-300. Western Blot: 1/500 - 1/2000. ELISA: 1/10000. Not yet tested in other applications.

**Format**

Liquid in PBS containing 50% glycerol, 0.5% BSA and 0.09% (W/V) sodium azide.

**Storage Conditions**

-20°C

**Tie-1 Polyclonal Antibody - Protein Information****Name** TIE1**Synonyms** TIE**Function**

Transmembrane tyrosine-protein kinase that may modulate TEK/TIE2 activity and contribute to the regulation of angiogenesis.

**Cellular Location**

Cell membrane; Single-pass type I membrane protein

**Tissue Location**

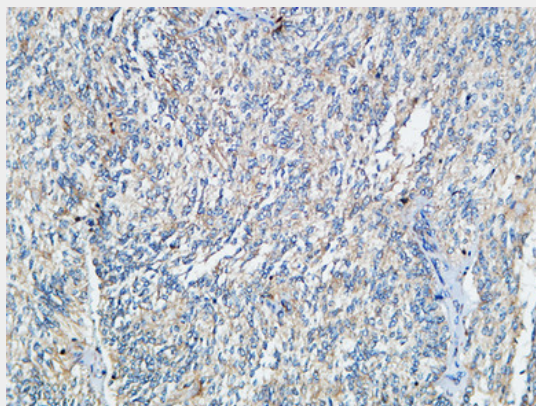
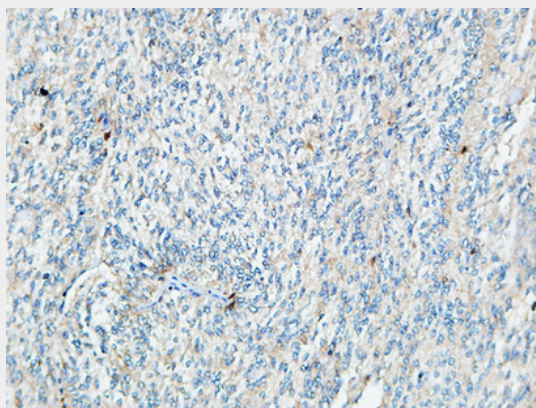
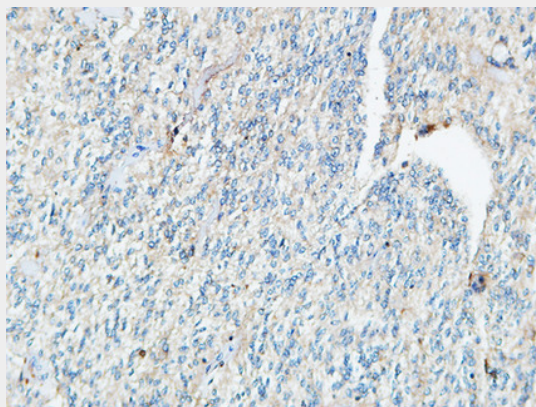
Specifically expressed in developing vascular endothelial cells.

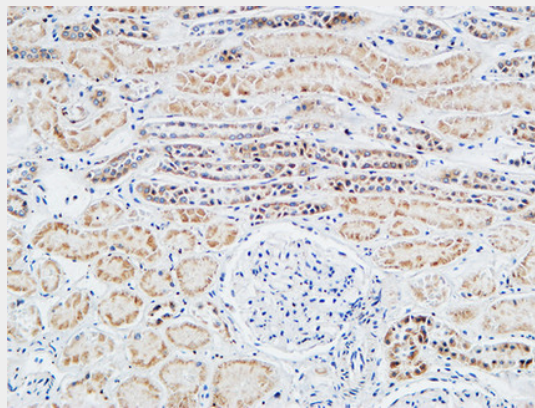
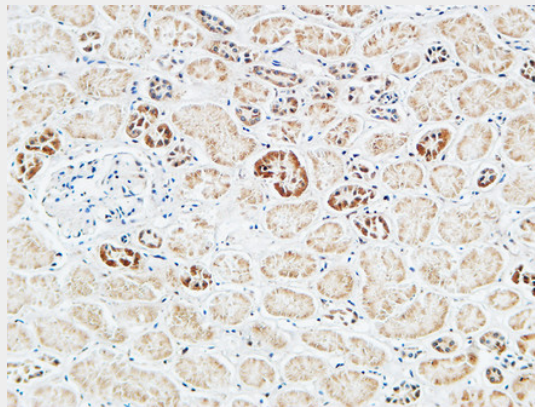
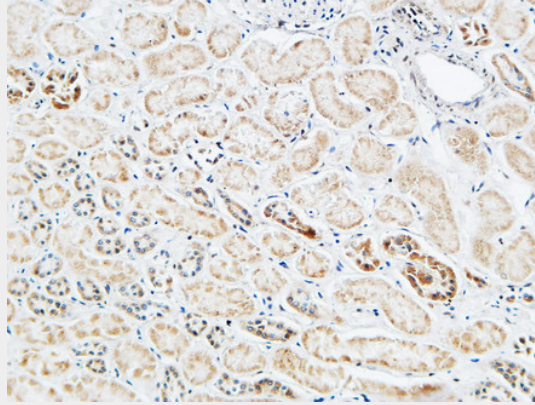
**Tie-1 Polyclonal Antibody - Protocols**

Provided below are standard protocols that you may find useful for product applications.

- [Western Blot](#)
- [Blocking Peptides](#)
- [Dot Blot](#)
- [Immunohistochemistry](#)
- [Immunofluorescence](#)
- [Immunoprecipitation](#)
- [Flow Cytometry](#)
- [Cell Culture](#)

### **Tie-1 Polyclonal Antibody - Images**





### **Tie-1 Polyclonal Antibody - Background**

Transmembrane tyrosine-protein kinase that may modulate TEK/TIE2 activity and contribute to the regulation of angiogenesis.