

TFIIE- β Polyclonal Antibody
Catalog # AP72799**Specification**

TFIIE- β Polyclonal Antibody - Product Information

| | |
|-------------------|------------------------|
| Application | WB |
| Primary Accession | P29084 |
| Reactivity | Human, Mouse |
| Host | Rabbit |
| Clonality | Polyclonal |

TFIIE- β Polyclonal Antibody - Additional Information**Gene ID** 2961**Other Names**

GTF2E2; TF2E2; Transcription initiation factor IIE subunit beta; TFIIE-beta; General transcription factor IIE subunit 2

Dilution

WB~~Western Blot: 1/500 - 1/2000. Immunohistochemistry: 1/100 - 1/300. ELISA: 1/20000. Not yet tested in other applications.

Format

Liquid in PBS containing 50% glycerol, 0.5% BSA and 0.09% (W/V) sodium azide.

Storage Conditions

-20°C

TFIIE- β Polyclonal Antibody - Protein Information**Name** GTF2E2**Synonyms** TF2E2**Function**

Recruits TFIIH to the initiation complex and stimulates the RNA polymerase II C-terminal domain kinase and DNA-dependent ATPase activities of TFIIH. Both TFIIH and TFIIE are required for promoter clearance by RNA polymerase.

Cellular Location

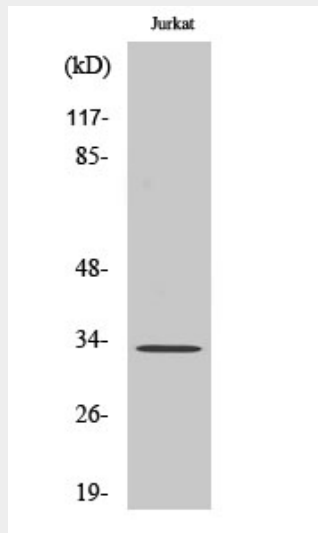
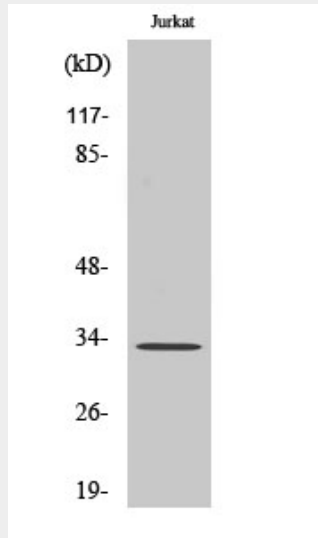
Nucleus.

TFIIE- β Polyclonal Antibody - Protocols

Provided below are standard protocols that you may find useful for product applications.

- [Western Blot](#)
- [Blocking Peptides](#)
- [Dot Blot](#)
- [Immunohistochemistry](#)
- [Immunofluorescence](#)
- [Immunoprecipitation](#)
- [Flow Cytometry](#)
- [Cell Culture](#)

TFII β Polyclonal Antibody - Images



TFII β Polyclonal Antibody - Background

Recruits TFIIH to the initiation complex and stimulates the RNA polymerase II C-terminal domain kinase and DNA-dependent ATPase activities of TFIIH. Both TFIIH and TFII β are required for promoter clearance by RNA polymerase.