

TF Polyclonal Antibody
Catalog # AP72793**Specification**

TF Polyclonal Antibody - Product Information

Application	WB
Primary Accession	P13726
Reactivity	Human, Monkey
Host	Rabbit
Clonality	Polyclonal

TF Polyclonal Antibody - Additional Information**Gene ID** 2152**Other Names**

F3; Tissue factor; TF; Coagulation factor III; Thromboplastin; CD antigen CD142

Dilution

WB~~Western Blot: 1/500 - 1/2000. ELISA: 1/5000. Not yet tested in other applications.

Format

Liquid in PBS containing 50% glycerol, 0.5% BSA and 0.09% (W/V) sodium azide.

Storage Conditions

-20°C

TF Polyclonal Antibody - Protein Information**Name** F3**Function**

Initiates blood coagulation by forming a complex with circulating factor VII or VIIa. The [TF:VIIa] complex activates factors IX or X by specific limited proteolysis. TF plays a role in normal hemostasis by initiating the cell-surface assembly and propagation of the coagulation protease cascade.

Cellular Location

[Isoform 1]: Membrane; Single-pass type I membrane protein

Tissue Location

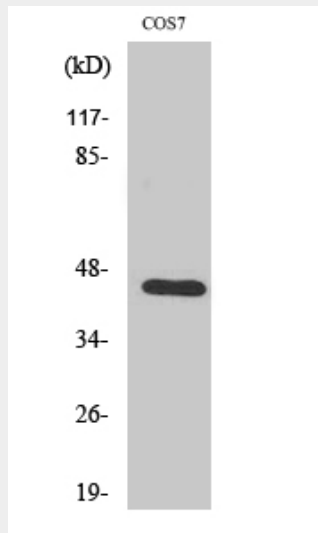
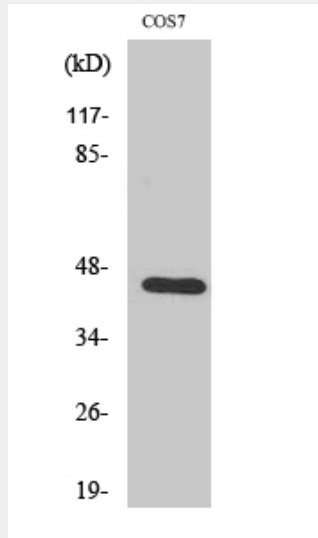
Lung, placenta and pancreas.

TF Polyclonal Antibody - Protocols

Provided below are standard protocols that you may find useful for product applications.

- [Western Blot](#)
- [Blocking Peptides](#)
- [Dot Blot](#)
- [Immunohistochemistry](#)
- [Immunofluorescence](#)
- [Immunoprecipitation](#)
- [Flow Cytometry](#)
- [Cell Culture](#)

TF Polyclonal Antibody - Images



TF Polyclonal Antibody - Background

Initiates blood coagulation by forming a complex with circulating factor VII or VIIa. The [TF:VIIa] complex activates factors IX or X by specific limited proteolysis. TF plays a role in normal hemostasis by initiating the cell-surface assembly and propagation of the coagulation protease cascade.