

**TEL Polyclonal Antibody**  
Catalog # AP72782**Specification**

---

**TEL Polyclonal Antibody - Product Information**

Application	WB
Primary Accession	<a href="#">P41212</a>
Reactivity	Human, Mouse, Rat
Host	Rabbit
Clonality	Polyclonal

**TEL Polyclonal Antibody - Additional Information****Gene ID** 2120**Other Names**

ETV6; TEL; TEL1; Transcription factor ETV6; ETS translocation variant 6; ETS-related protein Tel1; Tel

**Dilution**

WB~~Western Blot: 1/500 - 1/2000. Immunohistochemistry: 1/100 - 1/300. Immunofluorescence: 1/200 - 1/1000. ELISA: 1/5000. Not yet tested in other applications.

**Format**

Liquid in PBS containing 50% glycerol, 0.5% BSA and 0.09% (W/V) sodium azide.

**Storage Conditions**

-20°C

**TEL Polyclonal Antibody - Protein Information****Name** ETV6**Synonyms** TEL, TEL1**Function**

Transcriptional repressor; binds to the DNA sequence 5'- CCGGAAGT-3'. Plays a role in hematopoiesis and malignant transformation.

**Cellular Location**

Nucleus.

**Tissue Location**

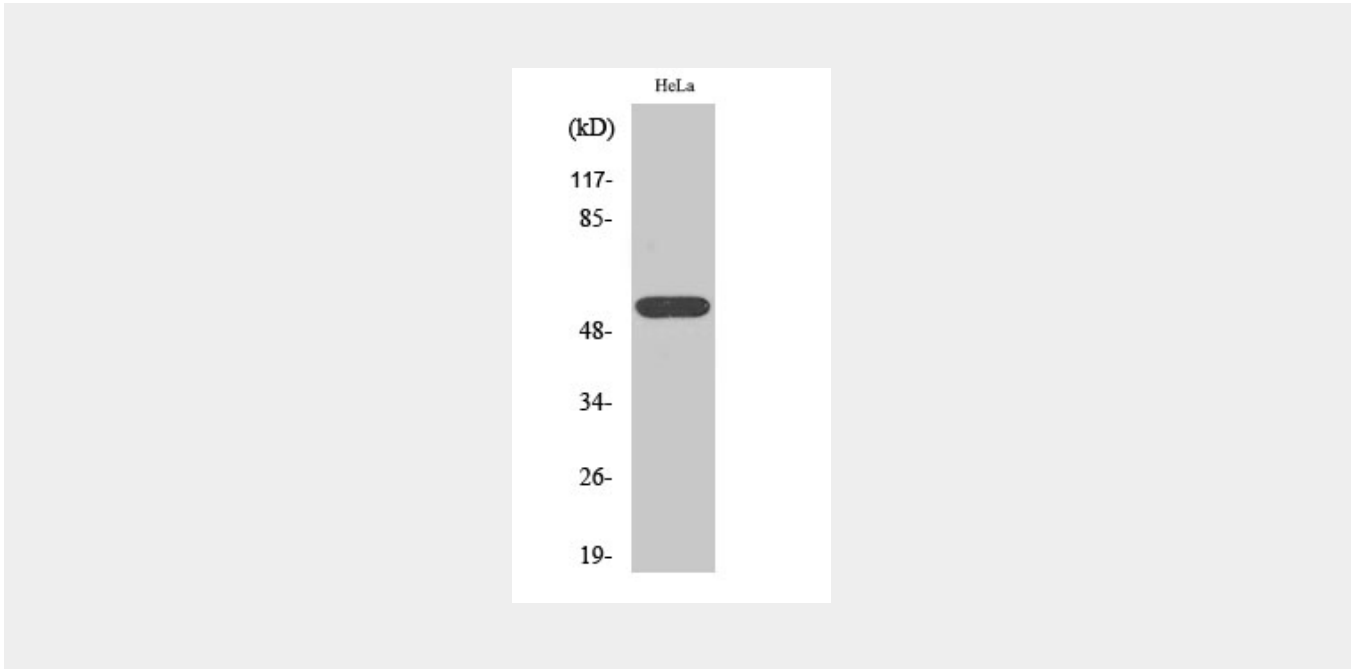
Ubiquitous.

**TEL Polyclonal Antibody - Protocols**

Provided below are standard protocols that you may find useful for product applications.

- [Western Blot](#)
- [Blocking Peptides](#)
- [Dot Blot](#)
- [Immunohistochemistry](#)
- [Immunofluorescence](#)
- [Immunoprecipitation](#)
- [Flow Cytometry](#)
- [Cell Culture](#)

#### **TEL Polyclonal Antibody - Images**



#### **TEL Polyclonal Antibody - Background**

Transcriptional repressor; binds to the DNA sequence 5'- CCGGAAGT-3'. Plays a role in hematopoiesis and malignant transformation.