

CASC3 Antibody (C-term)
Affinity Purified Rabbit Polyclonal Antibody (Pab)
Catalog # AP7264b**Specification**

CASC3 Antibody (C-term) - Product Information

Application	WB, IHC-P,E
Primary Accession	O15234
Other Accession	Q8K3X0 , A5D7H5 , NP_619601 , Q8K3W3
Reactivity	Human
Predicted	Bovine, Mouse, Rat
Host	Rabbit
Clonality	Polyclonal
Isotype	Rabbit IgG
Antigen Region	206-236

CASC3 Antibody (C-term) - Additional Information**Gene ID** 22794**Other Names**

Protein CASC3, Cancer susceptibility candidate gene 3 protein homolog, Metastatic lymph node gene 51 protein homolog, MLN 51 homolog, Protein barentsz, Btz, mBtz, Casc3, Mln51

Target/Specificity

This CASC3 antibody is generated from rabbits immunized with a KLH conjugated synthetic peptide between 206-236 amino acids of human CASC3.

DilutionWB~~1:1000
IHC-P~~1:10~50**Format**

Purified polyclonal antibody supplied in PBS with 0.09% (W/V) sodium azide. This antibody is purified through a protein A column, followed by peptide affinity purification.

Storage

Maintain refrigerated at 2-8°C for up to 2 weeks. For long term storage store at -20°C in small aliquots to prevent freeze-thaw cycles.

Precautions

CASC3 Antibody (C-term) is for research use only and not for use in diagnostic or therapeutic procedures.

CASC3 Antibody (C-term) - Protein Information**Name** CASC3

Synonyms MLN51 {ECO:0000303|PubMed:12080473}

Function Required for pre-mRNA splicing as component of the spliceosome (PubMed:[28502770](#), PubMed:[29301961](#)). Core component of the splicing-dependent multiprotein exon junction complex (EJC) deposited at splice junctions on mRNAs. The EJC is a dynamic structure consisting of core proteins and several peripheral nuclear and cytoplasmic associated factors that join the complex only transiently either during EJC assembly or during subsequent mRNA metabolism. The EJC marks the position of the exon-exon junction in the mature mRNA for the gene expression machinery and the core components remain bound to spliced mRNAs throughout all stages of mRNA metabolism thereby influencing downstream processes including nuclear mRNA export, subcellular mRNA localization, translation efficiency and nonsense-mediated mRNA decay (NMD). Stimulates the ATPase and RNA-helicase activities of EIF4A3. Plays a role in the stress response by participating in cytoplasmic stress granules assembly and by favoring cell recovery following stress. Component of the dendritic ribonucleoprotein particles (RNPs) in hippocampal neurons. May play a role in mRNA transport. Binds spliced mRNA in sequence-independent manner, 20-24 nucleotides upstream of mRNA exon-exon junctions. Binds poly(G) and poly(U) RNA homomer.

Cellular Location

Cytoplasm. Cytoplasm, perinuclear region {ECO:0000250|UniProtKB:Q8K3W3}. Nucleus. Nucleus speckle. Cytoplasm, Stress granule. Cytoplasm, Cytoplasmic ribonucleoprotein granule {ECO:0000250|UniProtKB:Q8K3X0}. Cell projection, dendrite {ECO:0000250|UniProtKB:Q8K3X0}. Note=Shuttles between the nucleus and the cytoplasm in a XPO1/CRM1-dependent manner. Transported to the cytoplasm as part of the exon junction complex (EJC) bound to mRNA (PubMed:15166247). In nuclear speckles, colocalizes with MAGOH. Under stress conditions, colocalizes with FMR1 and TIA1, but not MAGOH and RBM8A EJC core factors, in cytoplasmic stress granules (PubMed:17652158). In the dendrites of hippocampal neurons, localizes to dendritic ribonucleoprotein granules (By similarity) {ECO:0000250|UniProtKB:Q8K3X0, ECO:0000269|PubMed:15166247, ECO:0000269|PubMed:17652158}

Tissue Location

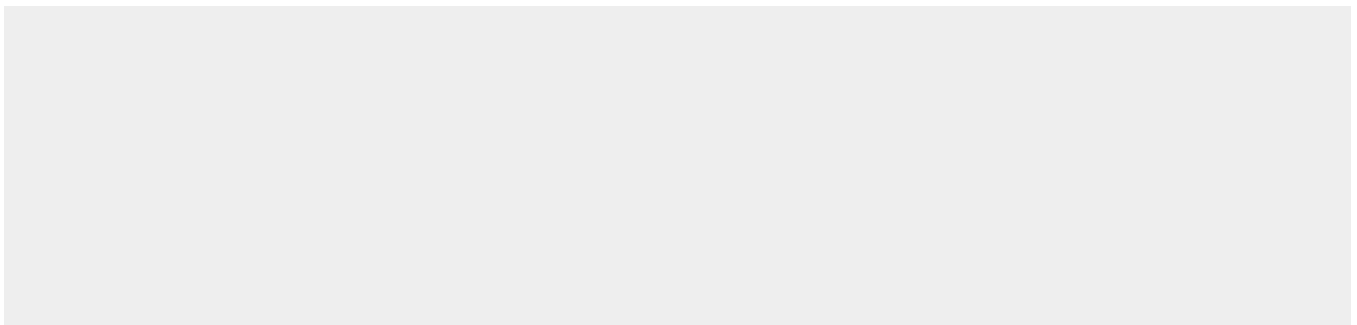
Widely expressed. Overexpressed in breast cancers and metastasis, as well as in gastric cancers

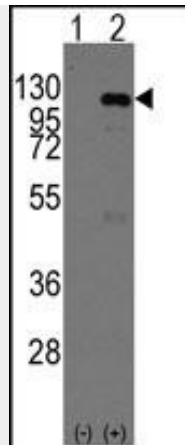
CASC3 Antibody (C-term) - Protocols

Provided below are standard protocols that you may find useful for product applications.

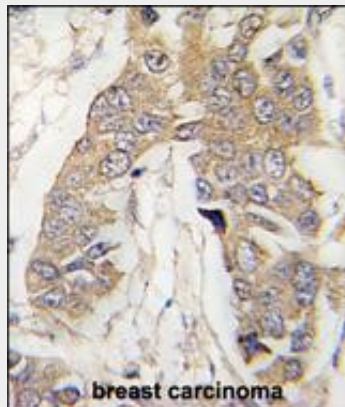
- [Western Blot](#)
- [Blocking Peptides](#)
- [Dot Blot](#)
- [Immunohistochemistry](#)
- [Immunofluorescence](#)
- [Immunoprecipitation](#)
- [Flow Cytometry](#)
- [Cell Culture](#)

CASC3 Antibody (C-term) - Images





Western blot analysis of CASC3 (arrow) using rabbit polyclonal CASC3 Antibody (Cat.#AP7264b). 293 cell lysates (2 ug/lane) either nontransfected (Lane 1) or transiently transfected with the CASC3 gene (Lane 2) (Origene Technologies).



Formalin-fixed and paraffin-embedded human breast carcinoma tissue reacted with CASC3 Antibody (C-term) (Cat.#AP7264b), which was peroxidase-conjugated to the secondary antibody, followed by DAB staining. This data demonstrates the use of this antibody for immunohistochemistry; clinical relevance has not been evaluated.

CASC3 Antibody (C-term) - Background

Component of the dendritic ribonucleoprotein particles (RNPs) in hippocampal neurons. May play a role in mRNA transport.

CASC3 Antibody (C-term) - References

- Macchi,P., J. Neurosci. 23 (13), 5778-5788 (2003)
- Degot,S., Oncogene 21 (28), 4422-4434 (2002)