

**Strad Polyclonal Antibody**  
Catalog # AP72647**Specification**

---

**Strad Polyclonal Antibody - Product Information**

Application	WB
Primary Accession	<a href="#">Q7RTN6</a>
Reactivity	Human, Mouse
Host	Rabbit
Clonality	Polyclonal

**Strad Polyclonal Antibody - Additional Information****Gene ID** 92335**Other Names**

STRADA; LYK5; STRAD; STE20-related kinase adapter protein alpha; STRAD alpha; STE20-related adapter protein; Serologically defined breast cancer antigen NY-BR-96

**Dilution**

WB~~Western Blot: 1/500 - 1/2000. Immunohistochemistry: 1/100 - 1/300. ELISA: 1/10000. Not yet tested in other applications.

**Format**

Liquid in PBS containing 50% glycerol, 0.5% BSA and 0.09% (W/V) sodium azide.

**Storage Conditions**

-20°C

**Strad Polyclonal Antibody - Protein Information****Name** STRADA**Synonyms** LYK5 {ECO:0000312|EMBL:AAP42280.1}, STRA**Function**

Pseudokinase which, in complex with CAB39/MO25 (CAB39/MO25alpha or CAB39L/MO25beta), binds to and activates STK11/LKB1. Adopts a closed conformation typical of active protein kinases and binds STK11/LKB1 as a pseudosubstrate, promoting conformational change of STK11/LKB1 in an active conformation.

**Cellular Location**

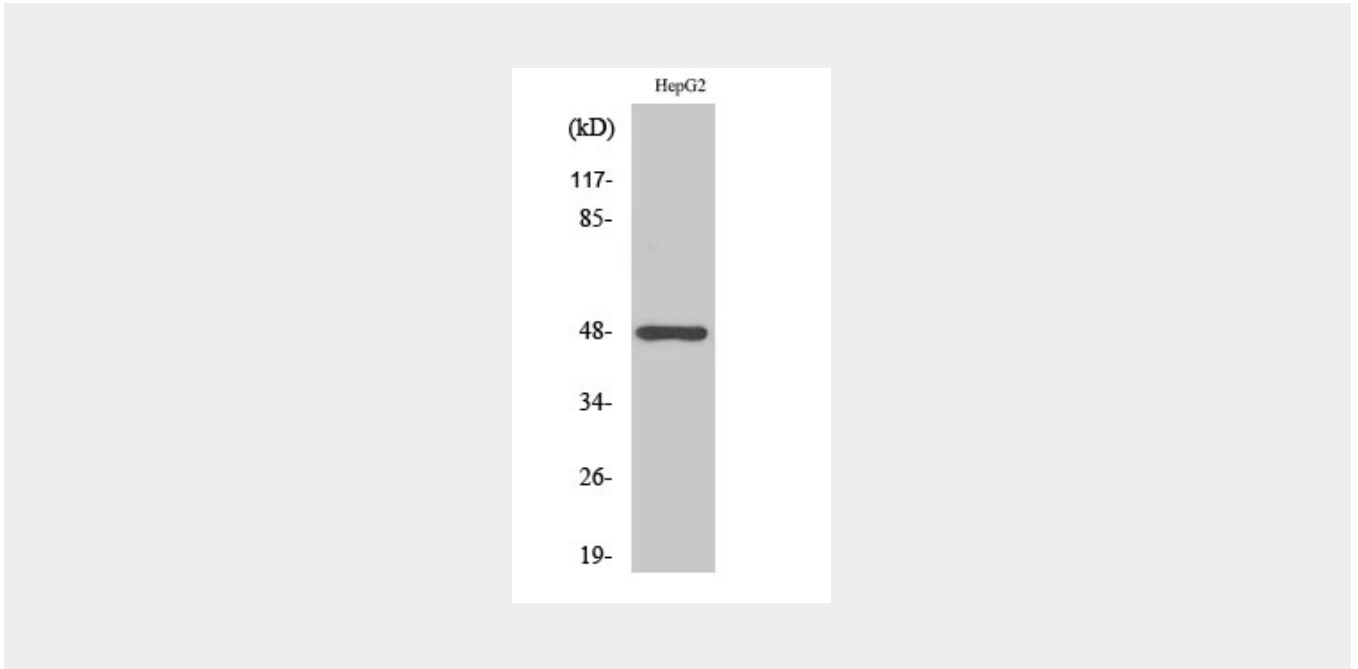
Nucleus. Cytoplasm

**Strad Polyclonal Antibody - Protocols**

Provided below are standard protocols that you may find useful for product applications.

- [Western Blot](#)
- [Blocking Peptides](#)
- [Dot Blot](#)
- [Immunohistochemistry](#)
- [Immunofluorescence](#)
- [Immunoprecipitation](#)
- [Flow Cytometry](#)
- [Cell Culture](#)

### Strad Polyclonal Antibody - Images



### Strad Polyclonal Antibody - Background

Pseudokinase which, in complex with CAB39/MO25 (CAB39/MO25alpha or CAB39L/MO25beta), binds to and activates STK11/LKB1. Adopts a closed conformation typical of active protein kinases and binds STK11/LKB1 as a pseudosubstrate, promoting conformational change of STK11/LKB1 in an active conformation.