

SRp20 Polyclonal Antibody
Catalog # AP72600**Specification**

SRp20 Polyclonal Antibody - Product Information

Application	WB
Primary Accession	P84103
Reactivity	Human, Mouse
Host	Rabbit
Clonality	Polyclonal

SRp20 Polyclonal Antibody - Additional Information**Gene ID** 6428**Other Names**

SRSF3; SFRS3; SRP20; Serine/arginine-rich splicing factor 3; Pre-mRNA-splicing factor SRP20; Splicing factor; arginine/serine-rich 3

Dilution

WB~~Western Blot: 1/500 - 1/2000. Immunohistochemistry: 1/100 - 1/300. Immunofluorescence: 1/200 - 1/1000. ELISA: 1/5000. Not yet tested in other applications.

Format

Liquid in PBS containing 50% glycerol, 0.5% BSA and 0.09% (W/V) sodium azide.

Storage Conditions

-20°C

SRp20 Polyclonal Antibody - Protein Information**Name** SRSF3**Synonyms** SFRS3, SRP20**Function**

Splicing factor, which binds the consensus motif 5'- C[ACU][AU]C[ACU][AC]C-3' within pre-mRNA and promotes specific exons inclusion during alternative splicing (PubMed: [17036044](http://www.uniprot.org/citations/17036044), PubMed: [26876937](http://www.uniprot.org/citations/26876937), PubMed: [32440474](http://www.uniprot.org/citations/32440474)). Interaction with YTHDC1, a RNA- binding protein that recognizes and binds N6-methyladenosine (m6A)-containing RNAs, promotes recruitment of SRSF3 to its mRNA-binding elements adjacent to m6A sites within exons (PubMed: [26876937](http://www.uniprot.org/citations/26876937)). Also functions as an adapter involved in mRNA nuclear export (PubMed: [11336712](http://www.uniprot.org/citations/11336712), PubMed: [18364396](http://www.uniprot.org/citations/18364396), PubMed: [28984244](http://www.uniprot.org/citations/28984244)).

Binds mRNA which is thought to be transferred to the NXF1-NXT1 heterodimer for export (TAP/NXF1 pathway); enhances NXF1-NXT1 RNA-binding activity (PubMed:11336712, PubMed:18364396). Involved in nuclear export of m6A- containing mRNAs via interaction with YTHDC1: interaction with YTHDC1 facilitates m6A-containing mRNA-binding to both SRSF3 and NXF1, promoting mRNA nuclear export (PubMed:28984244).

Cellular Location

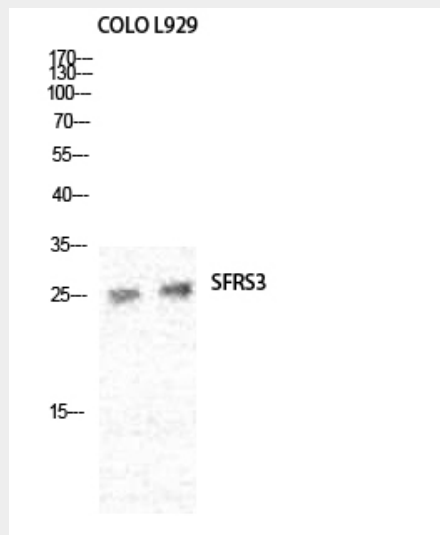
Nucleus. Nucleus speckle. Cytoplasm. Note=Recruited to nuclear speckles following interaction with YTHDC1.

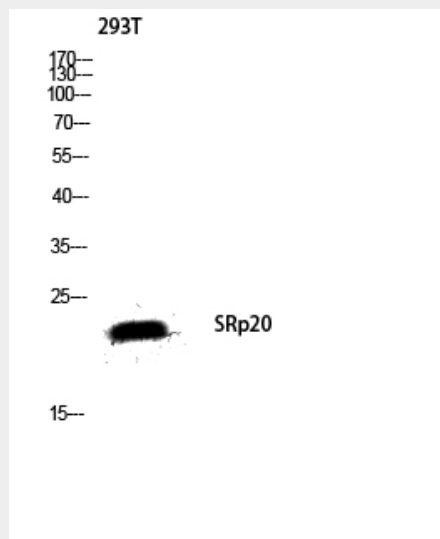
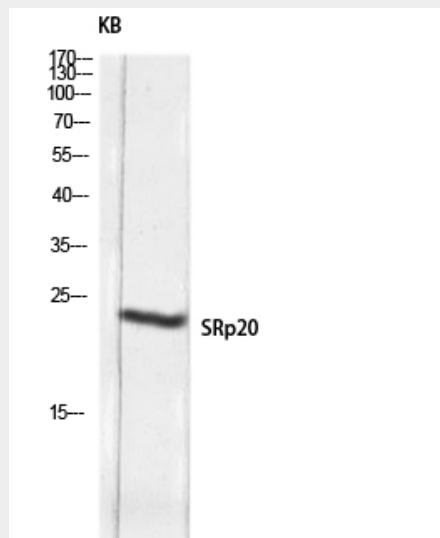
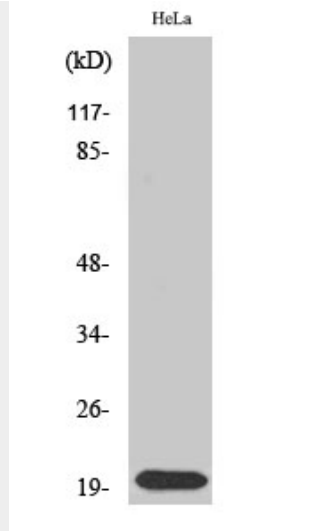
SRp20 Polyclonal Antibody - Protocols

Provided below are standard protocols that you may find useful for product applications.

- [Western Blot](#)
- [Blocking Peptides](#)
- [Dot Blot](#)
- [Immunohistochemistry](#)
- [Immunofluorescence](#)
- [Immunoprecipitation](#)
- [Flow Cytometry](#)
- [Cell Culture](#)

SRp20 Polyclonal Antibody - Images





SRp20 Polyclonal Antibody - Background

Splicing factor that specifically promotes exon- inclusion during alternative splicing (PubMed:26876937). Interaction with YTHDC1, a RNA-binding protein that recognizes and binds N6-methyladenosine (m6A)-containing RNAs, promotes recruitment of SRSF3 to its mRNA-binding elements adjacent to m6A sites, leading to exon-inclusion during alternative splicing (PubMed:26876937). Also functions as export adapter involved in mRNA nuclear export (PubMed:11336712, PubMed:18364396, PubMed:28984244). Binds mRNA which is thought to be transferred to the NXF1-NXT1 heterodimer for export (TAP/NXF1 pathway); enhances NXF1-NXT1 RNA-binding activity (PubMed:11336712, PubMed:18364396). Involved in nuclear export of m6A-containing mRNAs via interaction with YTHDC1: interaction with YTHDC1 facilitates m6A-containing mRNA-binding to both SRSF3 and NXF1, promoting mRNA nuclear export (PubMed:28984244). RNA-binding is semi-sequence specific (PubMed:17036044).