

Spindlin-1 Polyclonal Antibody
Catalog # AP72568**Specification****Spindlin-1 Polyclonal Antibody - Product Information**

Application	WB
Primary Accession	Q9Y657
Reactivity	Human, Mouse, Rat
Host	Rabbit
Clonality	Polyclonal

Spindlin-1 Polyclonal Antibody - Additional Information**Gene ID** 10927**Other Names**

SPIN1; OCR; SPIN; Spindlin-1; Ovarian cancer-related protein

Dilution

WB~Western Blot: 1/500 - 1/2000. Immunohistochemistry: 1/100 - 1/300. Immunofluorescence: 1/200 - 1/1000. ELISA: 1/20000. Not yet tested in other applications.

Format

Liquid in PBS containing 50% glycerol, 0.5% BSA and 0.09% (W/V) sodium azide.

Storage Conditions

-20°C

Spindlin-1 Polyclonal Antibody - Protein Information**Name** SPIN1**Synonyms** OCR, SPIN**Function**

Chromatin reader that specifically recognizes and binds histone H3 both trimethylated at 'Lys-4' and asymmetrically dimethylated at 'Arg-8' (H3K4me3 and H3R8me2a) and acts as an activator of Wnt signaling pathway downstream of PRMT2. In case of cancer, promotes cell cancer proliferation via activation of the Wnt signaling pathway (PubMed:[24589551](http://www.uniprot.org/citations/24589551)).

Overexpression induces metaphase arrest and chromosomal instability. Localizes to active rDNA loci and promotes the expression of rRNA genes (PubMed:[21960006](http://www.uniprot.org/citations/21960006)). May play a role in cell- cycle regulation during the transition from gamete to embryo. Involved in oocyte meiotic resumption, a process that takes place before ovulation to resume meiosis of oocytes blocked in prophase I: may act by regulating maternal transcripts to control meiotic resumption.

Cellular Location

Nucleus. Nucleus, nucleolus

Tissue Location

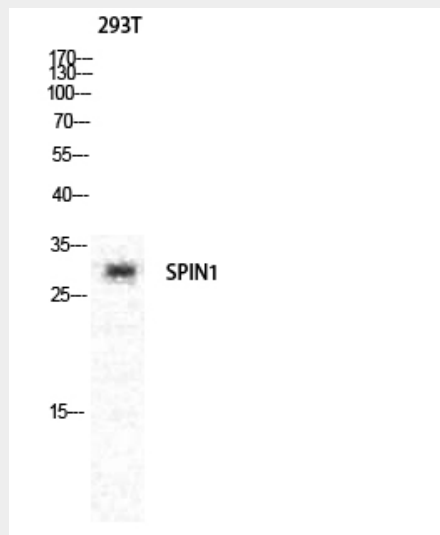
Highly expressed in ovarian cancer tissues.

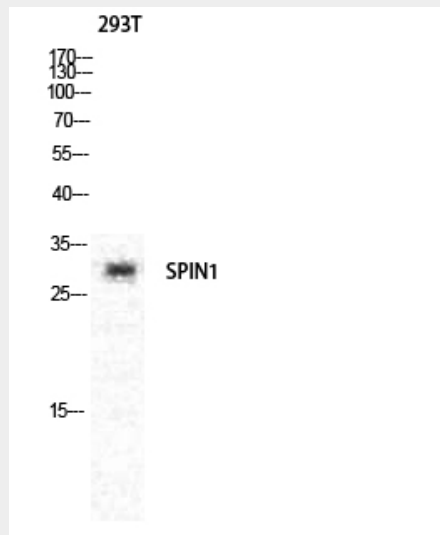
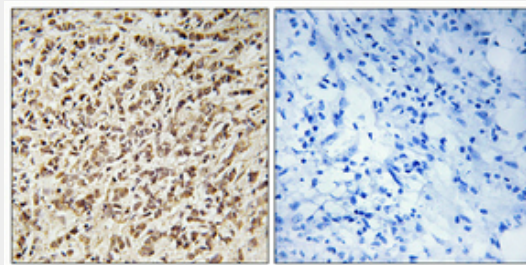
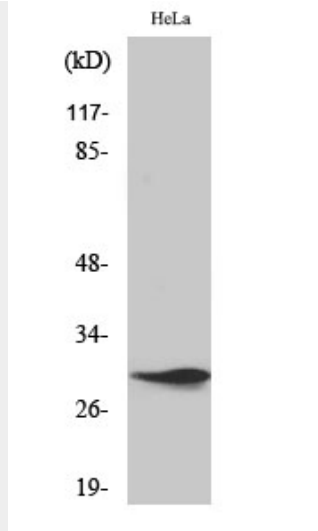
Spindlin-1 Polyclonal Antibody - Protocols

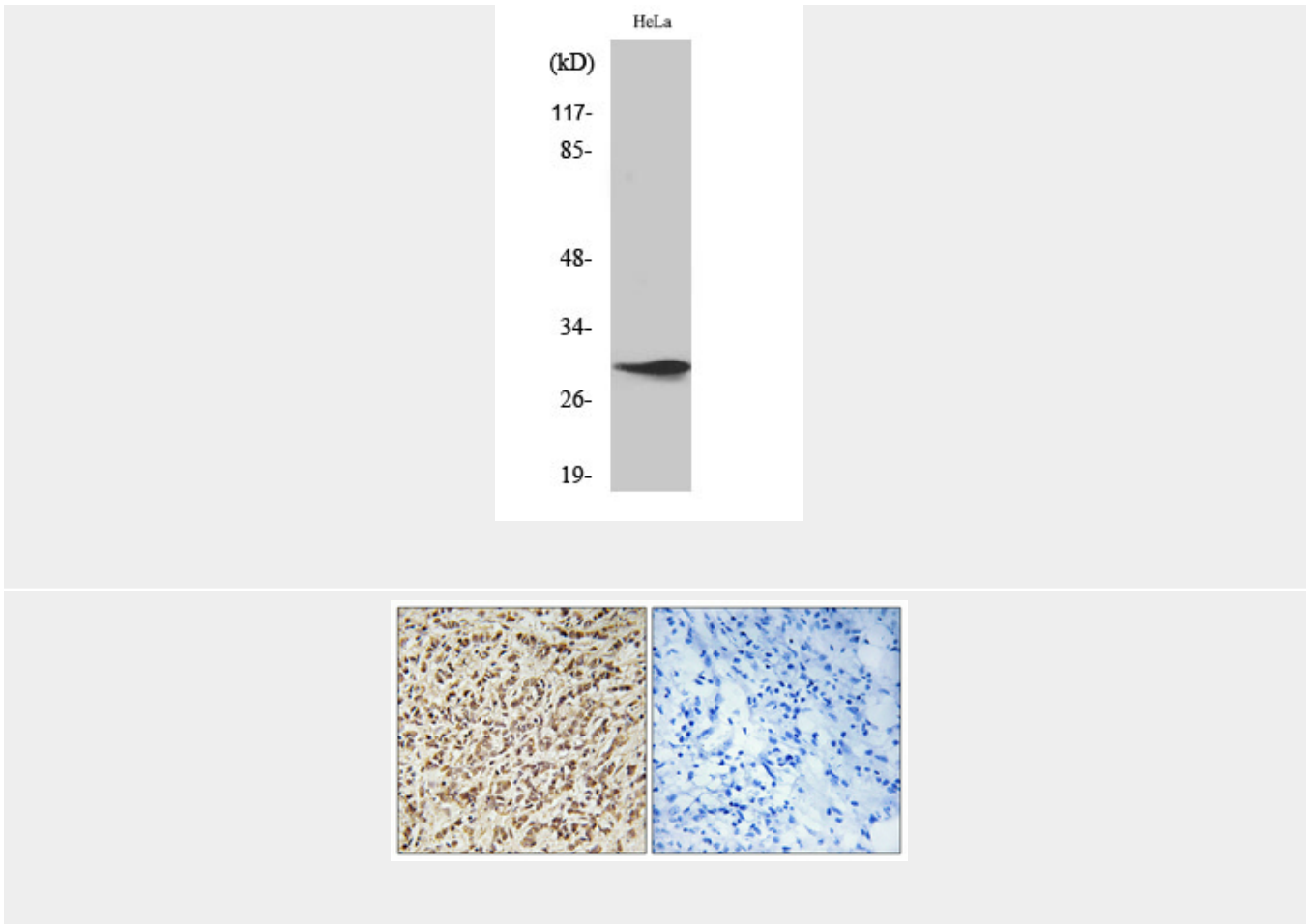
Provided below are standard protocols that you may find useful for product applications.

- [Western Blot](#)
- [Blocking Peptides](#)
- [Dot Blot](#)
- [Immunohistochemistry](#)
- [Immunofluorescence](#)
- [Immunoprecipitation](#)
- [Flow Cytometry](#)
- [Cell Culture](#)

Spindlin-1 Polyclonal Antibody - Images







Spindlin-1 Polyclonal Antibody - Background

Chromatin reader that specifically recognizes and binds histone H3 both trimethylated at 'Lys-4' and asymmetrically dimethylated at 'Arg-8' (H3K4me3 and H3R8me2a) and acts as an activator of Wnt signaling pathway downstream of PRMT2. In case of cancer, promotes cell cancer proliferation via activation of the Wnt signaling pathway (PubMed:24589551). Overexpression induces metaphase arrest and chromosomal instability. Localizes to active rDNA loci and promotes the expression of rRNA genes (PubMed:21960006). May play a role in cell-cycle regulation during the transition from gamete to embryo. Involved in oocyte meiotic resumption, a process that takes place before ovulation to resume meiosis of oocytes blocked in prophase I: may act by regulating maternal transcripts to control meiotic resumption.