

Somatostatin Polyclonal Antibody
Catalog # AP72548**Specification**

Somatostatin Polyclonal Antibody - Product Information

Application	WB
Primary Accession	P61278
Reactivity	Human, Mouse, Rat
Host	Rabbit
Clonality	Polyclonal

Somatostatin Polyclonal Antibody - Additional Information**Gene ID** 6750**Other Names**

SST; Somatostatin; Growth hormone release-inhibiting factor

Dilution

WB~~Western Blot: 1/500 - 1/2000. Immunohistochemistry: 1/100 - 1/300. ELISA: 1/5000. Not yet tested in other applications.

Format

Liquid in PBS containing 50% glycerol, 0.5% BSA and 0.09% (W/V) sodium azide.

Storage Conditions

-20°C

Somatostatin Polyclonal Antibody - Protein Information**Name** SST**Function**

[Somatostatin-14]: Inhibits the secretion of pituitary hormones, including that of growth hormone/somatotropin (GH1), PRL, ACTH, luteinizing hormone (LH) and TSH. Also impairs ghrelin- and GnRH- stimulated secretion of GH1 and LH; the inhibition of ghrelin- stimulated secretion of GH1 can be further increased by neuronostatin.

Cellular Location

Secreted {ECO:0000250|UniProtKB:P60042}.

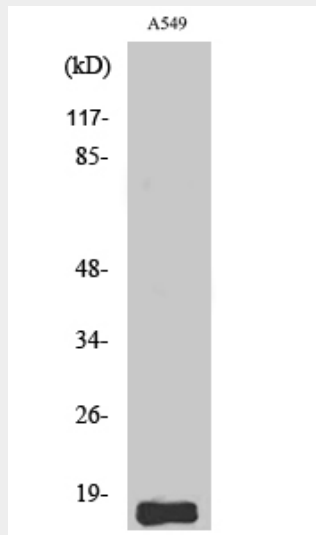
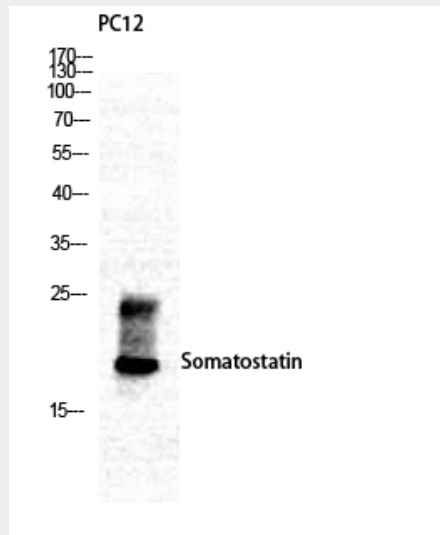
Somatostatin Polyclonal Antibody - Protocols

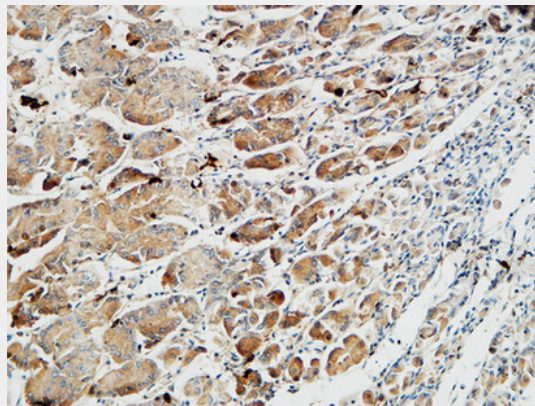
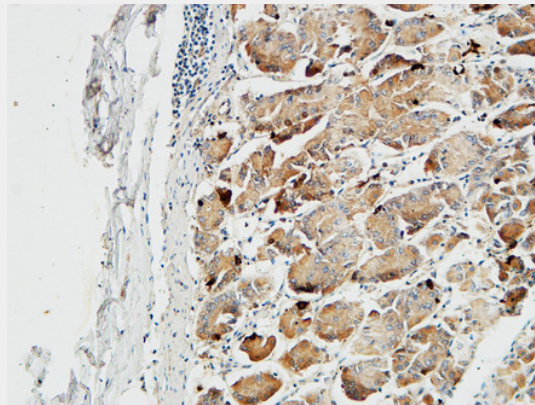
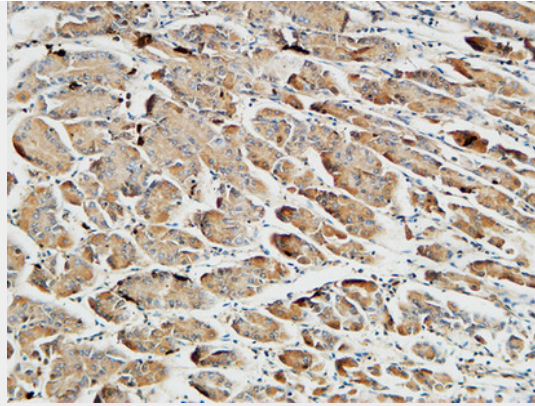
Provided below are standard protocols that you may find useful for product applications.

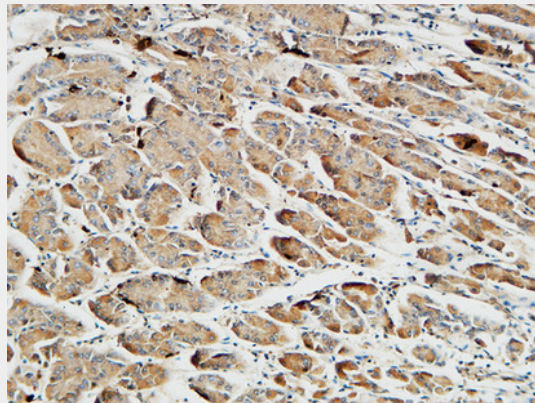
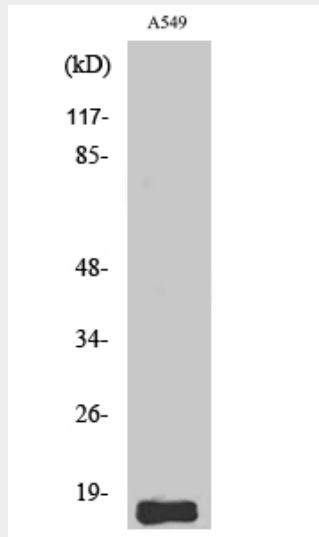
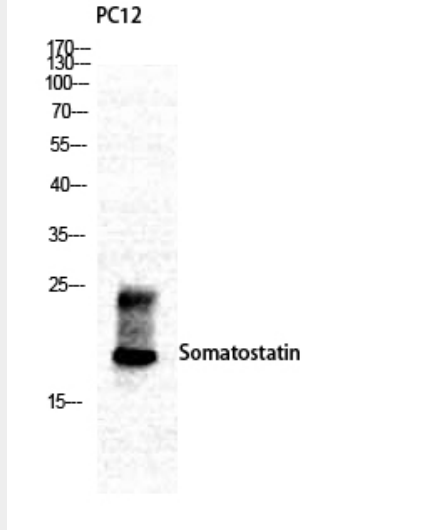
- [Western Blot](#)

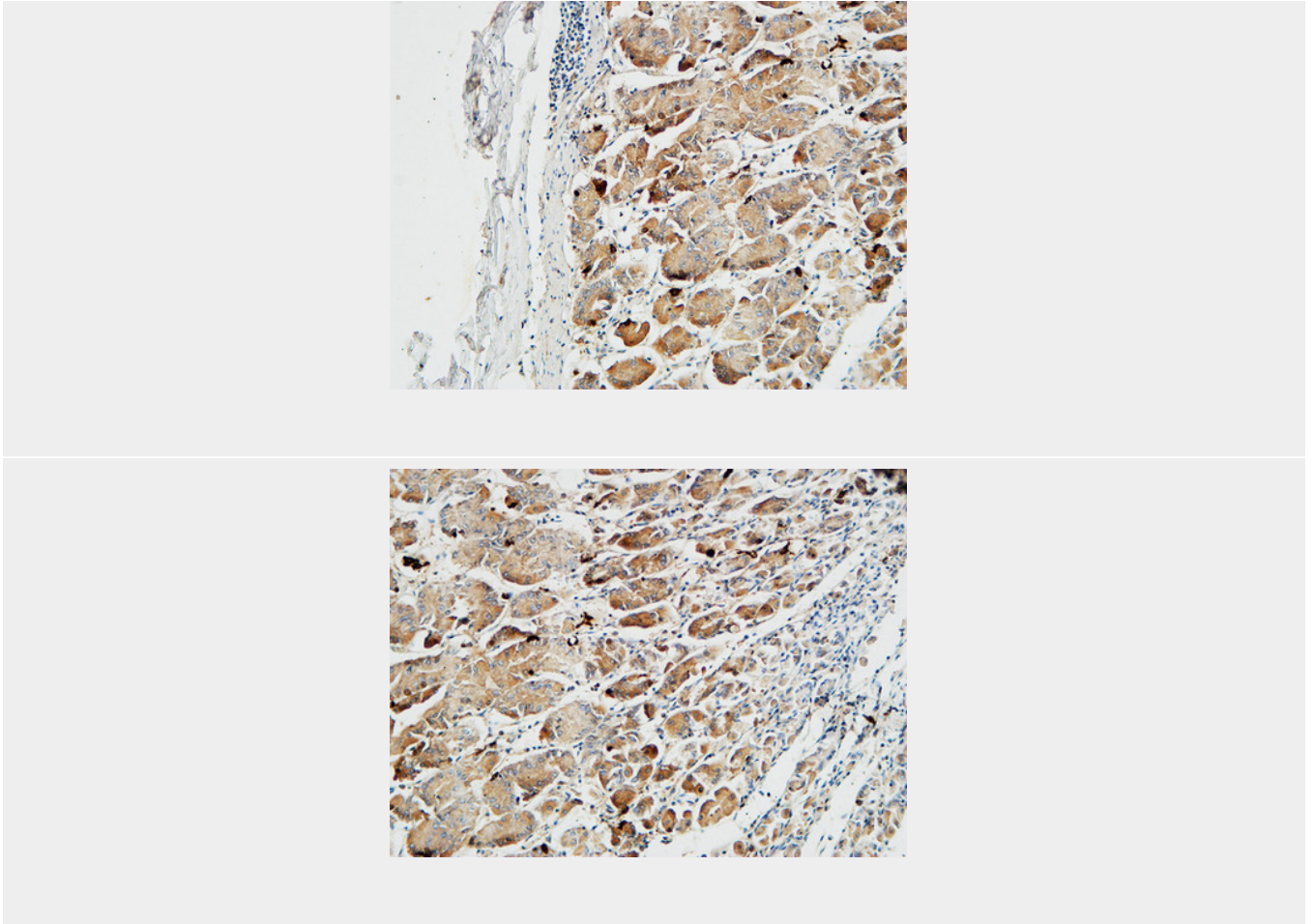
- [Blocking Peptides](#)
- [Dot Blot](#)
- [Immunohistochemistry](#)
- [Immunofluorescence](#)
- [Immunoprecipitation](#)
- [Flow Cytometry](#)
- [Cell Culture](#)

Somatostatin Polyclonal Antibody - Images









Somatostatin Polyclonal Antibody - Background

Somatostatin inhibits the release of somatotropin.