

Septin 1 Polyclonal Antibody
Catalog # AP72428**Specification**

Septin 1 Polyclonal Antibody - Product Information

Application	WB
Primary Accession	Q8WYJ6
Reactivity	Human, Mouse, Rat
Host	Rabbit
Clonality	Polyclonal

Septin 1 Polyclonal Antibody - Additional Information**Gene ID** 1731**Other Names**

SEPT1; DIFF6; PNUTL3; Septin-1; LARP; Peanut-like protein 3; Serologically defined breast cancer antigen NY-BR-24

Dilution

WB~~Western Blot: 1/500 - 1/2000. Immunohistochemistry: 1/100 - 1/300. ELISA: 1/20000. Not yet tested in other applications.

Format

Liquid in PBS containing 50% glycerol, 0.5% BSA and 0.09% (W/V) sodium azide.

Storage Conditions

-20°C

Septin 1 Polyclonal Antibody - Protein Information**Name** SEPTIN1 ([HGNC:2879](#))**Synonyms** DIFF6, PNUTL3, SEPT1**Function**

Filament-forming cytoskeletal GTPase (By similarity). May play a role in cytokinesis (Potential).

Cellular Location

Cytoplasm. Cytoplasm, cytoskeleton. Cytoplasm, cytoskeleton, microtubule organizing center, centrosome. Midbody. Note=Remains at the centrosomes and the nearby microtubules throughout mitosis. Localizes to the midbody during cytokinesis

Tissue Location

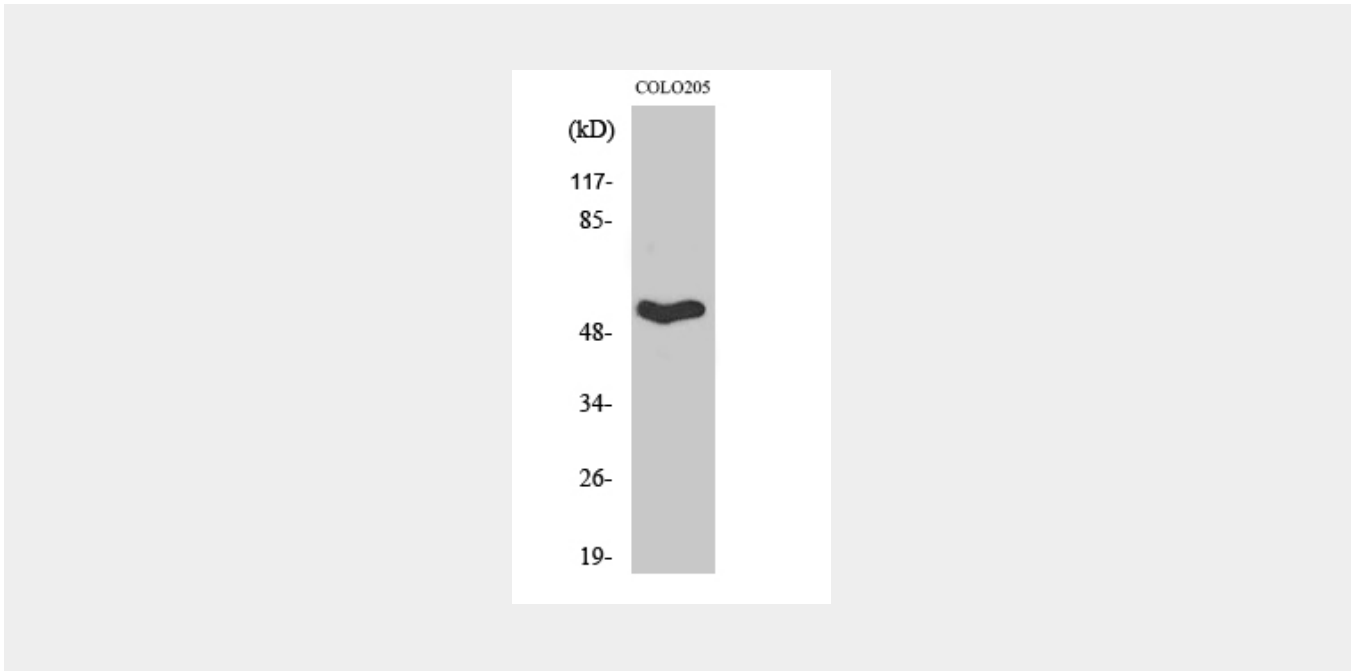
Expressed at high levels in lymphoid and hematopoietic tissues.

Septin 1 Polyclonal Antibody - Protocols

Provided below are standard protocols that you may find useful for product applications.

- [Western Blot](#)
- [Blocking Peptides](#)
- [Dot Blot](#)
- [Immunohistochemistry](#)
- [Immunofluorescence](#)
- [Immunoprecipitation](#)
- [Flow Cytometry](#)
- [Cell Culture](#)

Septin 1 Polyclonal Antibody - Images



Septin 1 Polyclonal Antibody - Background

Filament-forming cytoskeletal GTPase (By similarity). May play a role in cytokinesis (Potential).