

SENP8 Polyclonal Antibody
Catalog # AP72425**Specification**

SENP8 Polyclonal Antibody - Product Information

Application	WB
Primary Accession	Q96LD8
Reactivity	Human, Mouse, Rat
Host	Rabbit
Clonality	Polyclonal

SENP8 Polyclonal Antibody - Additional Information**Gene ID** 123228**Other Names**

SENP8; DEN1; NEDP1; PRSC2; FKSG8; Sentrin-specific protease 8; Denedylase-1; NEDD8-specific protease 1; Protease; cysteine 2; Sentrin/SUMO-specific protease SENP8

Dilution

WB~~Western Blot: 1/500 - 1/2000. Immunohistochemistry: 1/100 - 1/300. ELISA: 1/10000. Not yet tested in other applications.

Format

Liquid in PBS containing 50% glycerol, 0.5% BSA and 0.09% (W/V) sodium azide.

Storage Conditions

-20°C

SENP8 Polyclonal Antibody - Protein Information**Name** SENP8**Synonyms** DEN1, NEDP1, PRSC2**Function**

Protease that catalyzes two essential functions in the NEDD8 pathway: processing of full-length NEDD8 to its mature form and deconjugation of NEDD8 from targeted proteins such as cullins or p53.

Tissue Location

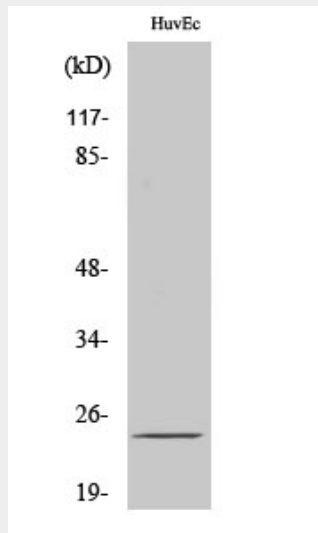
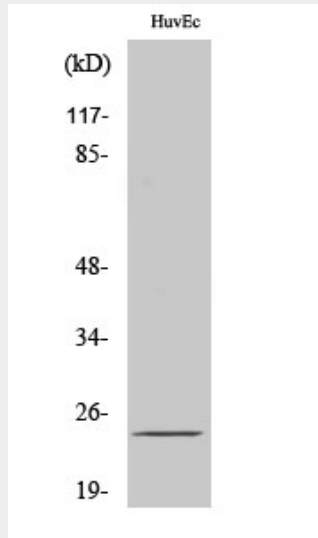
Broadly expressed, with highest levels in kidney and pancreas.

SENP8 Polyclonal Antibody - Protocols

Provided below are standard protocols that you may find useful for product applications.

- [Western Blot](#)
- [Blocking Peptides](#)
- [Dot Blot](#)
- [Immunohistochemistry](#)
- [Immunofluorescence](#)
- [Immunoprecipitation](#)
- [Flow Cytometry](#)
- [Cell Culture](#)

SENP8 Polyclonal Antibody - Images



SENP8 Polyclonal Antibody - Background

Protease that catalyzes two essential functions in the NEDD8 pathway: processing of full-length NEDD8 to its mature form and deconjugation of NEDD8 from targeted proteins such as cullins or p53.