

**SCFD1 Polyclonal Antibody**  
Catalog # AP72404**Specification**

---

**SCFD1 Polyclonal Antibody - Product Information**

Application	<b>WB</b>
Primary Accession	<a href="#">Q8WVM8</a>
Reactivity	<b>Human, Mouse, Rat</b>
Host	<b>Rabbit</b>
Clonality	<b>Polyclonal</b>

**SCFD1 Polyclonal Antibody - Additional Information****Gene ID** 23256**Other Names**

SCFD1; C14orf163; KIAA0917; STXBP1L2; FKSG23; Sec1 family domain-containing protein 1; SLY1 homolog; Sly1p; Syntaxin-binding protein 1-like 2

**Dilution**

WB~~Western Blot: 1/500 - 1/2000. ELISA: 1/10000. Not yet tested in other applications.

**Format**

Liquid in PBS containing 50% glycerol, 0.5% BSA and 0.09% (W/V) sodium azide.

**Storage Conditions**

-20°C

**SCFD1 Polyclonal Antibody - Protein Information****Name** SCFD1**Synonyms** C14orf163, KIAA0917, STXBP1L2**Function**

Plays a role in SNARE-pin assembly and Golgi-to-ER retrograde transport via its interaction with COG4. Involved in vesicular transport between the endoplasmic reticulum and the Golgi (By similarity).

**Cellular Location**

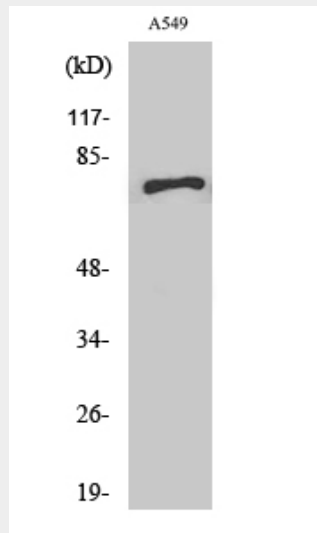
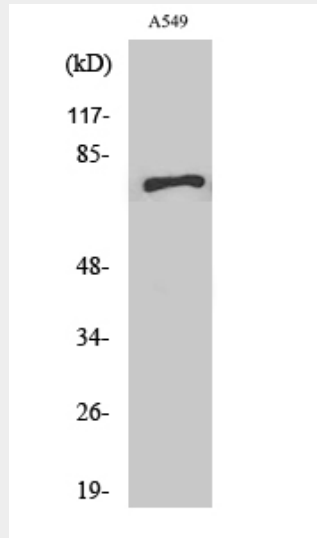
Cytoplasm. Endoplasmic reticulum membrane; Peripheral membrane protein Golgi apparatus, Golgi stack membrane; Peripheral membrane protein

**SCFD1 Polyclonal Antibody - Protocols**

Provided below are standard protocols that you may find useful for product applications.

- [Western Blot](#)
- [Blocking Peptides](#)
- [Dot Blot](#)
- [Immunohistochemistry](#)
- [Immunofluorescence](#)
- [Immunoprecipitation](#)
- [Flow Cytometry](#)
- [Cell Culture](#)

### SCFD1 Polyclonal Antibody - Images



### SCFD1 Polyclonal Antibody - Background

Plays a role in SNARE-pin assembly and Golgi-to-ER retrograde transport via its interaction with COG4. Involved in vesicular transport between the endoplasmic reticulum and the Golgi (By similarity).