

**SAE1 Polyclonal Antibody**  
Catalog # AP72390**Specification**

---

**SAE1 Polyclonal Antibody - Product Information**

Application	WB
Primary Accession	<a href="#">Q9UBE0</a>
Reactivity	Human, Mouse, Rat
Host	Rabbit
Clonality	Polyclonal

**SAE1 Polyclonal Antibody - Additional Information****Gene ID** 10055**Other Names**

SAE1; AOS1; SUA1; UBLE1A; SUMO-activating enzyme subunit 1; Ubiquitin-like 1-activating enzyme E1A

**Dilution**

WB~~Western Blot: 1/500 - 1/2000. Immunohistochemistry: 1/100 - 1/300. Immunofluorescence: 1/200 - 1/1000. ELISA: 1/20000. Not yet tested in other applications.

**Format**

Liquid in PBS containing 50% glycerol, 0.5% BSA and 0.09% (W/V) sodium azide.

**Storage Conditions**

-20°C

**SAE1 Polyclonal Antibody - Protein Information****Name** SAE1**Synonyms** AOS1, SUA1, UBLE1A**Function**

The heterodimer acts as an E1 ligase for SUMO1, SUMO2, SUMO3, and probably SUMO4. It mediates ATP-dependent activation of SUMO proteins followed by formation of a thioester bond between a SUMO protein and a conserved active site cysteine residue on UBA2/SAE2.

**Cellular Location**

Nucleus.

**Tissue Location**

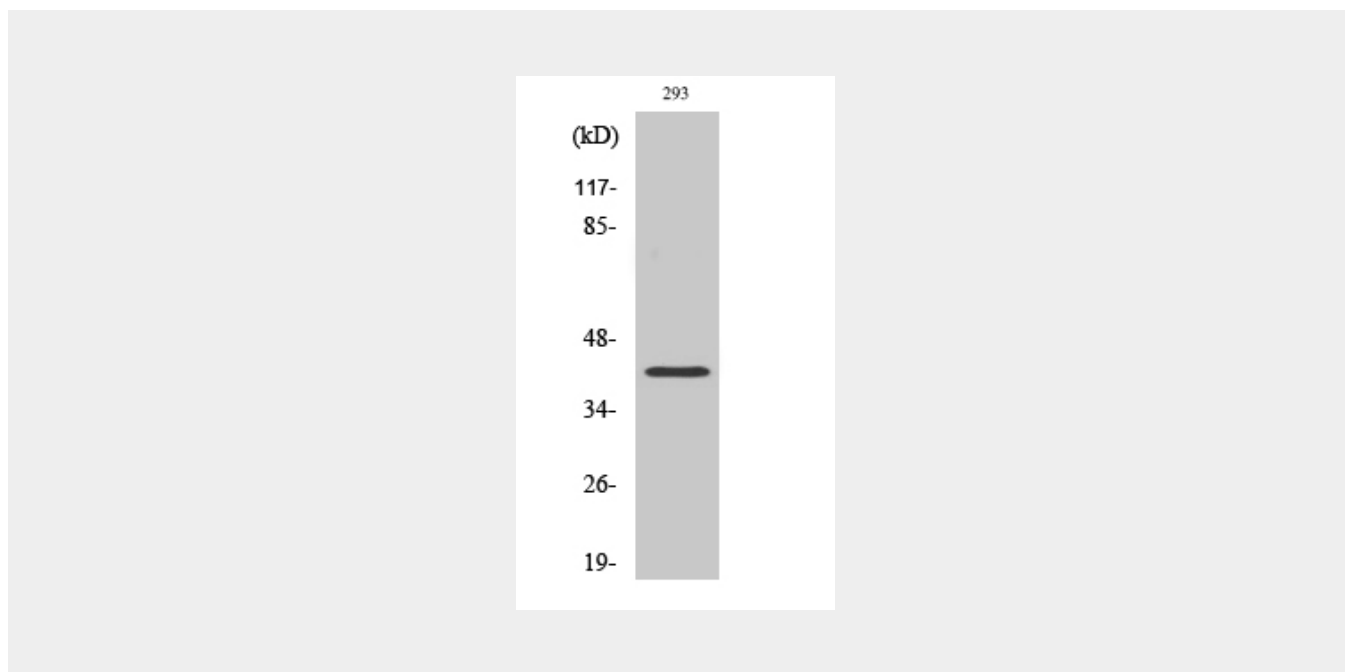
Expression level increases during S phase and drops in G2 phase (at protein level).

## SAE1 Polyclonal Antibody - Protocols

Provided below are standard protocols that you may find useful for product applications.

- [Western Blot](#)
- [Blocking Peptides](#)
- [Dot Blot](#)
- [Immunohistochemistry](#)
- [Immunofluorescence](#)
- [Immunoprecipitation](#)
- [Flow Cytometry](#)
- [Cell Culture](#)

## SAE1 Polyclonal Antibody - Images



## SAE1 Polyclonal Antibody - Background

The heterodimer acts as an E1 ligase for SUMO1, SUMO2, SUMO3, and probably SUMO4. It mediates ATP-dependent activation of SUMO proteins followed by formation of a thioester bond between a SUMO protein and a conserved active site cysteine residue on UBA2/SAE2.