

**Ribosomal Protein L28 Polyclonal Antibody**  
Catalog # AP72287**Specification****Ribosomal Protein L28 Polyclonal Antibody - Product Information**

Application	WB
Primary Accession	<a href="#">P46779</a>
Reactivity	Human, Mouse, Rat
Host	Rabbit
Clonality	Polyclonal

**Ribosomal Protein L28 Polyclonal Antibody - Additional Information****Gene ID** 6158**Other Names**

RPL28; 60S ribosomal protein L28

**Dilution**

WB~~Western Blot: 1/500 - 1/2000. Immunohistochemistry: 1/100 - 1/300. ELISA: 1/20000. Not yet tested in other applications.

**Format**

Liquid in PBS containing 50% glycerol, 0.5% BSA and 0.09% (W/V) sodium azide.

**Storage Conditions**

-20°C

**Ribosomal Protein L28 Polyclonal Antibody - Protein Information****Name** RPL28**Function**

Component of the large ribosomal subunit (PubMed: [12962325](http://www.uniprot.org/citations/12962325), PubMed: [23636399](http://www.uniprot.org/citations/23636399), PubMed: [32669547](http://www.uniprot.org/citations/32669547)). The ribosome is a large ribonucleoprotein complex responsible for the synthesis of proteins in the cell (PubMed: [12962325](http://www.uniprot.org/citations/12962325), PubMed: [23636399](http://www.uniprot.org/citations/23636399), PubMed: [32669547](http://www.uniprot.org/citations/32669547)).

**Cellular Location**

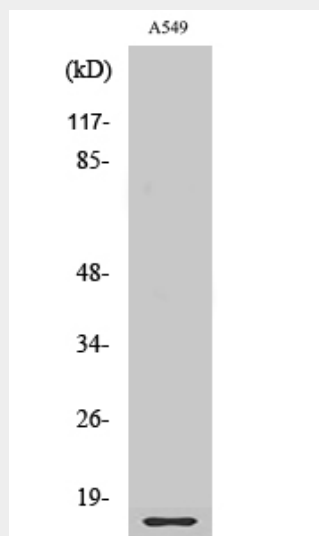
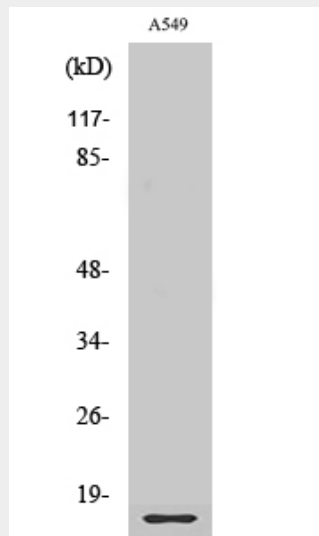
Cytoplasm.

**Ribosomal Protein L28 Polyclonal Antibody - Protocols**

Provided below are standard protocols that you may find useful for product applications.

- [Western Blot](#)
- [Blocking Peptides](#)
- [Dot Blot](#)
- [Immunohistochemistry](#)
- [Immunofluorescence](#)
- [Immunoprecipitation](#)
- [Flow Cytometry](#)
- [Cell Culture](#)

### Ribosomal Protein L28 Polyclonal Antibody - Images



### Ribosomal Protein L28 Polyclonal Antibody - Background

Component of the large ribosomal subunit.