

Ribosomal Protein L17 Polyclonal Antibody
Catalog # AP72281**Specification****Ribosomal Protein L17 Polyclonal Antibody - Product Information**

Application	WB
Primary Accession	P18621
Reactivity	Human, Mouse, Rat, Monkey
Host	Rabbit
Clonality	Polyclonal

Ribosomal Protein L17 Polyclonal Antibody - Additional Information**Gene ID** 6139**Other Names**

RPL17; 60S ribosomal protein L17; 60S ribosomal protein L23; PD-1

Dilution

WB~~Western Blot: 1/500 - 1/2000. Immunohistochemistry: 1/100 - 1/300. ELISA: 1/10000. Not yet tested in other applications.

Format

Liquid in PBS containing 50% glycerol, 0.5% BSA and 0.09% (W/V) sodium azide.

Storage Conditions

-20°C

Ribosomal Protein L17 Polyclonal Antibody - Protein Information**Name** RPL17**Function**

Component of the large ribosomal subunit (PubMed: [12962325](http://www.uniprot.org/citations/12962325), PubMed: [23636399](http://www.uniprot.org/citations/23636399), PubMed: [32669547](http://www.uniprot.org/citations/32669547)). The ribosome is a large ribonucleoprotein complex responsible for the synthesis of proteins in the cell (PubMed: [12962325](http://www.uniprot.org/citations/12962325), PubMed: [23636399](http://www.uniprot.org/citations/23636399), PubMed: [32669547](http://www.uniprot.org/citations/32669547)).

Cellular Location

Cytoplasm.

Tissue Location

Expressed in pancreas, lung, colon, cystic duct, gall bladder, kidney and liver. Expressed at high levels in the well differentiated pancreatic tumor cell lines HPAF, COLO 357 and Capan-1, the

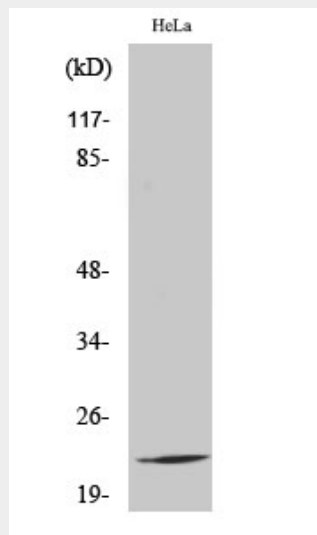
moderately differentiated pancreatic tumor cell lines T3M-4, AsPc-1 and BxPc-3, the poorly differentiated pancreatic tumor cell line MIA PaCa-2, and the pancreatic tumor cell lines of undefined differentiation status such as SW979. Expressed at lower levels in the poorly differentiated pancreatic tumor cell lines HCG-25 and PANC-1

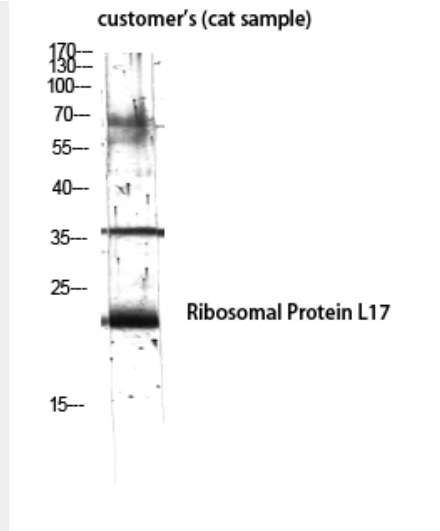
Ribosomal Protein L17 Polyclonal Antibody - Protocols

Provided below are standard protocols that you may find useful for product applications.

- [Western Blot](#)
- [Blocking Peptides](#)
- [Dot Blot](#)
- [Immunohistochemistry](#)
- [Immunofluorescence](#)
- [Immunoprecipitation](#)
- [Flow Cytometry](#)
- [Cell Culture](#)

Ribosomal Protein L17 Polyclonal Antibody - Images





Ribosomal Protein L17 Polyclonal Antibody - Background

Component of the large ribosomal subunit.