

**Reg IV Polyclonal Antibody**  
Catalog # AP72223**Specification**

---

**Reg IV Polyclonal Antibody - Product Information**

Application	IHC
Primary Accession	<a href="#">Q9BYZ8</a>
Reactivity	Human
Host	Rabbit
Clonality	Polyclonal

**Reg IV Polyclonal Antibody - Additional Information****Gene ID** 83998**Other Names**

REG4; GISP; RELP; Regenerating islet-derived protein 4; REG-4; Gastrointestinal secretory protein; REG-like protein; Regenerating islet-derived protein IV; Reg IV

**Dilution**

IHC~~Immunohistochemistry: 1/100 - 1/300. ELISA: 1/40000. Not yet tested in other applications.

**Format**

Liquid in PBS containing 50% glycerol, 0.5% BSA and 0.09% (W/V) sodium azide.

**Storage Conditions**

-20°C

**Reg IV Polyclonal Antibody - Protein Information****Name** REG4**Synonyms** GISP, RELP**Function**

Calcium-independent lectin displaying mannose-binding specificity and able to maintain carbohydrate recognition activity in an acidic environment. May be involved in inflammatory and metaplastic responses of the gastrointestinal epithelium.

**Cellular Location**

Secreted.

**Tissue Location**

Highly expressed in the gastrointestinal tract including the duodenum, jejunum, ileum, ileocecum, appendix, descending colon, pancreas and small intestine. Weakly expressed in normal colon and stomach. Strongly expressed in most colorectal tumors than in normal colon. Preferentially expressed in mucinous tumors and in some cases neuro-endocrine tumors. Expressed in mucus-secreting cells and enterocyte-like cells. In small intestine expressed at the basal

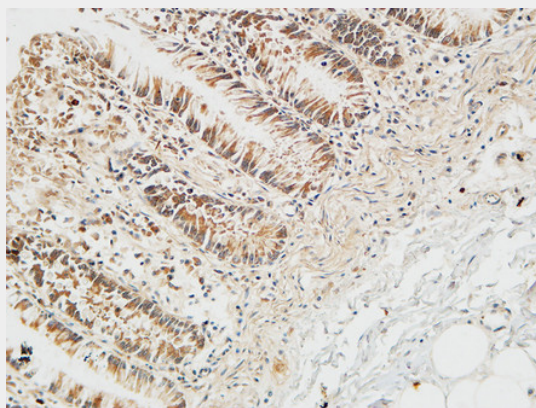
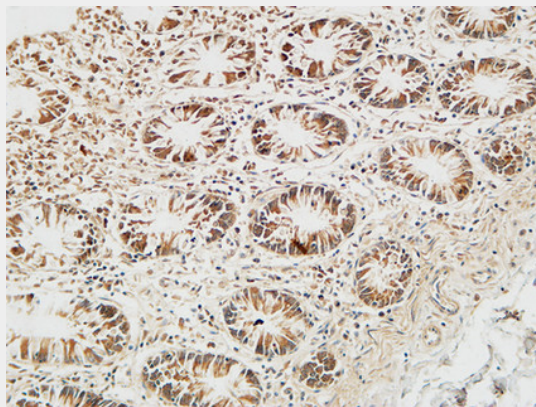
perinuclear zone of goblet cells.

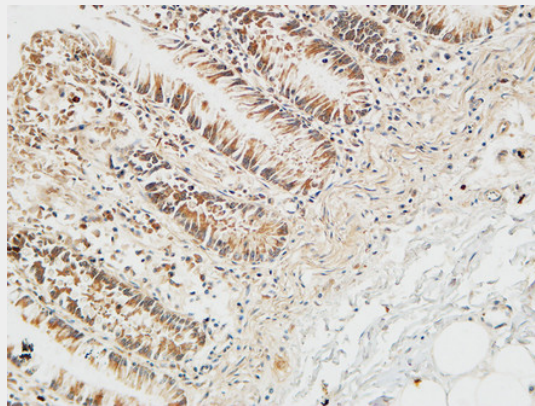
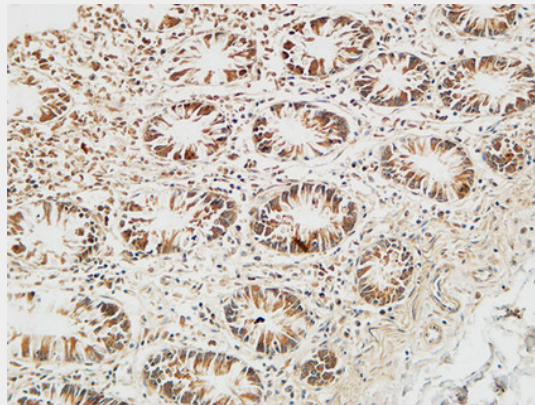
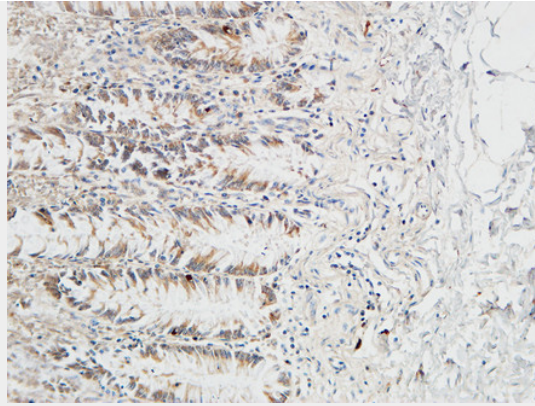
#### Reg IV Polyclonal Antibody - Protocols

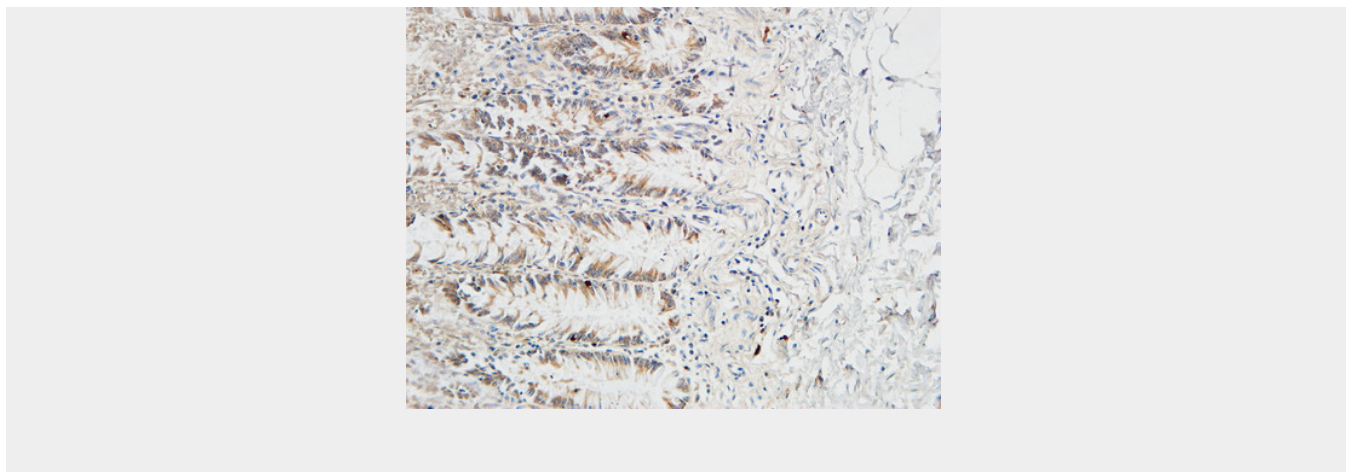
Provided below are standard protocols that you may find useful for product applications.

- [Western Blot](#)
- [Blocking Peptides](#)
- [Dot Blot](#)
- [Immunohistochemistry](#)
- [Immunofluorescence](#)
- [Immunoprecipitation](#)
- [Flow Cytometry](#)
- [Cell Culture](#)

#### Reg IV Polyclonal Antibody - Images







#### **Reg IV Polyclonal Antibody - Background**

Calcium-independent lectin displaying mannose-binding specificity and able to maintain carbohydrate recognition activity in an acidic environment. May be involved in inflammatory and metaplastic responses of the gastrointestinal epithelium.