

RCL1 Polyclonal Antibody
Catalog # AP72216**Specification**

RCL1 Polyclonal Antibody - Product Information

| | |
|-------------------|------------------------|
| Application | WB |
| Primary Accession | Q9Y2P8 |
| Reactivity | Human, Mouse, Rat |
| Host | Rabbit |
| Clonality | Polyclonal |

RCL1 Polyclonal Antibody - Additional Information**Gene ID** 10171**Other Names**

RCL1; RNAC; RPC2; RPCL1; RTC2; HSPC338; RNA 3'-terminal phosphate cyclase-like protein

Dilution

WB~~Western Blot: 1/500 - 1/2000. ELISA: 1/40000. Not yet tested in other applications.

Format

Liquid in PBS containing 50% glycerol, 0.5% BSA and 0.09% (W/V) sodium azide.

Storage Conditions

-20°C

RCL1 Polyclonal Antibody - Protein Information**Name** RCL1 ([HGNC:17687](#))**Synonyms** RNAC, RPC2, RPCL1, RTC2**Function**

Part of the small subunit (SSU) processome, first precursor of the small eukaryotic ribosomal subunit. During the assembly of the SSU processome in the nucleolus, many ribosome biogenesis factors, an RNA chaperone and ribosomal proteins associate with the nascent pre- rRNA and work in concert to generate RNA folding, modifications, rearrangements and cleavage as well as targeted degradation of pre- ribosomal RNA by the RNA exosome (PubMed:34516797). Does not have cyclase activity (By similarity).

Cellular Location

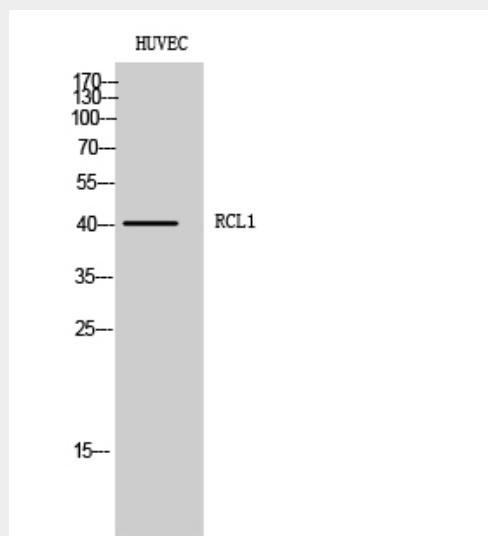
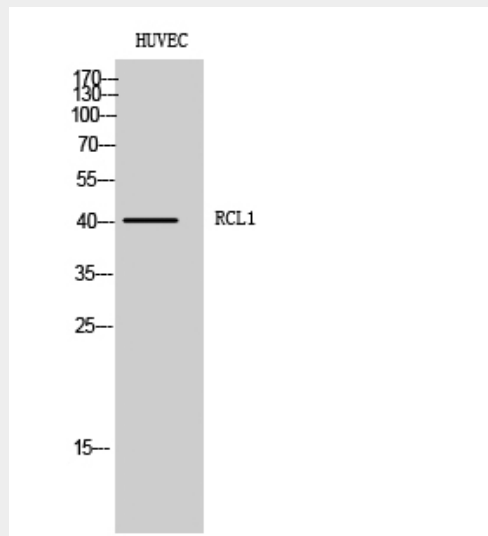
Nucleus, nucleolus.

RCL1 Polyclonal Antibody - Protocols

Provided below are standard protocols that you may find useful for product applications.

- [Western Blot](#)
- [Blocking Peptides](#)
- [Dot Blot](#)
- [Immunohistochemistry](#)
- [Immunofluorescence](#)
- [Immunoprecipitation](#)
- [Flow Cytometry](#)
- [Cell Culture](#)

RCL1 Polyclonal Antibody - Images



RCL1 Polyclonal Antibody - Background

Does not have cyclase activity. Plays a role in 40S- ribosomal-subunit biogenesis in the early pre-rRNA processing steps at sites A0, A1 and A2 that are required for proper maturation of the 18S RNA (By similarity).