

**RAGE Polyclonal Antibody**  
Catalog # AP72177**Specification**

---

**RAGE Polyclonal Antibody - Product Information**

Application	<b>WB</b>
Primary Accession	<a href="#">Q9UQ07</a>
Reactivity	<b>Human</b>
Host	<b>Rabbit</b>
Clonality	<b>Polyclonal</b>

**RAGE Polyclonal Antibody - Additional Information****Gene ID** 5891**Other Names**

MOK; RAGE; RAGE1; MAPK/MAK/MRK overlapping kinase; MOK protein kinase; Renal tumor antigen 1; RAGE-1

**Dilution**

WB~~Western Blot: 1/500 - 1/2000. Immunohistochemistry: 1/100 - 1/300. Immunofluorescence: 1/200 - 1/1000. ELISA: 1/5000. Not yet tested in other applications.

**Format**

Liquid in PBS containing 50% glycerol, 0.5% BSA and 0.09% (W/V) sodium azide.

**Storage Conditions**

-20°C

**RAGE Polyclonal Antibody - Protein Information****Name** MOK**Synonyms** RAGE, RAGE1**Function**

Able to phosphorylate several exogenous substrates and to undergo autophosphorylation. Negatively regulates cilium length in a cAMP and mTORC1 signaling-dependent manner.

**Cellular Location**

Cytoplasm {ECO:0000250|UniProtKB:Q9WVS4}. Cell projection, cilium {ECO:0000250|UniProtKB:Q9WVS4}. Nucleus {ECO:0000250|UniProtKB:Q9WVS4}

**Tissue Location**

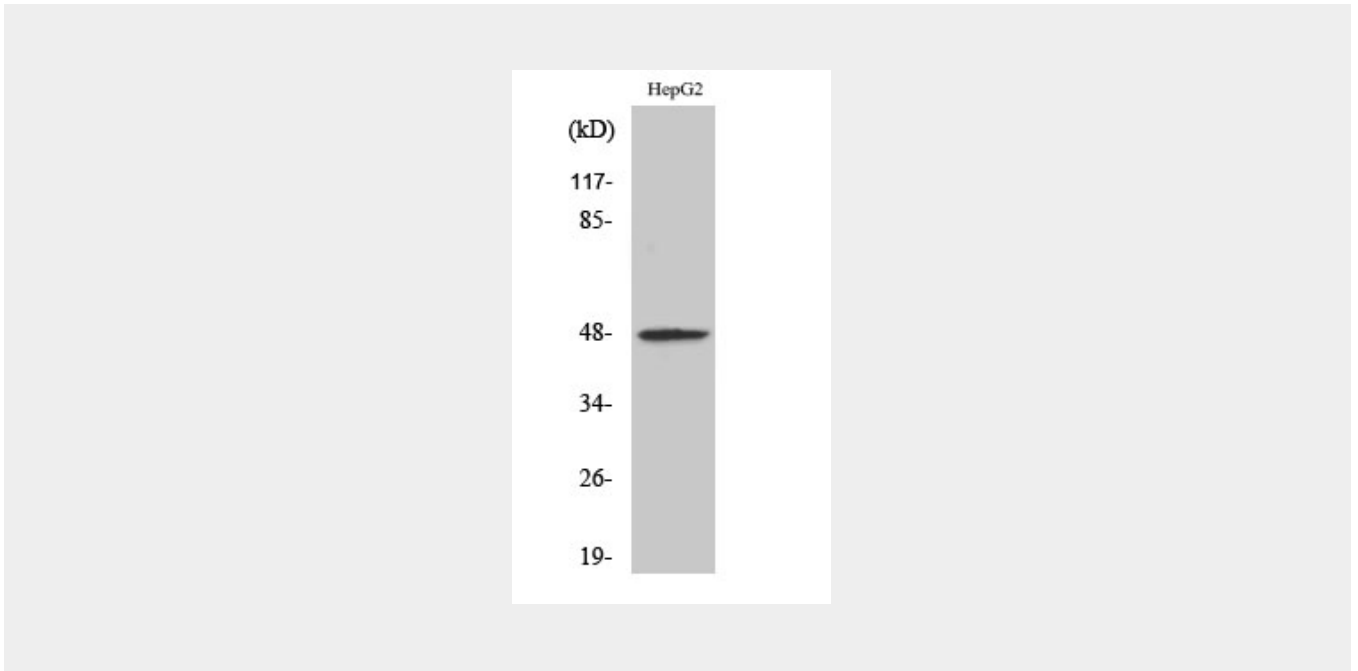
Expressed in heart, brain, lung, kidney, and pancreas, and at very low levels in placenta, liver and skeletal muscle. Detected in retina

## RAGE Polyclonal Antibody - Protocols

Provided below are standard protocols that you may find useful for product applications.

- [Western Blot](#)
- [Blocking Peptides](#)
- [Dot Blot](#)
- [Immunohistochemistry](#)
- [Immunofluorescence](#)
- [Immunoprecipitation](#)
- [Flow Cytometry](#)
- [Cell Culture](#)

## RAGE Polyclonal Antibody - Images



## RAGE Polyclonal Antibody - Background

Able to phosphorylate several exogenous substrates and to undergo autophosphorylation. Negatively regulates cilium length in a cAMP and mTORC1 signaling-dependent manner.