

**Raftlin Polyclonal Antibody**  
Catalog # AP72172**Specification****Raftlin Polyclonal Antibody - Product Information**

Application	<b>WB</b>
Primary Accession	<a href="#">Q14699</a>
Reactivity	<b>Human</b>
Host	<b>Rabbit</b>
Clonality	<b>Polyclonal</b>

**Raftlin Polyclonal Antibody - Additional Information****Gene ID** 23180**Other Names**

RFTN1; KIAA0084; MIG2; Raftlin; Cell migration-inducing gene 2 protein; Raft-linking protein

**Dilution**

WB~~Western Blot: 1/500 - 1/2000. ELISA: 1/20000. Not yet tested in other applications.

**Format**

Liquid in PBS containing 50% glycerol, 0.5% BSA and 0.09% (W/V) sodium azide.

**Storage Conditions**

-20°C

**Raftlin Polyclonal Antibody - Protein Information****Name** RFTN1**Synonyms** KIAA0084**Function**

Involved in protein trafficking via association with clathrin and AP2 complex (PubMed: [21266579](http://www.uniprot.org/citations/21266579), PubMed: [27022195](http://www.uniprot.org/citations/27022195)). Upon bacterial lipopolysaccharide stimulation, mediates internalization of TLR4 to endosomes in dendritic cells and macrophages; and internalization of poly(I:C) to TLR3-positive endosomes in myeloid dendritic cells and epithelial cells; resulting in activation of TICAM1-mediated signaling and subsequent IFNB1 production (PubMed: [21266579](http://www.uniprot.org/citations/21266579), PubMed: [27022195](http://www.uniprot.org/citations/27022195)). Involved in T-cell antigen receptor-mediated signaling by regulating tyrosine kinase LCK localization, T-cell dependent antibody production and cytokine secretion (By similarity). May regulate B-cell antigen receptor-mediated signaling (PubMed: [12805216](http://www.uniprot.org/citations/12805216)). May play a pivotal role in the formation and/or maintenance of lipid rafts (PubMed: [12805216](http://www.uniprot.org/citations/12805216)).

### Cellular Location

Cell membrane; Lipid-anchor. Cytoplasm. Membrane raft. Endosome. Early endosome.  
Note=Translocates from cytoplasm to cell membrane where it colocalizes with poly (I:C) and then moves to endosomes where it colocalizes with TLR3 (PubMed:21266579) Translocates from cytoplasm to cell membrane where it colocalizes with TLR4 and then together with TLR4 moves to endosomes, upon lipopolysaccharide stimulation (PubMed:27022195)

### Tissue Location

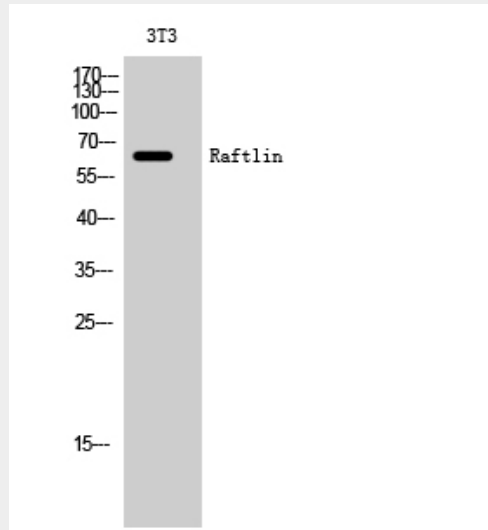
Expressed in B-cells (at protein level) (PubMed:12805216). Expressed in dendritic cells and macrophages (PubMed:21266579, PubMed:27022195).

## Raftlin Polyclonal Antibody - Protocols

Provided below are standard protocols that you may find useful for product applications.

- [Western Blot](#)
- [Blocking Peptides](#)
- [Dot Blot](#)
- [Immunohistochemistry](#)
- [Immunofluorescence](#)
- [Immunoprecipitation](#)
- [Flow Cytometry](#)
- [Cell Culture](#)

## Raftlin Polyclonal Antibody - Images



## Raftlin Polyclonal Antibody - Background

Involved in protein trafficking via association with clathrin and AP2 complex (PubMed:27022195, PubMed:21266579). Upon bacterial lipopolysaccharide stimulation, mediates internalization of TLR4 to endosomes in dendritic cells and macrophages; and internalization of poly(I:C) to TLR3-positive endosomes in myeloid dendritic cells and epithelial cells; resulting in activation of TICAM1-mediated signaling and subsequent IFNB1 production (PubMed:27022195, PubMed:21266579). Involved in T-cell antigen receptor-mediated signaling by regulating tyrosine kinase LCK localization, T-cell dependent antibody production and cytokine secretion (By similarity). May regulate B-cell antigen

receptor- mediated signaling (PubMed:12805216). May play a pivotal role in the formation and/or maintenance of lipid rafts (PubMed:12805216).