

**Rad52 Polyclonal Antibody**  
Catalog # AP72152**Specification**

---

**Rad52 Polyclonal Antibody - Product Information**

Application	WB
Primary Accession	<a href="#">P43351</a>
Reactivity	Human, Mouse
Host	Rabbit
Clonality	Polyclonal

**Rad52 Polyclonal Antibody - Additional Information****Gene ID** 5893**Other Names**

RAD52; DNA repair protein RAD52 homolog

**Dilution**

WB~~Western Blot: 1/500 - 1/2000. Immunohistochemistry: 1/100 - 1/300. Immunofluorescence: 1/200 - 1/1000. ELISA: 1/10000. Not yet tested in other applications.

**Format**

Liquid in PBS containing 50% glycerol, 0.5% BSA and 0.09% (W/V) sodium azide.

**Storage Conditions**

-20°C

**Rad52 Polyclonal Antibody - Protein Information****Name** RAD52**Function**

Involved in double-stranded break repair. Plays a central role in genetic recombination and DNA repair by promoting the annealing of complementary single-stranded DNA and by stimulation of the RAD51 recombinase.

**Cellular Location**

Nucleus.

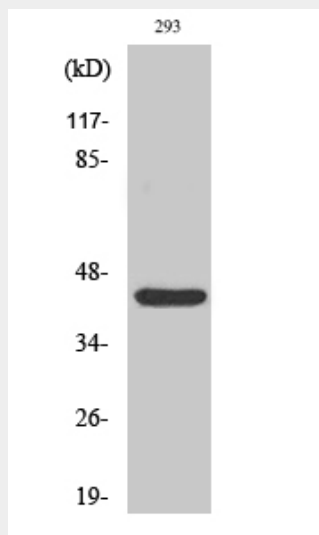
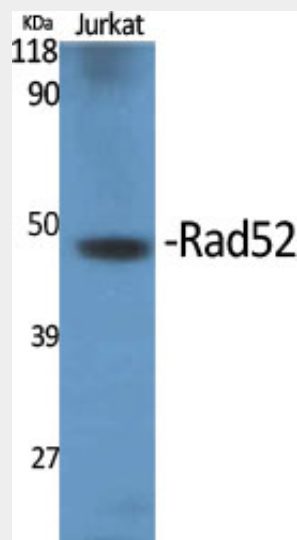
**Rad52 Polyclonal Antibody - Protocols**

Provided below are standard protocols that you may find useful for product applications.

- [Western Blot](#)
- [Blocking Peptides](#)

- [Dot Blot](#)
- [Immunohistochemistry](#)
- [Immunofluorescence](#)
- [Immunoprecipitation](#)
- [Flow Cytometry](#)
- [Cell Culture](#)

### Rad52 Polyclonal Antibody - Images



### Rad52 Polyclonal Antibody - Background

Involved in double-stranded break repair. Plays a central role in genetic recombination and DNA repair by promoting the annealing of complementary single-stranded DNA and by stimulation of the RAD51 recombinase.