

Rab 6A Polyclonal Antibody
Catalog # AP72120**Specification**

Rab 6A Polyclonal Antibody - Product Information

Application	WB
Primary Accession	P20340
Reactivity	Human, Mouse, Rat
Host	Rabbit
Clonality	Polyclonal

Rab 6A Polyclonal Antibody - Additional Information**Gene ID** 5870**Other Names**

RAB6A; RAB6; Ras-related protein Rab-6A; Rab-6

Dilution

WB~~Western Blot: 1/500 - 1/2000. Immunohistochemistry: 1/100 - 1/300. ELISA: 1/20000. Not yet tested in other applications.

Format

Liquid in PBS containing 50% glycerol, 0.5% BSA and 0.09% (W/V) sodium azide.

Storage Conditions

-20°C

Rab 6A Polyclonal Antibody - Protein Information**Name** RAB6A**Synonyms** RAB6**Function**

Regulator of COPI-independent retrograde transport from the Golgi apparatus towards the endoplasmic reticulum (ER) (PubMed:<<http://www.uniprot.org/citations/25962623>>25962623). Has a low GTPase activity (PubMed:<<http://www.uniprot.org/citations/25962623>>25962623). Recruits VPS13B to the Golgi membrane (PubMed:<<http://www.uniprot.org/citations/25492866>>25492866). Plays a role in neuron projection development (Probable).

Cellular Location

Golgi apparatus membrane; Lipid- anchor. Cytoplasmic vesicle, secretory vesicle, acrosome membrane {ECO:0000250|UniProtKB:P35279}; Peripheral membrane protein. Note=BICD2 facilitates its targeting to Golgi apparatus membrane. [Isoform 2]: Golgi apparatus membrane; Lipid-anchor

Tissue Location

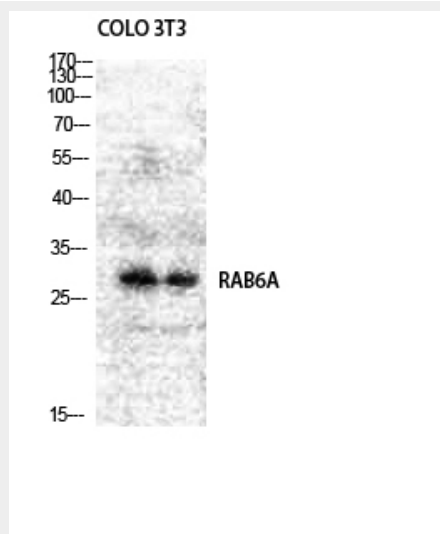
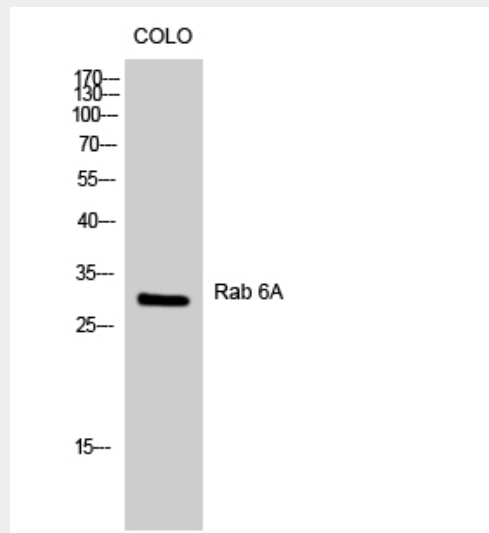
Ubiquitous..

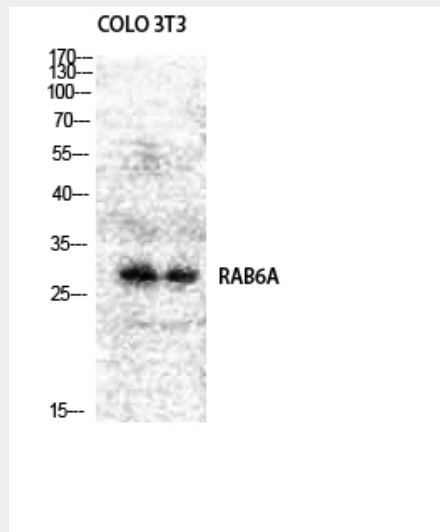
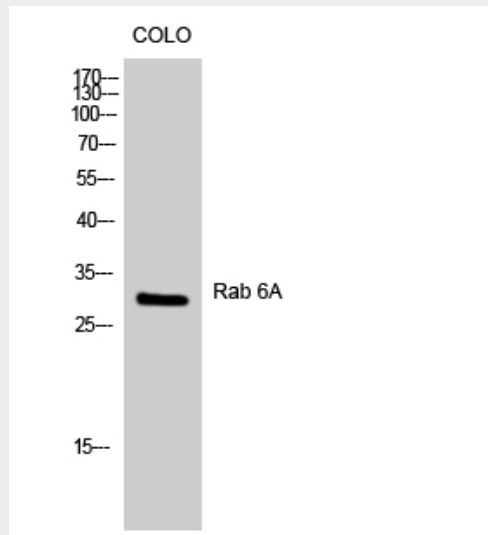
Rab 6A Polyclonal Antibody - Protocols

Provided below are standard protocols that you may find useful for product applications.

- [Western Blot](#)
- [Blocking Peptides](#)
- [Dot Blot](#)
- [Immunohistochemistry](#)
- [Immunofluorescence](#)
- [Immunoprecipitation](#)
- [Flow Cytometry](#)
- [Cell Culture](#)

Rab 6A Polyclonal Antibody - Images





Rab 6A Polyclonal Antibody - Background

Protein transport. Regulator of membrane traffic from the Golgi apparatus towards the endoplasmic reticulum (ER). Has a low GTPase activity. Involved in COPI-independent retrograde transport from the Golgi to the ER (PubMed:25962623).