

Rab 2A Polyclonal Antibody
Catalog # AP72107**Specification**

Rab 2A Polyclonal Antibody - Product Information

Application	WB
Primary Accession	P61019
Reactivity	Human, Mouse, Rat
Host	Rabbit
Clonality	Polyclonal

Rab 2A Polyclonal Antibody - Additional Information**Gene ID** 5862**Other Names**

RAB2A; RAB2; Ras-related protein Rab-2A

Dilution

WB~~Western Blot: 1/500 - 1/2000. Immunohistochemistry: 1/100 - 1/300. ELISA: 1/20000. Not yet tested in other applications.

Format

Liquid in PBS containing 50% glycerol, 0.5% BSA and 0.09% (W/V) sodium azide.

Storage Conditions

-20°C

Rab 2A Polyclonal Antibody - Protein Information**Name** RAB2A ([HGNC:9763](#))**Synonyms** RAB2**Function**

The small GTPases Rab are key regulators of intracellular membrane trafficking, from the formation of transport vesicles to their fusion with membranes. Rabs cycle between active GTP-bound and inactive GDP-bound states. In their active state, drive transport of vesicular carriers from donor organelles to acceptor organelles to regulate the membrane traffic that maintains organelle identity and morphology. Required for protein transport from the endoplasmic reticulum to the Golgi complex. Regulates the compacted morphology of the Golgi (Probable). Together with RAB2B redundantly required for efficient autophagic flux (PubMed:28483915).

Cellular Location

Endoplasmic reticulum-Golgi intermediate compartment membrane; Lipid-anchor; Cytoplasmic side Melanosome. Endoplasmic reticulum membrane; Lipid-anchor; Cytoplasmic side. Golgi apparatus membrane; Lipid-anchor; Cytoplasmic side. Cytoplasmic vesicle, secretory vesicle,

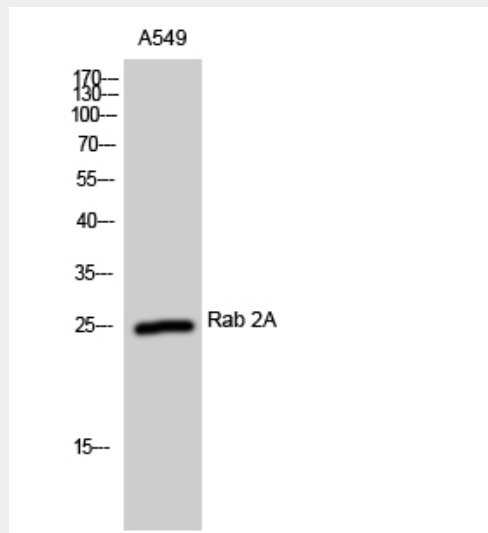
acrosome {ECO:0000250|UniProtKB:P53994}. Cytoplasmic vesicle, autophagosome membrane {ECO:0000250|UniProtKB:P53994}; Lipid-anchor; Cytoplasmic side Note=Localized in the Golgi apparatus in the round spermatids and in the acrosome in the elongating spermatid (By similarity). Identified by mass spectrometry in melanosome fractions from stage I to stage IV (PubMed:17081065). {ECO:0000250|UniProtKB:P53994, ECO:0000269|PubMed:17081065}

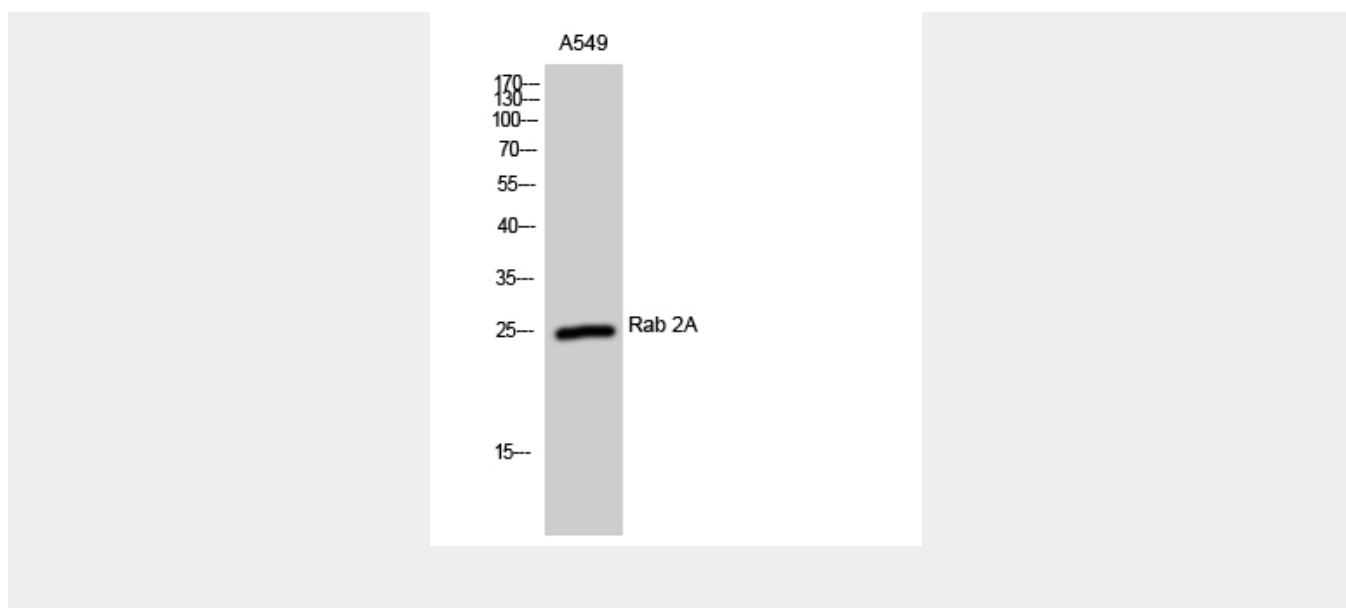
Rab 2A Polyclonal Antibody - Protocols

Provided below are standard protocols that you may find useful for product applications.

- [Western Blot](#)
- [Blocking Peptides](#)
- [Dot Blot](#)
- [Immunohistochemistry](#)
- [Immunofluorescence](#)
- [Immunoprecipitation](#)
- [Flow Cytometry](#)
- [Cell Culture](#)

Rab 2A Polyclonal Antibody - Images





Rab 2A Polyclonal Antibody - Background

Required for protein transport from the endoplasmic reticulum to the Golgi complex.