

Rab 20 Polyclonal Antibody
Catalog # AP72105**Specification**

Rab 20 Polyclonal Antibody - Product Information

Application	WB
Primary Accession	Q9NX57
Reactivity	Human
Host	Rabbit
Clonality	Polyclonal

Rab 20 Polyclonal Antibody - Additional Information**Gene ID** 55647**Other Names**

RAB20; Ras-related protein Rab-20

Dilution

WB~~Western Blot: 1/500 - 1/2000. Immunohistochemistry: 1/100 - 1/300. ELISA: 1/10000. Not yet tested in other applications.

Format

Liquid in PBS containing 50% glycerol, 0.5% BSA and 0.09% (W/V) sodium azide.

Storage Conditions

-20°C

Rab 20 Polyclonal Antibody - Protein Information**Name** RAB20**Function**

Plays a role in apical endocytosis/recycling. Plays a role in the maturation and acidification of phagosomes that engulf pathogens, such as S.aureus and M.tuberculosis. Plays a role in the fusion of phagosomes with lysosomes.

Cellular Location

Golgi apparatus. Cytoplasmic vesicle, phagosome Cytoplasmic vesicle, phagosome membrane; Lipid-anchor; Cytoplasmic side. Note=Highly enriched on apical endocytic structures in polarized epithelial cells of kidney proximal tubules (By similarity). Recruited to phagosomes containing S.aureus or M.tuberculosis (PubMed:21255211) {ECO:0000250|UniProtKB:P35295, ECO:0000269|PubMed:21255211}

Tissue Location

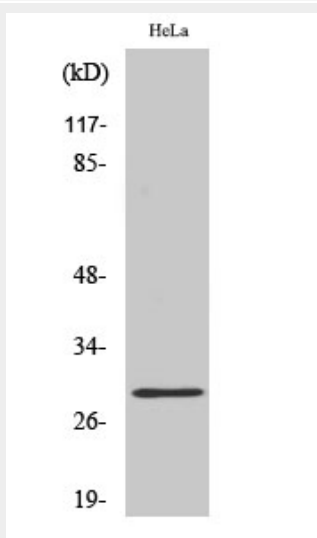
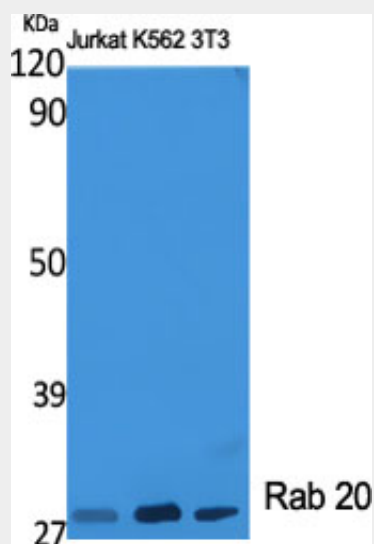
Low or absent expression in normal pancreas and stronger expression in 15 of 18 exocrine pancreatic adenocarcinomas (at protein level).

Rab 20 Polyclonal Antibody - Protocols

Provided below are standard protocols that you may find useful for product applications.

- [Western Blot](#)
- [Blocking Peptides](#)
- [Dot Blot](#)
- [Immunohistochemistry](#)
- [Immunofluorescence](#)
- [Immunoprecipitation](#)
- [Flow Cytometry](#)
- [Cell Culture](#)

Rab 20 Polyclonal Antibody - Images



Rab 20 Polyclonal Antibody - Background

Plays a role in apical endocytosis/recycling. Plays a role in the maturation and acidification of phagosomes that engulf pathogens, such as *S.aureus* and *M.tuberculosis*. Plays a role in the fusion of phagosomes with lysosomes.