

**QM Polyclonal Antibody**  
Catalog # AP72099**Specification**

---

**QM Polyclonal Antibody - Product Information**

Application	WB
Primary Accession	<a href="#">P27635</a>
Reactivity	Human, Mouse, Rat
Host	Rabbit
Clonality	Polyclonal

**QM Polyclonal Antibody - Additional Information****Gene ID** 6134**Other Names**

RPL10; DXS648E; QM; 60S ribosomal protein L10; Laminin receptor homolog; Protein QM; Tumor suppressor QM

**Dilution**

WB~~Western Blot: 1/500 - 1/2000. ELISA: 1/20000. Not yet tested in other applications.

**Format**

Liquid in PBS containing 50% glycerol, 0.5% BSA and 0.09% (W/V) sodium azide.

**Storage Conditions**

-20°C

**QM Polyclonal Antibody - Protein Information****Name** RPL10 ([HGNC:10298](#))**Synonyms** DXS648E, QM**Function**

Component of the large ribosomal subunit (PubMed: [26290468](http://www.uniprot.org/citations/26290468)). Plays a role in the formation of actively translating ribosomes (PubMed: [26290468](http://www.uniprot.org/citations/26290468)). May play a role in the embryonic brain development (PubMed: [25316788](http://www.uniprot.org/citations/25316788)).

**Cellular Location**

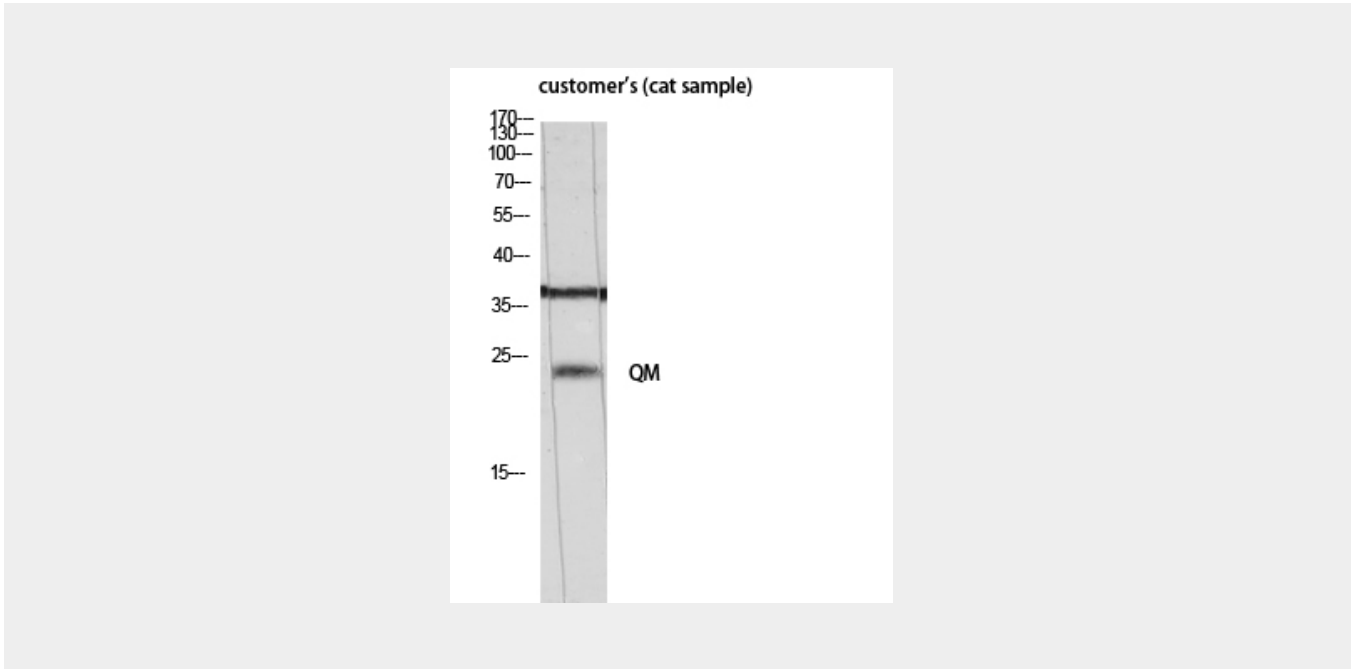
Cytoplasm {ECO:0000250|UniProtKB:Q6ZWV3}.

**QM Polyclonal Antibody - Protocols**

Provided below are standard protocols that you may find useful for product applications.

- [Western Blot](#)
- [Blocking Peptides](#)
- [Dot Blot](#)
- [Immunohistochemistry](#)
- [Immunofluorescence](#)
- [Immunoprecipitation](#)
- [Flow Cytometry](#)
- [Cell Culture](#)

#### QM Polyclonal Antibody - Images



#### QM Polyclonal Antibody - Background

Component of the large ribosomal subunit (PubMed:26290468). Plays a role in the formation of actively translating ribosomes (PubMed:26290468). May play a role in the embryonic brain development (PubMed:25316788).