

PUMA Polyclonal Antibody
Catalog # AP72090**Specification**

PUMA Polyclonal Antibody - Product Information

Application	WB
Primary Accession	Q9BXH1
Reactivity	Human, Mouse, Rat
Host	Rabbit
Clonality	Polyclonal

PUMA Polyclonal Antibody - Additional Information**Gene ID** 27113**Other Names**

BBC3; PUMA; Bcl-2-binding component 3; JFY-1; p53 up-regulated modulator of apoptosis

Dilution

WB~~Western Blot: 1/500 - 1/2000. ELISA: 1/10000. Not yet tested in other applications.

Format

Liquid in PBS containing 50% glycerol, 0.5% BSA and 0.09% (W/V) sodium azide.

Storage Conditions

-20°C

PUMA Polyclonal Antibody - Protein Information**Name** BBC3**Synonyms** PUMA**Function**

Essential mediator of p53/TP53-dependent and p53/TP53-independent apoptosis (PubMed: [11463391](http://www.uniprot.org/citations/11463391), PubMed: [23340338](http://www.uniprot.org/citations/23340338)). Promotes partial unfolding of BCL2L1 and dissociation of BCL2L1 from p53/TP53, releasing the bound p53/TP53 to induce apoptosis (PubMed: [23340338](http://www.uniprot.org/citations/23340338)). Regulates ER stress-induced neuronal apoptosis (By similarity).

Cellular Location

Mitochondrion Note=Localized to the mitochondria in order to induce cytochrome c release

Tissue Location

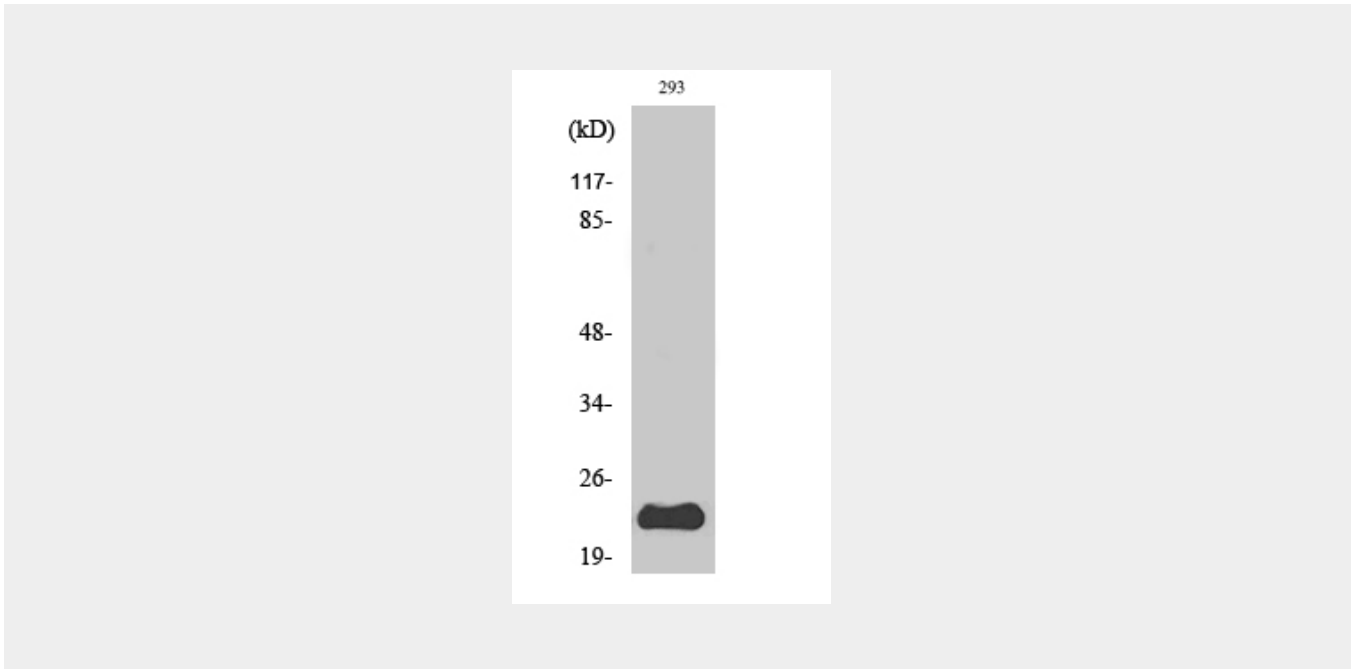
Ubiquitously expressed.

PUMA Polyclonal Antibody - Protocols

Provided below are standard protocols that you may find useful for product applications.

- [Western Blot](#)
- [Blocking Peptides](#)
- [Dot Blot](#)
- [Immunohistochemistry](#)
- [Immunofluorescence](#)
- [Immunoprecipitation](#)
- [Flow Cytometry](#)
- [Cell Culture](#)

PUMA Polyclonal Antibody - Images



PUMA Polyclonal Antibody - Background

Essential mediator of p53/TP53-dependent and p53/TP53- independent apoptosis (PubMed:11463391). Functions by promoting partial unfolding of BCL2L1 and dissociation of BCL2L1 from p53/TP53. Regulates ER stress-induced neuronal apoptosis (PubMed:23340338).