

**PRSS33 Polyclonal Antibody**  
Catalog # AP72054

**Specification**

---

**PRSS33 Polyclonal Antibody - Product Information**

|                   |                        |
|-------------------|------------------------|
| Application       | <b>WB</b>              |
| Primary Accession | <a href="#">Q8NF86</a> |
| Reactivity        | <b>Human</b>           |
| Host              | <b>Rabbit</b>          |
| Clonality         | <b>Polyclonal</b>      |

**PRSS33 Polyclonal Antibody - Additional Information**

**Gene ID** 260429

**Other Names**

PRSS33; Serine protease 33; Serine protease EOS

**Dilution**

WB~~Western Blot: 1/500 - 1/2000. Immunohistochemistry: 1/100 - 1/300. ELISA: 1/10000. Not yet tested in other applications.

**Format**

Liquid in PBS containing 50% glycerol, 0.5% BSA and 0.09% (W/V) sodium azide.

**Storage Conditions**

-20°C

**PRSS33 Polyclonal Antibody - Protein Information**

**Name** PRSS33

**Function**

Serine protease that has amidolytic activity, cleaving its substrates before Arg residues.

**Cellular Location**

Secreted.

**Tissue Location**

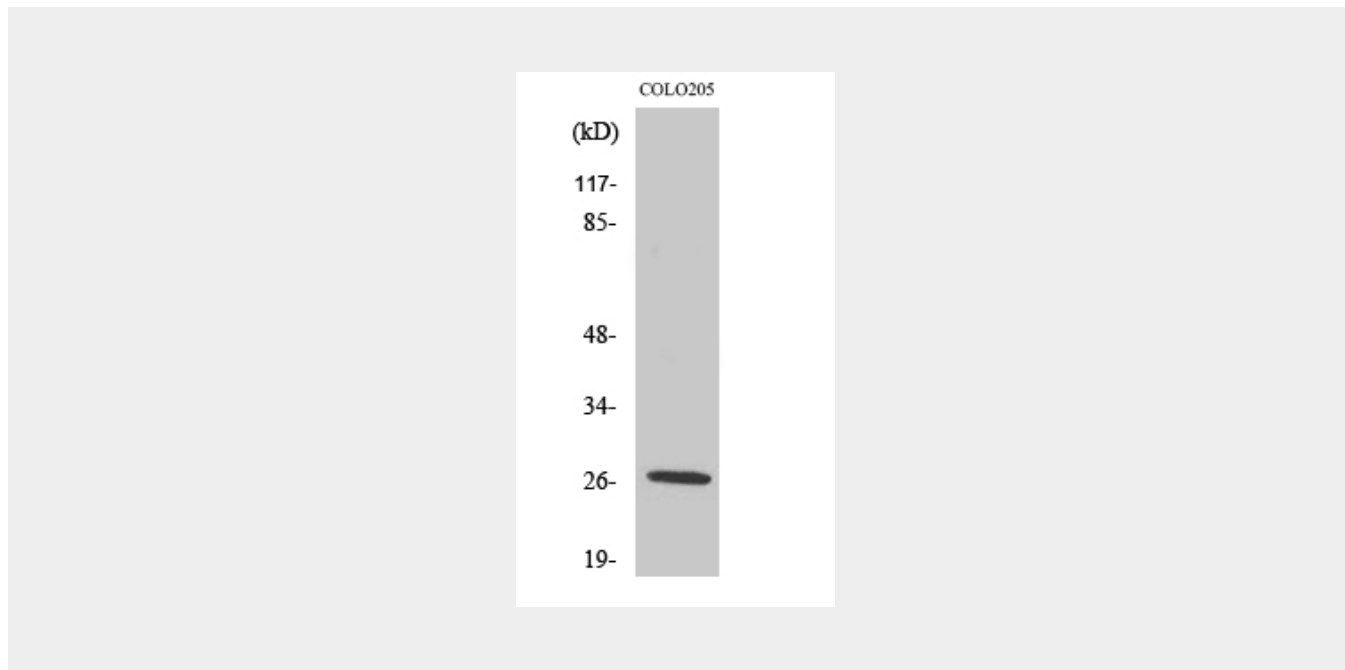
Predominantly expressed in macrophages. Present in the spleen, small and large intestine, lung and brain (at protein level). Highly expressed in peripheral leukocytes, ovary, retina, spleen and stomach. Moderately expressed in thymus, uterus and platelets, as well as some brain tissues, such as thalamus and fetal brain.

**PRSS33 Polyclonal Antibody - Protocols**

Provided below are standard protocols that you may find useful for product applications.

- [Western Blot](#)
- [Blocking Peptides](#)
- [Dot Blot](#)
- [Immunohistochemistry](#)
- [Immunofluorescence](#)
- [Immunoprecipitation](#)
- [Flow Cytometry](#)
- [Cell Culture](#)

#### **PRSS33 Polyclonal Antibody - Images**



#### **PRSS33 Polyclonal Antibody - Background**

Serine protease that has amidolytic activity, cleaving its substrates before Arg residues.