

Prothrombin Polyclonal Antibody
Catalog # AP72045**Specification**

Prothrombin Polyclonal Antibody - Product Information

Application	WB
Primary Accession	P00734
Reactivity	Human, Mouse, Rat
Host	Rabbit
Clonality	Polyclonal

Prothrombin Polyclonal Antibody - Additional Information**Gene ID** 2147**Other Names**

F2; Prothrombin; Coagulation factor II

Dilution

WB~~Western Blot: 1/500 - 1/2000. Immunohistochemistry: 1/100 - 1/300. Immunofluorescence: 1/200 - 1/1000. ELISA: 1/10000. Not yet tested in other applications.

Format

Liquid in PBS containing 50% glycerol, 0.5% BSA and 0.09% (W/V) sodium azide.

Storage Conditions

-20°C

Prothrombin Polyclonal Antibody - Protein Information**Name** F2**Function**

Thrombin, which cleaves bonds after Arg and Lys, converts fibrinogen to fibrin and activates factors V, VII, VIII, XIII, and, in complex with thrombomodulin, protein C. Functions in blood homeostasis, inflammation and wound healing.

Cellular Location

Secreted, extracellular space.

Tissue Location

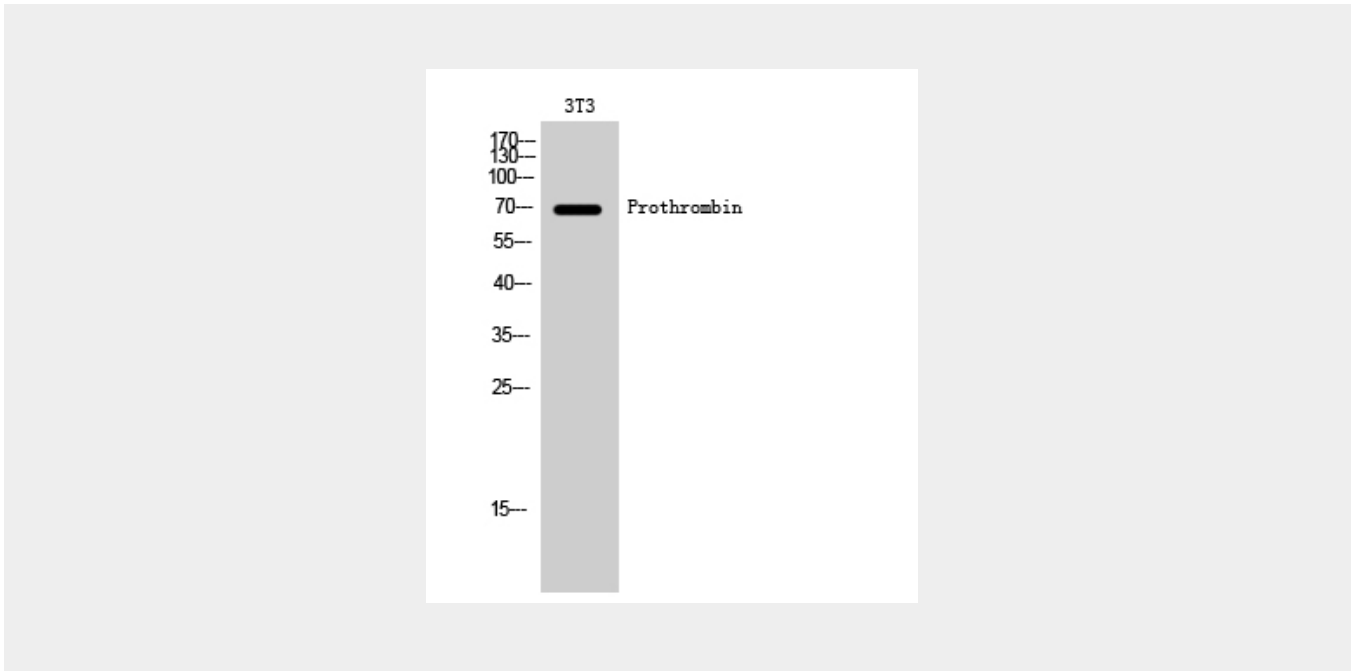
Expressed by the liver and secreted in plasma.

Prothrombin Polyclonal Antibody - Protocols

Provided below are standard protocols that you may find useful for product applications.

- [Western Blot](#)
- [Blocking Peptides](#)
- [Dot Blot](#)
- [Immunohistochemistry](#)
- [Immunofluorescence](#)
- [Immunoprecipitation](#)
- [Flow Cytometry](#)
- [Cell Culture](#)

Prothrombin Polyclonal Antibody - Images



Prothrombin Polyclonal Antibody - Background

Thrombin, which cleaves bonds after Arg and Lys, converts fibrinogen to fibrin and activates factors V, VII, VIII, XIII, and, in complex with thrombomodulin, protein C. Functions in blood homeostasis, inflammation and wound healing.