

Probetacellulin Polyclonal Antibody
Catalog # AP72044**Specification**

Probetacellulin Polyclonal Antibody - Product Information

Application	WB
Primary Accession	P35070
Reactivity	Human
Host	Rabbit
Clonality	Polyclonal

Probetacellulin Polyclonal Antibody - Additional Information**Gene ID** 685**Other Names**

BTC; Probetacellulin

Dilution

WB~~Western Blot: 1/500 - 1/2000. ELISA: 1/40000. Not yet tested in other applications.

Format

Liquid in PBS containing 50% glycerol, 0.5% BSA and 0.09% (W/V) sodium azide.

Storage Conditions

-20°C

Probetacellulin Polyclonal Antibody - Protein Information**Name** BTC**Function**

Growth factor that binds to EGFR, ERBB4 and other EGF receptor family members. Potent mitogen for retinal pigment epithelial cells and vascular smooth muscle cells.

Cellular Location

[Betacellulin]: Secreted, extracellular space.

Tissue Location

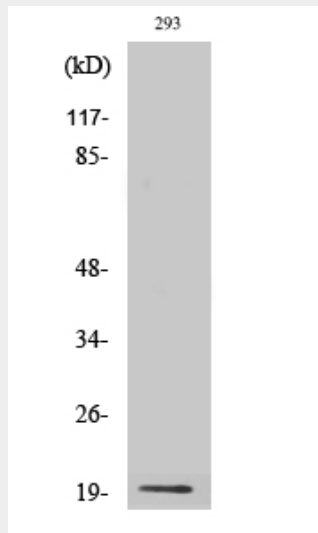
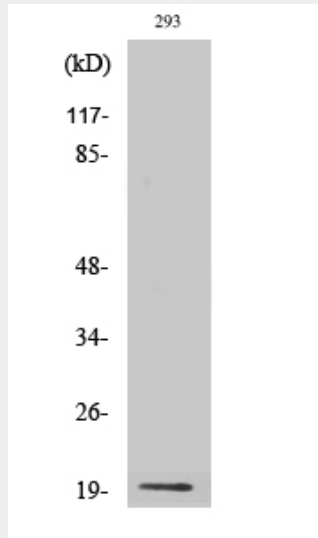
Synthesized in several tissues and tumor cells. Predominantly expressed in pancreas and small intestine

Probetacellulin Polyclonal Antibody - Protocols

Provided below are standard protocols that you may find useful for product applications.

- [Western Blot](#)
- [Blocking Peptides](#)
- [Dot Blot](#)
- [Immunohistochemistry](#)
- [Immunofluorescence](#)
- [Immunoprecipitation](#)
- [Flow Cytometry](#)
- [Cell Culture](#)

Probetacellulin Polyclonal Antibody - Images



Probetacellulin Polyclonal Antibody - Background

Growth factor that binds to EGFR, ERBB4 and other EGF receptor family members. Potent mitogen for retinal pigment epithelial cells and vascular smooth muscle cells.