

**Plakophilin 4 Polyclonal Antibody**  
Catalog # AP71968**Specification**

---

**Plakophilin 4 Polyclonal Antibody - Product Information**

Application	WB
Primary Accession	<a href="#">Q99569</a>
Reactivity	Human, Mouse
Host	Rabbit
Clonality	Polyclonal

**Plakophilin 4 Polyclonal Antibody - Additional Information****Gene ID** 8502**Other Names**

PKP4; Plakophilin-4; p0071

**Dilution**

WB~~Western Blot: 1/500 - 1/2000. Immunohistochemistry: 1/100 - 1/300. ELISA: 1/5000. Not yet tested in other applications.

**Format**

Liquid in PBS containing 50% glycerol, 0.5% BSA and 0.09% (W/V) sodium azide.

**Storage Conditions**

-20°C

**Plakophilin 4 Polyclonal Antibody - Protein Information****Name** PKP4**Function**

Plays a role as a regulator of Rho activity during cytokinesis. May play a role in junctional plaques.

**Cellular Location**

Cell junction, desmosome. Cytoplasm, cytoskeleton, spindle. Midbody Cell membrane; Peripheral membrane protein. Note=Associated with the pericentrosomal region in interphase and with spindle poles during mitosis. In anaphase, during chromosome segregation, is recruited to the central microtubule bundle, focussed at the spindle midzone and ultimately localizes to the midbody at cytokinesis. Constituent of the midbody cytoskeletal matrix. Colocalized with desmoplakin at desmosomal junctional plaques in cultured epithelial cells

**Tissue Location**

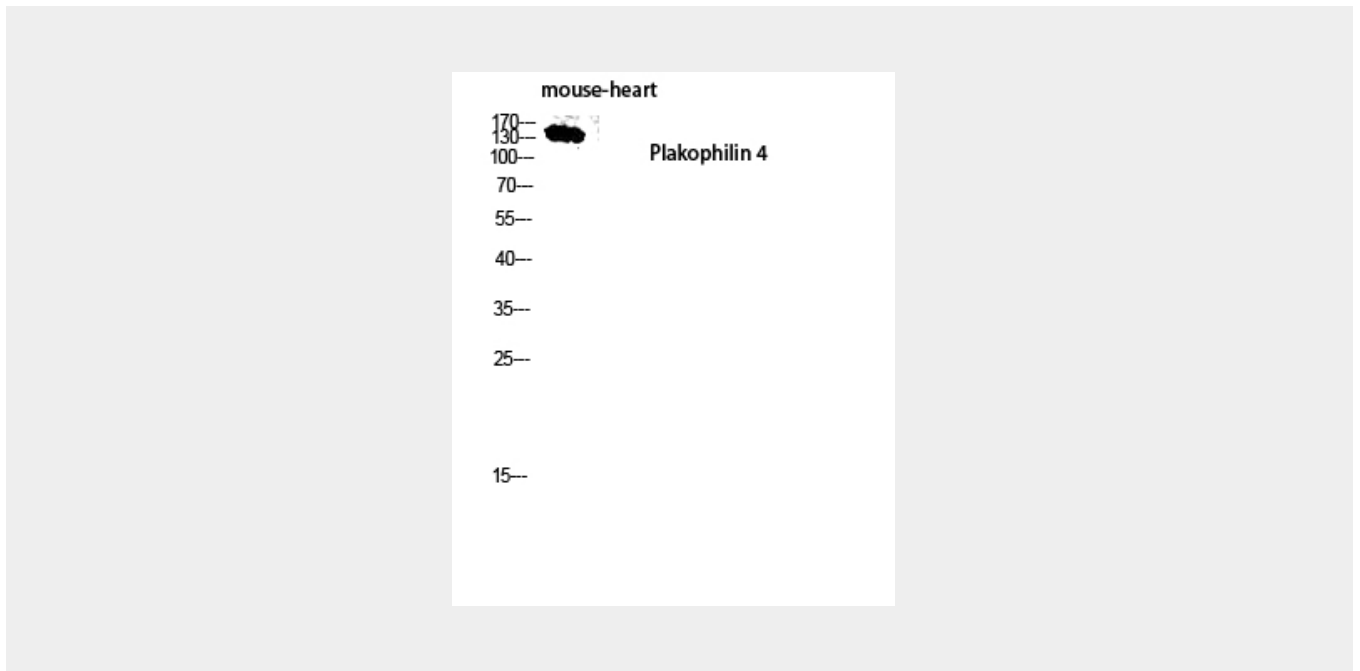
Expressed in salivary glands (at protein level) (PubMed:30479852). Expressed in arrector pili muscle (at protein level) (PubMed:29034528).

## Plakophilin 4 Polyclonal Antibody - Protocols

Provided below are standard protocols that you may find useful for product applications.

- [Western Blot](#)
- [Blocking Peptides](#)
- [Dot Blot](#)
- [Immunohistochemistry](#)
- [Immunofluorescence](#)
- [Immunoprecipitation](#)
- [Flow Cytometry](#)
- [Cell Culture](#)

## Plakophilin 4 Polyclonal Antibody - Images



## Plakophilin 4 Polyclonal Antibody - Background

Plays a role as a regulator of Rho activity during cytokinesis. May play a role in junctional plaques.