

**PKA $\gamma$  cat Polyclonal Antibody**  
Catalog # AP71934**Specification**

---

**PKA $\gamma$  cat Polyclonal Antibody - Product Information**

Application	<b>WB</b>
Primary Accession	<a href="#">P22612</a>
Reactivity	<b>Human</b>
Host	<b>Rabbit</b>
Clonality	<b>Polyclonal</b>

**PKA $\gamma$  cat Polyclonal Antibody - Additional Information****Gene ID** 5568**Other Names**

PRKACG; cAMP-dependent protein kinase catalytic subunit gamma; PKA C-gamma

**Dilution**

WB~~Western Blot: 1/500 - 1/2000. Immunohistochemistry: 1/100 - 1/300. ELISA: 1/10000. Not yet tested in other applications.

**Format**

Liquid in PBS containing 50% glycerol, 0.5% BSA and 0.09% (W/V) sodium azide.

**Storage Conditions**

-20°C

**PKA $\gamma$  cat Polyclonal Antibody - Protein Information****Name** PRKACG**Function**

Phosphorylates a large number of substrates in the cytoplasm and the nucleus.

**Tissue Location**

Testis specific. But important tissues such as brain and ovary have not been analyzed for the content of transcript

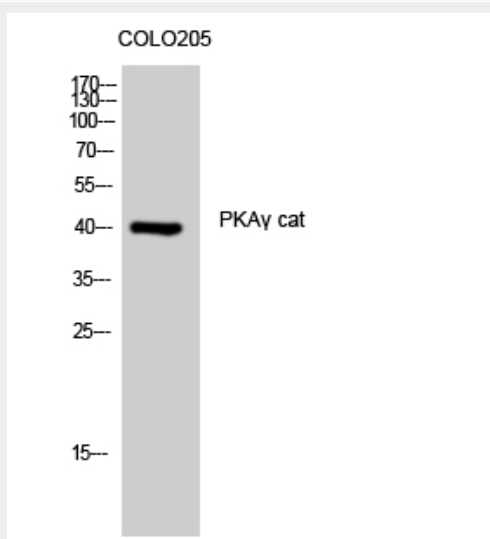
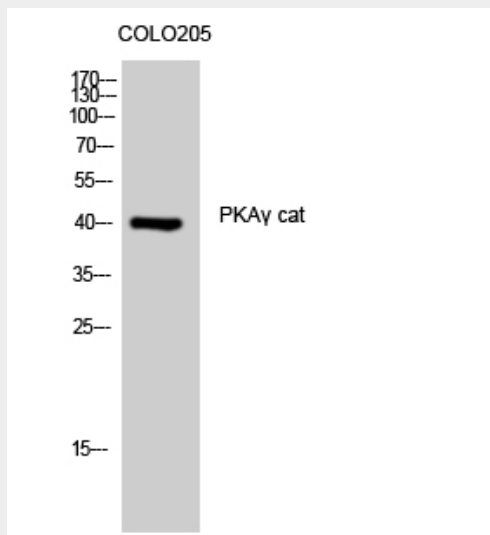
**PKA $\gamma$  cat Polyclonal Antibody - Protocols**

Provided below are standard protocols that you may find useful for product applications.

- [Western Blot](#)
- [Blocking Peptides](#)
- [Dot Blot](#)

- [Immunohistochemistry](#)
- [Immunofluorescence](#)
- [Immunoprecipitation](#)
- [Flow Cytometry](#)
- [Cell Culture](#)

### PKA $\gamma$ cat Polyclonal Antibody - Images



### PKA $\gamma$ cat Polyclonal Antibody - Background

Phosphorylates a large number of substrates in the cytoplasm and the nucleus.