

PKA I β reg Polyclonal Antibody
Catalog # AP71930**Specification**

PKA I β reg Polyclonal Antibody - Product Information

Application	WB
Primary Accession	P31321
Reactivity	Human, Mouse, Rat
Host	Rabbit
Clonality	Polyclonal

PKA I β reg Polyclonal Antibody - Additional Information**Gene ID** 5575**Other Names**

PRKAR1B; cAMP-dependent protein kinase type I-beta regulatory subunit

Dilution

WB~~Western Blot: 1/500 - 1/2000. Immunohistochemistry: 1/100 - 1/300. ELISA: 1/20000. Not yet tested in other applications.

Format

Liquid in PBS containing 50% glycerol, 0.5% BSA and 0.09% (W/V) sodium azide.

Storage Conditions

-20°C

PKA I β reg Polyclonal Antibody - Protein Information**Name** PRKAR1B**Function**

Regulatory subunit of the cAMP-dependent protein kinases involved in cAMP signaling in cells.

Cellular Location

Cell membrane.

Tissue Location

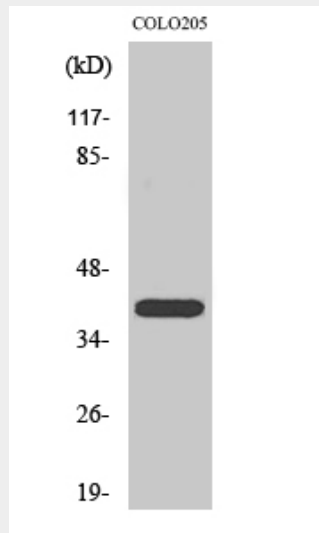
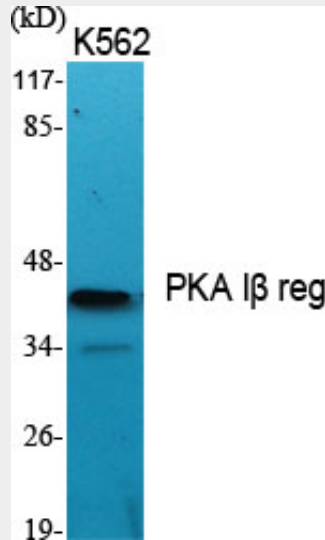
Four types of regulatory chains are found: I-alpha, I-beta, II-alpha, and II-beta. Their expression varies among tissues and is in some cases constitutive and in others inducible

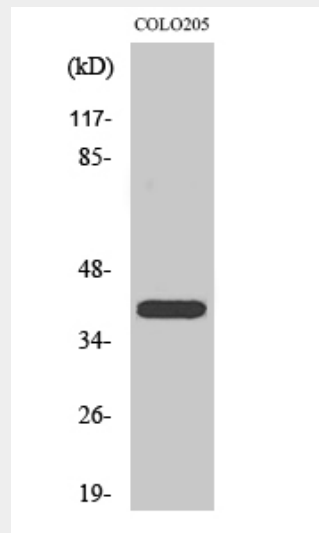
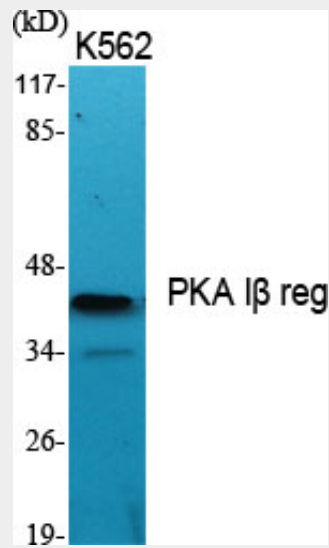
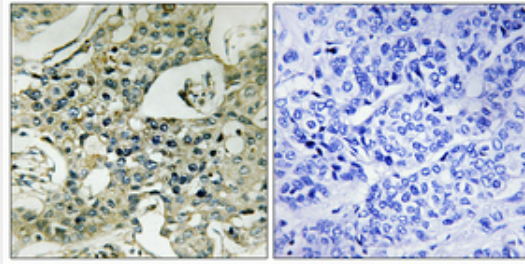
PKA I β reg Polyclonal Antibody - Protocols

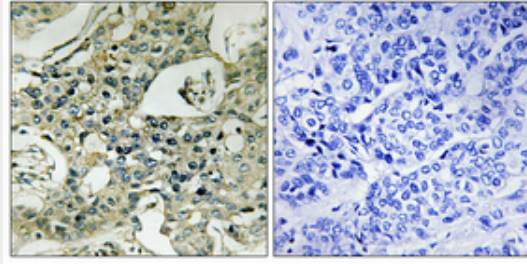
Provided below are standard protocols that you may find useful for product applications.

- [Western Blot](#)
- [Blocking Peptides](#)
- [Dot Blot](#)
- [Immunohistochemistry](#)
- [Immunofluorescence](#)
- [Immunoprecipitation](#)
- [Flow Cytometry](#)
- [Cell Culture](#)

PKA I β reg Polyclonal Antibody - Images







PKA I β reg Polyclonal Antibody - Background

Regulatory subunit of the cAMP-dependent protein kinases involved in cAMP signaling in cells.