

**PKA I $\alpha$  reg Polyclonal Antibody**  
Catalog # AP71929**Specification**

---

**PKA I $\alpha$  reg Polyclonal Antibody - Product Information**

Application	WB
Primary Accession	<a href="#">P10644</a>
Reactivity	Human, Mouse, Rat
Host	Rabbit
Clonality	Polyclonal

**PKA I $\alpha$  reg Polyclonal Antibody - Additional Information****Gene ID** 5573**Other Names**

PRKAR1A; PKR1; PRKAR1; TSE1; cAMP-dependent protein kinase type I-alpha regulatory subunit; Tissue-specific extinguisher 1; TSE1

**Dilution**

WB~~Western Blot: 1/500 - 1/2000. Immunohistochemistry: 1/100 - 1/300. Immunofluorescence: 1/200 - 1/1000. ELISA: 1/20000. Not yet tested in other applications.

**Format**

Liquid in PBS containing 50% glycerol, 0.5% BSA and 0.09% (W/V) sodium azide.

**Storage Conditions**

-20°C

**PKA I $\alpha$  reg Polyclonal Antibody - Protein Information****Name** PRKAR1A**Synonyms** PKR1, PRKAR1, TSE1**Function**

Regulatory subunit of the cAMP-dependent protein kinases involved in cAMP signaling in cells.

**Cellular Location**

Cell membrane.

**Tissue Location**

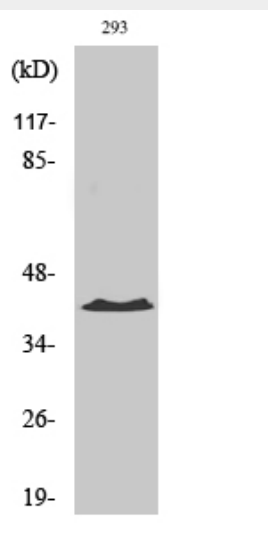
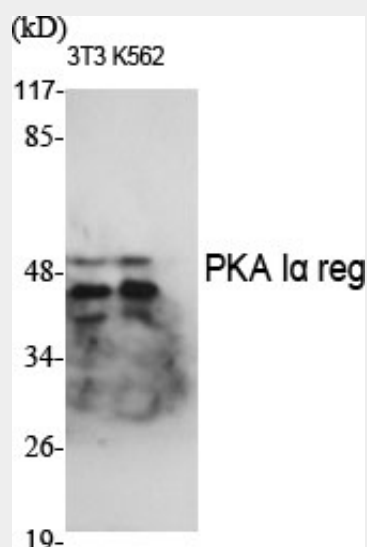
Four types of regulatory chains are found: I-alpha, I-beta, II-alpha, and II-beta. Their expression varies among tissues and is in some cases constitutive and in others inducible

**PKA I $\alpha$  reg Polyclonal Antibody - Protocols**

Provided below are standard protocols that you may find useful for product applications.

- [Western Blot](#)
- [Blocking Peptides](#)
- [Dot Blot](#)
- [Immunohistochemistry](#)
- [Immunofluorescence](#)
- [Immunoprecipitation](#)
- [Flow Cytometry](#)
- [Cell Culture](#)

#### PKA $\alpha$ reg Polyclonal Antibody - Images



#### PKA $\alpha$ reg Polyclonal Antibody - Background

Regulatory subunit of the cAMP-dependent protein kinases involved in cAMP signaling in cells.