

PKA II α reg Polyclonal Antibody
Catalog # AP71927**Specification**

PKA II α reg Polyclonal Antibody - Product Information

Application	WB
Primary Accession	P13861
Reactivity	Human
Host	Rabbit
Clonality	Polyclonal

PKA II α reg Polyclonal Antibody - Additional Information**Gene ID** 5576**Other Names**

PRKAR2A; PKR2; PRKAR2; cAMP-dependent protein kinase type II-alpha regulatory subunit

Dilution

WB~~Western Blot: 1/500 - 1/2000. Immunohistochemistry: 1/100 - 1/300. Immunofluorescence: 1/200 - 1/1000. ELISA: 1/10000. Not yet tested in other applications.

Format

Liquid in PBS containing 50% glycerol, 0.5% BSA and 0.09% (W/V) sodium azide.

Storage Conditions

-20°C

PKA II α reg Polyclonal Antibody - Protein Information**Name** PRKAR2A**Synonyms** PKR2, PRKAR2**Function**

Regulatory subunit of the cAMP-dependent protein kinases involved in cAMP signaling in cells. Type II regulatory chains mediate membrane association by binding to anchoring proteins, including the MAP2 kinase.

Cellular Location

Cytoplasm. Cell membrane. Note=Colocalizes with PJA2 in the cytoplasm and the cell membrane

Tissue Location

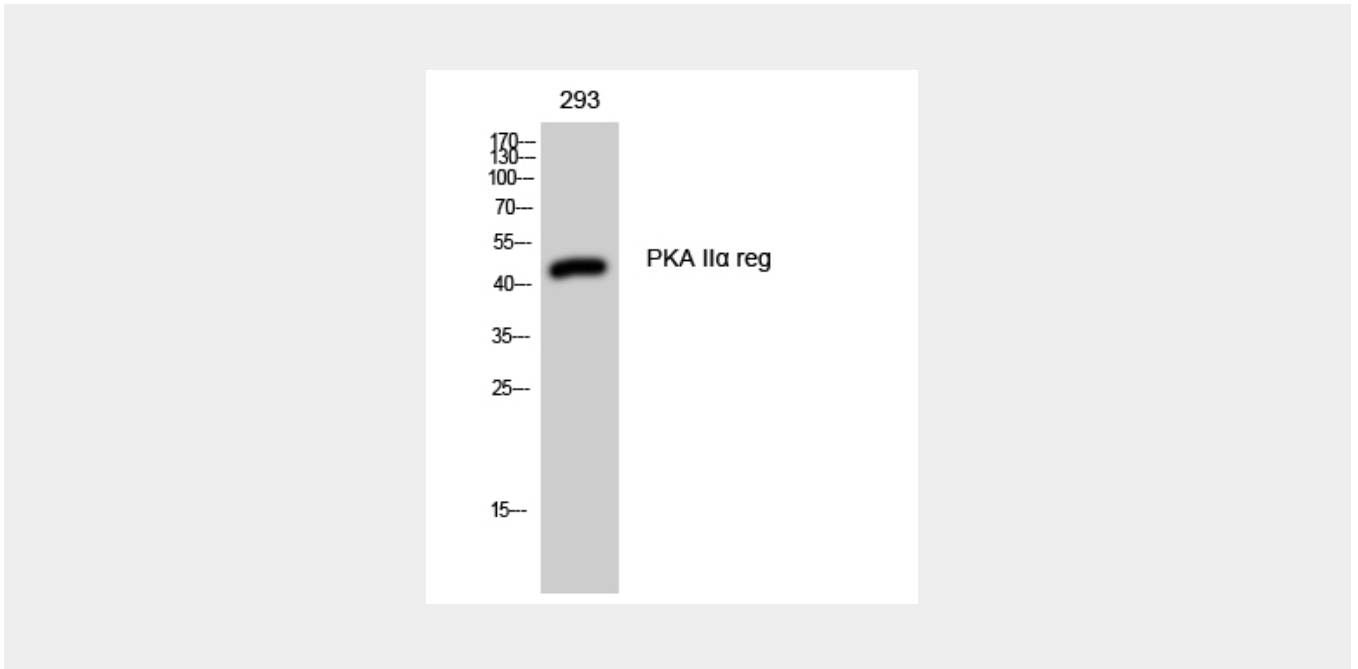
Four types of regulatory chains are found: I-alpha, I-beta, II-alpha, and II-beta. Their expression varies among tissues and is in some cases constitutive and in others inducible

PKA II α reg Polyclonal Antibody - Protocols

Provided below are standard protocols that you may find useful for product applications.

- [Western Blot](#)
- [Blocking Peptides](#)
- [Dot Blot](#)
- [Immunohistochemistry](#)
- [Immunofluorescence](#)
- [Immunoprecipitation](#)
- [Flow Cytometry](#)
- [Cell Culture](#)

PKA II α reg Polyclonal Antibody - Images



PKA II α reg Polyclonal Antibody - Background

Regulatory subunit of the cAMP-dependent protein kinases involved in cAMP signaling in cells. Type II regulatory chains mediate membrane association by binding to anchoring proteins, including the MAP2 kinase.