

**Pitx1 Polyclonal Antibody**  
Catalog # AP71923**Specification**

---

**Pitx1 Polyclonal Antibody - Product Information**

|                   |                          |
|-------------------|--------------------------|
| Application       | <b>WB</b>                |
| Primary Accession | <a href="#">P78337</a>   |
| Reactivity        | <b>Human, Mouse, Rat</b> |
| Host              | <b>Rabbit</b>            |
| Clonality         | <b>Polyclonal</b>        |

**Pitx1 Polyclonal Antibody - Additional Information****Gene ID** 5307**Other Names**

PITX1; BFT; PTX1; Pituitary homeobox 1; Hindlimb-expressed homeobox protein backfoot; Homeobox protein PITX1; Paired-like homeodomain transcription factor 1

**Dilution**

WB~~Western Blot: 1/500 - 1/2000. Immunohistochemistry: 1/100 - 1/300. ELISA: 1/20000. Not yet tested in other applications.

**Format**

Liquid in PBS containing 50% glycerol, 0.5% BSA and 0.09% (W/V) sodium azide.

**Storage Conditions**

-20°C

**Pitx1 Polyclonal Antibody - Protein Information****Name** PITX1**Synonyms** BFT, PTX1**Function**

Sequence-specific transcription factor that binds gene promoters and activates their transcription. May play a role in the development of anterior structures, and in particular, the brain and facies and in specifying the identity or structure of hindlimb.

**Cellular Location**

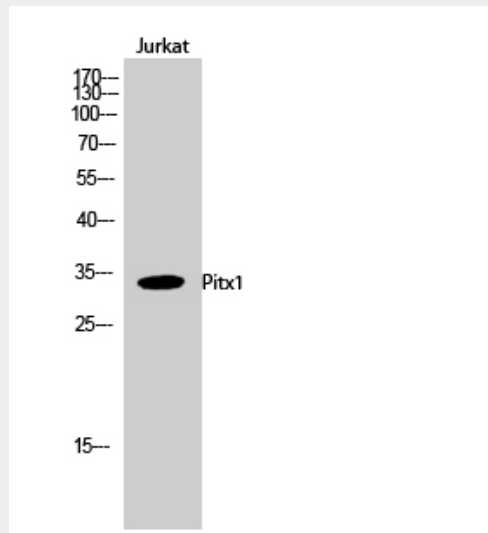
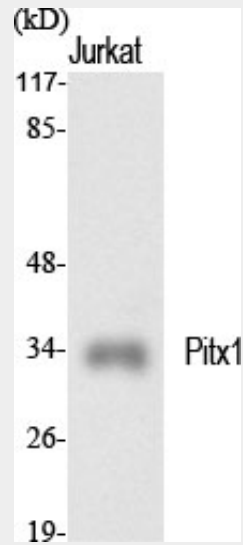
Nucleus.

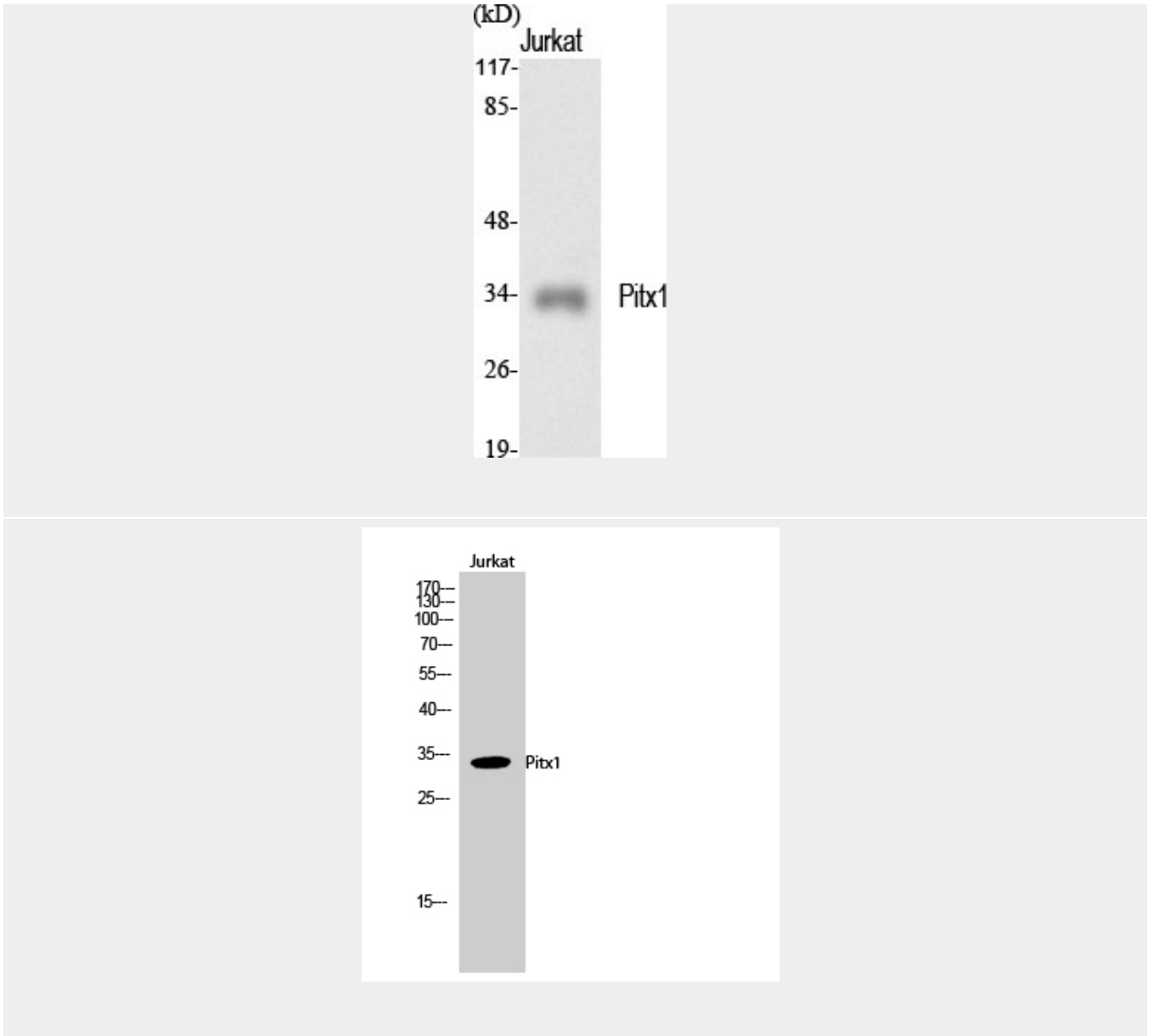
**Pitx1 Polyclonal Antibody - Protocols**

Provided below are standard protocols that you may find useful for product applications.

- [Western Blot](#)
- [Blocking Peptides](#)
- [Dot Blot](#)
- [Immunohistochemistry](#)
- [Immunofluorescence](#)
- [Immunoprecipitation](#)
- [Flow Cytometry](#)
- [Cell Culture](#)

### Pitx1 Polyclonal Antibody - Images





### **Pitx1 Polyclonal Antibody - Background**

Sequence-specific transcription factor that binds gene promoters and activates their transcription. May play a role in the development of anterior structures, and in particular, the brain and facies and in specifying the identity or structure of hindlimb.