

**PITSLRE Polyclonal Antibody**  
Catalog # AP71922**Specification****PITSLRE Polyclonal Antibody - Product Information**

Application	WB
Primary Accession	<a href="#">P21127</a>
Reactivity	Human, Mouse
Host	Rabbit
Clonality	Polyclonal

**PITSLRE Polyclonal Antibody - Additional Information****Gene ID** 984**Other Names**

CDK11B; CDC2L1; CDK11; PITSLREA; PK58; Cyclin-dependent kinase 11B; Cell division cycle 2-like protein kinase 1; CLK-1; Cell division protein kinase 11B; Galactosyltransferase-associated protein kinase p58/GTA; PITSLRE serine/threonine-prot

**Dilution**

WB~~Western Blot: 1/500 - 1/2000. Immunohistochemistry: 1/100 - 1/300. ELISA: 1/20000. Not yet tested in other applications.

**Format**

Liquid in PBS containing 50% glycerol, 0.5% BSA and 0.09% (W/V) sodium azide.

**Storage Conditions**

-20°C

**PITSLRE Polyclonal Antibody - Protein Information****Name** CDK11B**Synonyms** CDC2L1, CDK11, PITSLREA, PK58**Function**

Plays multiple roles in cell cycle progression, cytokinesis and apoptosis. Involved in pre-mRNA splicing in a kinase activity- dependent manner. Isoform 7 may act as a negative regulator of normal cell cycle progression.

**Cellular Location**

Cytoplasm. Nucleus.

**Tissue Location**

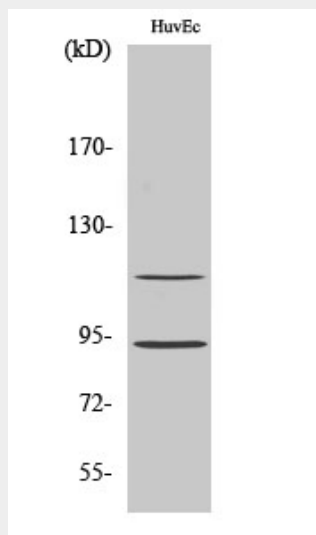
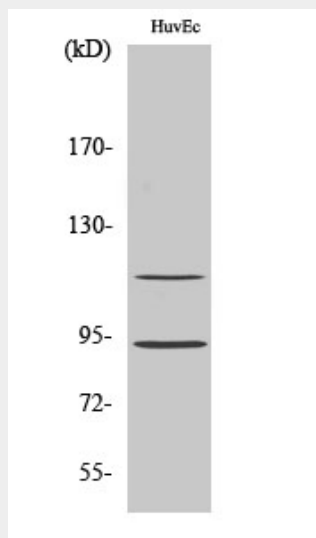
Expressed ubiquitously. Some evidence of isoform- specific tissue distribution.

## PITSLRE Polyclonal Antibody - Protocols

Provided below are standard protocols that you may find useful for product applications.

- [Western Blot](#)
- [Blocking Peptides](#)
- [Dot Blot](#)
- [Immunohistochemistry](#)
- [Immunofluorescence](#)
- [Immunoprecipitation](#)
- [Flow Cytometry](#)
- [Cell Culture](#)

## PITSLRE Polyclonal Antibody - Images



## PITSLRE Polyclonal Antibody - Background

Plays multiple roles in cell cycle progression, cytokinesis and apoptosis. Involved in pre-mRNA

splicing in a kinase activity-dependent manner. Isoform 7 may act as a negative regulator of normal cell cycle progression.