

PIG3 Polyclonal Antibody
Catalog # AP71906**Specification**

PIG3 Polyclonal Antibody - Product Information

Application	WB
Primary Accession	Q53FA7
Reactivity	Human
Host	Rabbit
Clonality	Polyclonal

PIG3 Polyclonal Antibody - Additional Information**Gene ID** 9540**Other Names**

TP53I3; PIG3; Quinone oxidoreductase PIG3; Tumor protein p53-inducible protein 3; p53-induced gene 3 protein

Dilution

WB~~Western Blot: 1/500 - 1/2000. Immunohistochemistry: 1/100 - 1/300. ELISA: 1/20000. Not yet tested in other applications.

Format

Liquid in PBS containing 50% glycerol, 0.5% BSA and 0.09% (W/V) sodium azide.

Storage Conditions

-20°C

PIG3 Polyclonal Antibody - Protein Information**Name** TP53I3 ([HGNC:19373](#))**Synonyms** PIG3**Function**

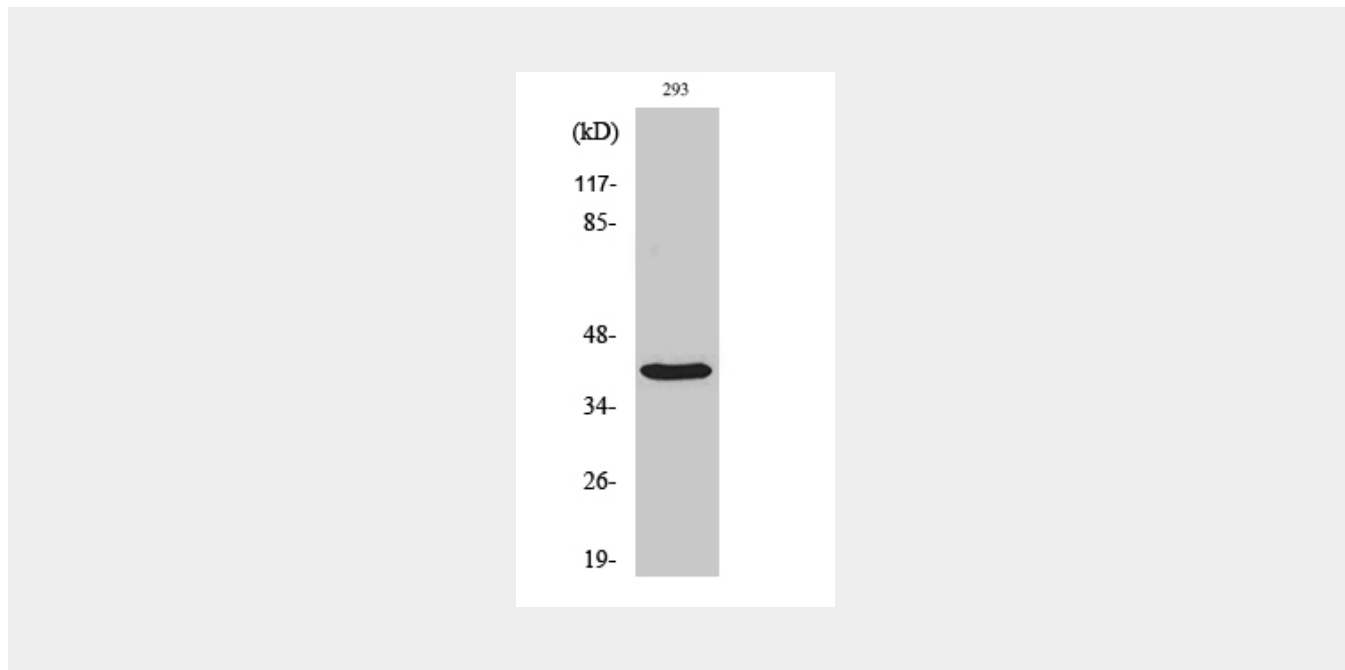
Catalyzes the NADPH-dependent reduction of quinones (PubMed:19349281). Exhibits a low enzymatic activity with beta- naphthoquinones, with a strong preference for the ortho-quinone isomer (1,2-beta-naphthoquinone) over the para isomer (1,4-beta- naphthoquinone). Also displays a low reductase activity for non-quinone compounds such as diamine and 2,6-dichloroindophenol (in vitro) (PubMed:19349281). Involved in the generation of reactive oxygen species (ROS) (PubMed:19349281).

PIG3 Polyclonal Antibody - Protocols

Provided below are standard protocols that you may find useful for product applications.

- [Western Blot](#)
- [Blocking Peptides](#)
- [Dot Blot](#)
- [Immunohistochemistry](#)
- [Immunofluorescence](#)
- [Immunoprecipitation](#)
- [Flow Cytometry](#)
- [Cell Culture](#)

PIG3 Polyclonal Antibody - Images



PIG3 Polyclonal Antibody - Background

May be involved in the generation of reactive oxygen species (ROS). Has low NADPH-dependent beta-naphthoquinone reductase activity, with a preference for 1,2-beta-naphthoquinone over 1,4-beta-naphthoquinone. Has low NADPH-dependent diamine reductase activity (in vitro).