

**PIAS 3 Polyclonal Antibody**  
Catalog # AP71901**Specification****PIAS 3 Polyclonal Antibody - Product Information**

Application	WB
Primary Accession	<a href="#">Q9Y6X2</a>
Reactivity	Human, Mouse, Rat
Host	Rabbit
Clonality	Polyclonal

**PIAS 3 Polyclonal Antibody - Additional Information****Gene ID** 10401**Other Names**

PIAS3; E3 SUMO-protein ligase PIAS3; Protein inhibitor of activated STAT protein 3

**Dilution**

WB~~Western Blot: 1/500 - 1/2000. Immunohistochemistry: 1/100 - 1/300. ELISA: 1/10000. Not yet tested in other applications.

**Format**

Liquid in PBS containing 50% glycerol, 0.5% BSA and 0.09% (W/V) sodium azide.

**Storage Conditions**

-20°C

**PIAS 3 Polyclonal Antibody - Protein Information****Name** PIAS3**Function**

Functions as an E3-type small ubiquitin-like modifier (SUMO) ligase, stabilizing the interaction between UBE2I and the substrate, and as a SUMO-tethering factor. Plays a crucial role as a transcriptional coregulation in various cellular pathways, including the STAT pathway and the steroid hormone signaling pathway. Involved in regulating STAT3 signaling via inhibiting STAT3 DNA-binding and suppressing cell growth. Enhances the sumoylation of MTA1 and may participate in its paralog-selective sumoylation (PubMed:<a href="http://www.uniprot.org/citations/21965678" target="\_blank">21965678</a>, PubMed:<a href="http://www.uniprot.org/citations/9388184" target="\_blank">9388184</a>). Sumoylates CCAR2 which promotes its interaction with SIRT1 (PubMed:<a href="http://www.uniprot.org/citations/25406032" target="\_blank">25406032</a>). Diminishes the sumoylation of ZFH3 by preventing the colocalization of ZFH3 with SUMO1 in the nucleus (PubMed:<a href="http://www.uniprot.org/citations/24651376" target="\_blank">24651376</a>).

**Cellular Location**

Cytoplasm {ECO:0000250|UniProtKB:O54714}. Nucleus {ECO:0000250|UniProtKB:O54714}.

Nucleus speckle {ECO:0000250|UniProtKB:O54714}. Note=Colocalizes with MITF in the nucleus. Colocalizes with GFI1 in nuclear dots. Colocalizes with SUMO1 in nuclear granules. {ECO:0000250|UniProtKB:O54714}

#### Tissue Location

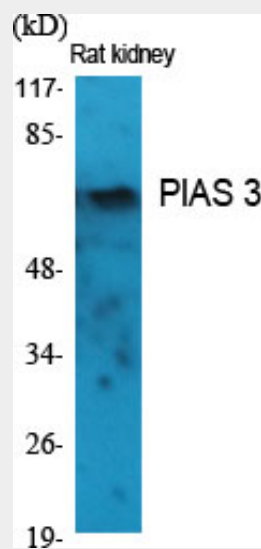
Widely expressed..

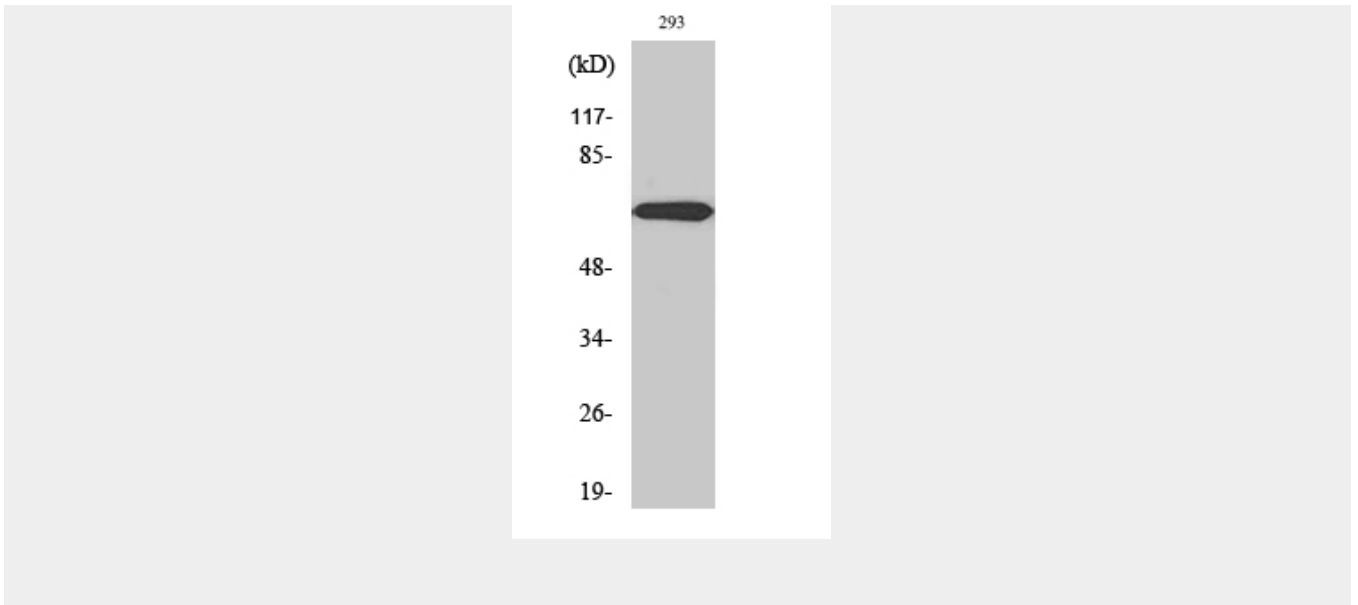
#### PIAS 3 Polyclonal Antibody - Protocols

Provided below are standard protocols that you may find useful for product applications.

- [Western Blot](#)
- [Blocking Peptides](#)
- [Dot Blot](#)
- [Immunohistochemistry](#)
- [Immunofluorescence](#)
- [Immunoprecipitation](#)
- [Flow Cytometry](#)
- [Cell Culture](#)

#### PIAS 3 Polyclonal Antibody - Images





### PIAS 3 Polyclonal Antibody - Background

Functions as an E3-type small ubiquitin-like modifier (SUMO) ligase, stabilizing the interaction between UBE2I and the substrate, and as a SUMO-tethering factor. Plays a crucial role as a transcriptional coregulation in various cellular pathways, including the STAT pathway and the steroid hormone signaling pathway. Involved in regulating STAT3 signaling via inhibiting STAT3 DNA-binding and suppressing cell growth. Enhances the sumoylation of MTA1 and may participate in its paralog-selective sumoylation (PubMed:21965678, PubMed:9388184). Sumoylates CCAR2 which promotes its interaction with SIRT1 (PubMed:25406032). Diminishes the sumoylation of ZFH3 by preventing the colocalization of ZFH3 with SUMO1 in the nucleus (PubMed:24651376).