

**PHKG1 Polyclonal Antibody**  
Catalog # AP71885**Specification**

---

**PHKG1 Polyclonal Antibody - Product Information**

Application	<b>WB</b>
Primary Accession	<a href="#">Q16816</a>
Reactivity	<b>Human</b>
Host	<b>Rabbit</b>
Clonality	<b>Polyclonal</b>

**PHKG1 Polyclonal Antibody - Additional Information****Gene ID** 5260**Other Names**

PHKG1; PHKG; Phosphorylase b kinase gamma catalytic chain; skeletal muscle isoform; Phosphorylase kinase subunit gamma-1

**Dilution**

WB~~Western Blot: 1/500 - 1/2000. ELISA: 1/20000. Not yet tested in other applications.

**Format**

Liquid in PBS containing 50% glycerol, 0.5% BSA and 0.09% (W/V) sodium azide.

**Storage Conditions**

-20°C

**PHKG1 Polyclonal Antibody - Protein Information****Name** PHKG1**Synonyms** PHKG**Function**

Catalytic subunit of the phosphorylase b kinase (PHK), which mediates the neural and hormonal regulation of glycogen breakdown (glycogenolysis) by phosphorylating and thereby activating glycogen phosphorylase. In vitro, phosphorylates PYGM, TNNI3, MAPT/TAU, GAP43 and NRGN/RC3 (By similarity).

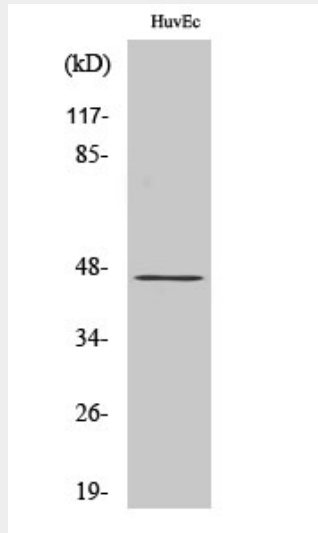
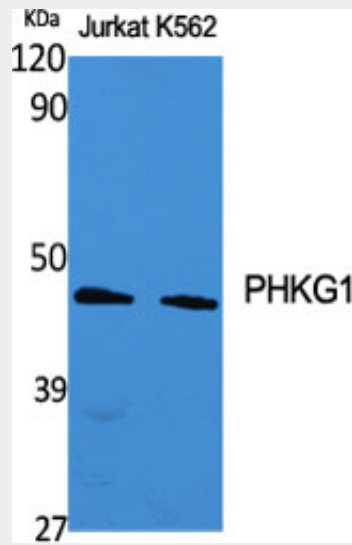
**PHKG1 Polyclonal Antibody - Protocols**

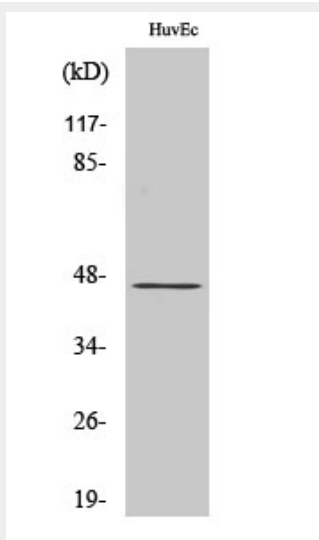
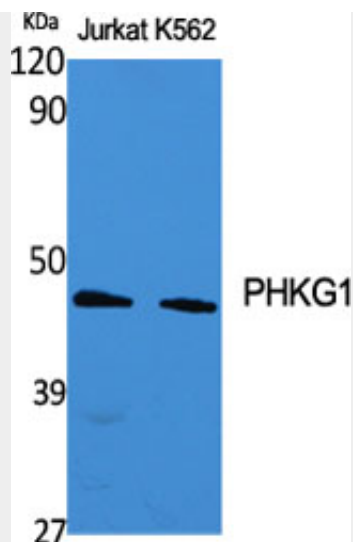
Provided below are standard protocols that you may find useful for product applications.

- [Western Blot](#)
- [Blocking Peptides](#)

- [Dot Blot](#)
- [Immunohistochemistry](#)
- [Immunofluorescence](#)
- [Immunoprecipitation](#)
- [Flow Cytometry](#)
- [Cell Culture](#)

### PHKG1 Polyclonal Antibody - Images





### PHKG1 Polyclonal Antibody - Background

Catalytic subunit of the phosphorylase b kinase (PHK), which mediates the neural and hormonal regulation of glycogen breakdown (glycogenolysis) by phosphorylating and thereby activating glycogen phosphorylase. In vitro, phosphorylates PYGM, TNNI3, MAPT/TAU, GAP43 and NRGN/RC3 (By similarity).