

PGLS Polyclonal Antibody
Catalog # AP71874**Specification**

PGLS Polyclonal Antibody - Product Information

Application	WB
Primary Accession	O95336
Reactivity	Human
Host	Rabbit
Clonality	Polyclonal

PGLS Polyclonal Antibody - Additional Information**Gene ID** 25796**Other Names**

PGLS; 6-phosphogluconolactonase; 6PGL

Dilution

WB~~Western Blot: 1/500 - 1/2000. Immunohistochemistry: 1/100 - 1/300. ELISA: 1/40000. Not yet tested in other applications.

Format

Liquid in PBS containing 50% glycerol, 0.5% BSA and 0.09% (W/V) sodium azide.

Storage Conditions

-20°C

PGLS Polyclonal Antibody - Protein Information**Name** PGLS ([HGNC:8903](#))**Function**

Hydrolysis of 6-phosphogluconolactone to 6-phosphogluconate.

Cellular Location

Cytoplasm.

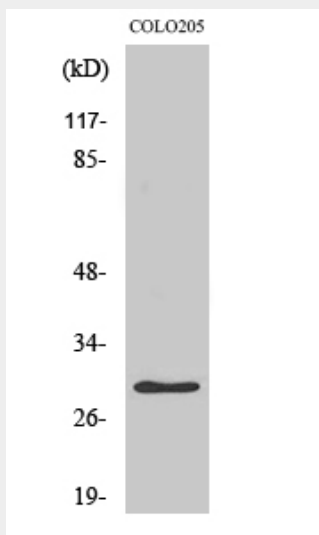
PGLS Polyclonal Antibody - Protocols

Provided below are standard protocols that you may find useful for product applications.

- [Western Blot](#)
- [Blocking Peptides](#)
- [Dot Blot](#)
- [Immunohistochemistry](#)

- [Immunofluorescence](#)
- [Immunoprecipitation](#)
- [Flow Cytometry](#)
- [Cell Culture](#)

PGLS Polyclonal Antibody - Images



PGLS Polyclonal Antibody - Background

Hydrolysis of 6-phosphogluconolactone to 6- phosphogluconate.