

**PFK-2 car Polyclonal Antibody**  
Catalog # AP71864

**Specification**

---

**PFK-2 car Polyclonal Antibody - Product Information**

Application	WB
Primary Accession	<a href="#">O60825</a>
Reactivity	Human, Mouse, Rat
Host	Rabbit
Clonality	Polyclonal

**PFK-2 car Polyclonal Antibody - Additional Information**

Gene ID 5208

**Other Names**

PFKFB2; 6-phosphofructo-2-kinase/fructose-2; 6-bisphosphatase 2; 6PF-2-K/Fru-2, 6-P2ase 2; PFK/FBPase 2; 6PF-2-K/Fru-2, 6-P2ase heart-type isozyme

**Dilution**

WB~~Western Blot: 1/500 - 1/2000. Immunohistochemistry: 1/100 - 1/300. ELISA: 1/5000. Not yet tested in other applications.

**Format**

Liquid in PBS containing 50% glycerol, 0.5% BSA and 0.09% (W/V) sodium azide.

**Storage Conditions**

-20°C

**PFK-2 car Polyclonal Antibody - Protein Information**

Name PFKFB2 ([HGNC:8873](#))

**Function**

Synthesis and degradation of fructose 2,6-bisphosphate.

**Tissue Location**

Heart.

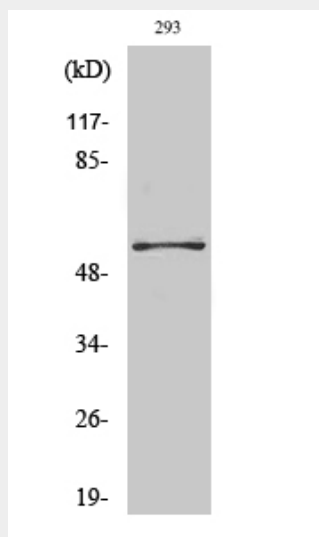
**PFK-2 car Polyclonal Antibody - Protocols**

Provided below are standard protocols that you may find useful for product applications.

- [Western Blot](#)
- [Blocking Peptides](#)
- [Dot Blot](#)

- [Immunohistochemistry](#)
- [Immunofluorescence](#)
- [Immunoprecipitation](#)
- [Flow Cytometry](#)
- [Cell Culture](#)

### PFK-2 car Polyclonal Antibody - Images



### PFK-2 car Polyclonal Antibody - Background

Synthesis and degradation of fructose 2,6-bisphosphate.