

PFKM Polyclonal Antibody
Catalog # AP71863

Specification

PFKM Polyclonal Antibody - Product Information

Application	WB
Primary Accession	P08237
Reactivity	Human, Mouse, Rat
Host	Rabbit
Clonality	Polyclonal

PFKM Polyclonal Antibody - Additional Information

Gene ID 5213

Other Names

PFKM; PFKX; 6-phosphofructokinase; muscle type; Phosphofructo-1-kinase isozyme A; PFK-A; Phosphofructokinase-M; Phosphofructokinase 1; Phosphohexokinase

Dilution

WB~~Western Blot: 1/500 - 1/2000. Immunohistochemistry: 1/100 - 1/300. ELISA: 1/10000. Not yet tested in other applications.

Format

Liquid in PBS containing 50% glycerol, 0.5% BSA and 0.09% (W/V) sodium azide.

Storage Conditions

-20°C

PFKM Polyclonal Antibody - Protein Information

Name PFKM

Synonyms PFKX

Function

Catalyzes the phosphorylation of D-fructose 6-phosphate to fructose 1,6-bisphosphate by ATP, the first committing step of glycolysis.

Cellular Location

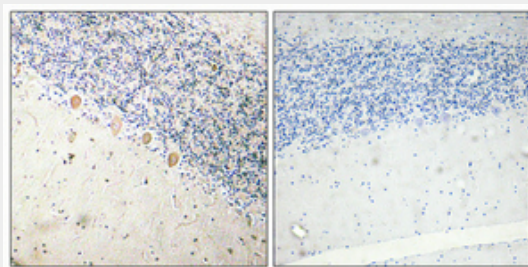
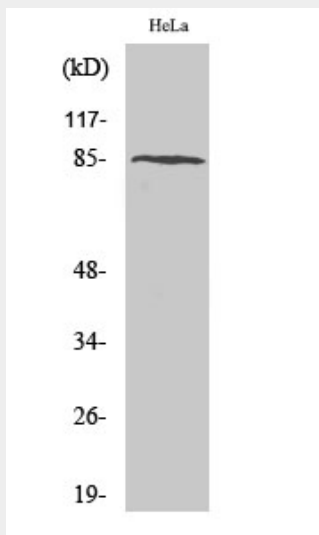
Cytoplasm {ECO:0000255|HAMAP-Rule:MF_03184}.

PFKM Polyclonal Antibody - Protocols

Provided below are standard protocols that you may find useful for product applications.

- [Western Blot](#)
- [Blocking Peptides](#)
- [Dot Blot](#)
- [Immunohistochemistry](#)
- [Immunofluorescence](#)
- [Immunoprecipitation](#)
- [Flow Cytometry](#)
- [Cell Culture](#)

PFKM Polyclonal Antibody - Images



PFKM Polyclonal Antibody - Background

Catalyzes the phosphorylation of D-fructose 6-phosphate to fructose 1,6-bisphosphate by ATP, the first committing step of glycolysis.