

**P-cadherin Polyclonal Antibody**  
Catalog # AP71797**Specification**

---

**P-cadherin Polyclonal Antibody - Product Information**

Application	<b>WB</b>
Primary Accession	<a href="#">P22223</a>
Reactivity	<b>Human</b>
Host	<b>Rabbit</b>
Clonality	<b>Polyclonal</b>

**P-cadherin Polyclonal Antibody - Additional Information****Gene ID** 1001**Other Names**

CDH3; CDHP; Cadherin-3; Placental cadherin; P-cadherin

**Dilution**

WB~~Western Blot: 1/500 - 1/2000. Immunohistochemistry: 1/100 - 1/300. ELISA: 1/10000. Not yet tested in other applications.

**Format**

Liquid in PBS containing 50% glycerol, 0.5% BSA and 0.09% (W/V) sodium azide.

**Storage Conditions**

-20°C

**P-cadherin Polyclonal Antibody - Protein Information****Name** CDH3**Synonyms** CDHP**Function**

Cadherins are calcium-dependent cell adhesion proteins. They preferentially interact with themselves in a homophilic manner in connecting cells; cadherins may thus contribute to the sorting of heterogeneous cell types.

**Cellular Location**

Cell membrane; Single-pass type I membrane protein

**Tissue Location**

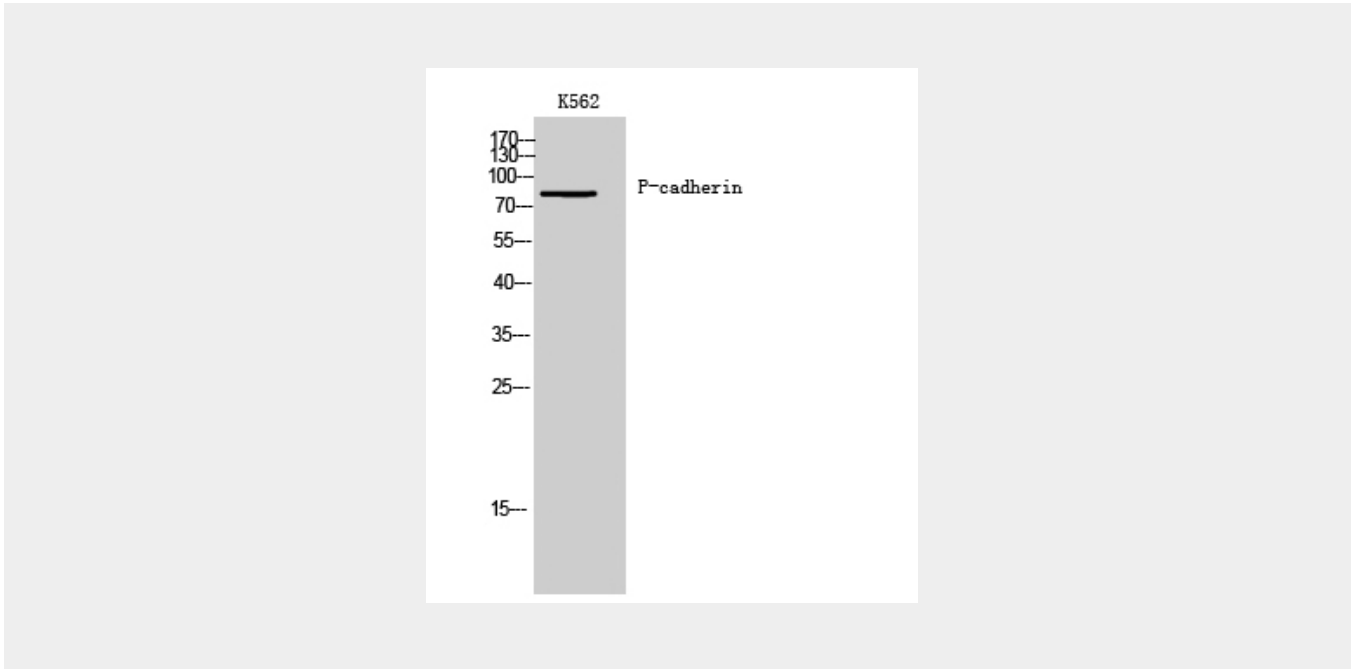
Expressed in some normal epithelial tissues and in some carcinoma cell lines.

**P-cadherin Polyclonal Antibody - Protocols**

Provided below are standard protocols that you may find useful for product applications.

- [Western Blot](#)
- [Blocking Peptides](#)
- [Dot Blot](#)
- [Immunohistochemistry](#)
- [Immunofluorescence](#)
- [Immunoprecipitation](#)
- [Flow Cytometry](#)
- [Cell Culture](#)

#### **P-cadherin Polyclonal Antibody - Images**



#### **P-cadherin Polyclonal Antibody - Background**

Cadherins are calcium-dependent cell adhesion proteins. They preferentially interact with themselves in a homophilic manner in connecting cells; cadherins may thus contribute to the sorting of heterogeneous cell types.