

PBF Polyclonal Antibody
Catalog # AP71792**Specification**

PBF Polyclonal Antibody - Product Information

Application	WB
Primary Accession	P53801
Reactivity	Human, Mouse, Rat
Host	Rabbit
Clonality	Polyclonal

PBF Polyclonal Antibody - Additional Information**Gene ID** 754**Other Names**

PTTG1IP; C21orf1; C21orf3; Pituitary tumor-transforming gene 1 protein-interacting protein; Pituitary tumor-transforming gene protein-binding factor; PBF; PTTG-binding factor

Dilution

WB~~Western Blot: 1/500 - 1/2000. Immunohistochemistry: 1/100 - 1/300. Immunofluorescence: 1/200 - 1/1000. ELISA: 1/10000. Not yet tested in other applications.

Format

Liquid in PBS containing 50% glycerol, 0.5% BSA and 0.09% (W/V) sodium azide.

Storage Conditions

-20°C

PBF Polyclonal Antibody - Protein Information**Name** PTTG1IP**Synonyms** C21orf1, C21orf3**Function**

May facilitate PTTG1 nuclear translocation.

Cellular Location

Membrane; Single-pass type I membrane protein. Cytoplasm. Nucleus Note=According to PubMed:10781616, it is found in the cytoplasm and the nucleus

Tissue Location

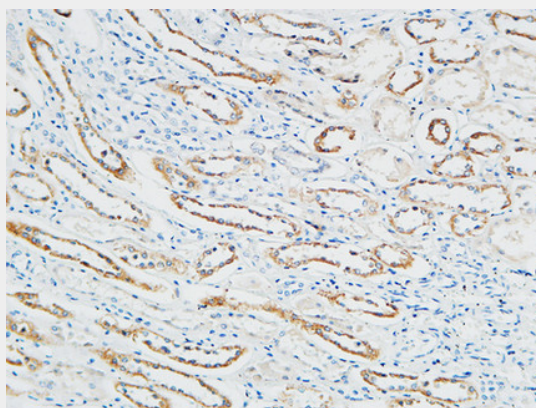
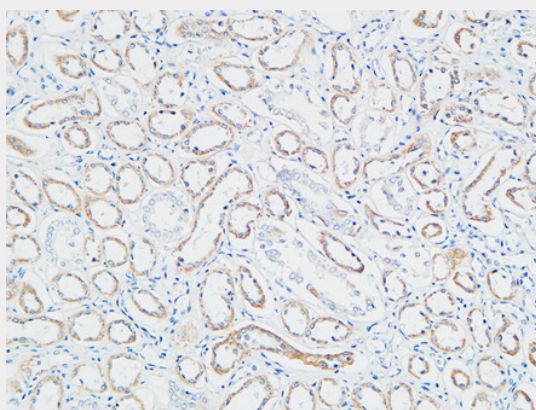
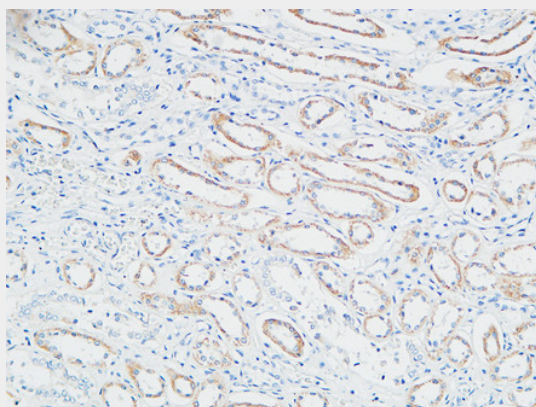
Ubiquitous.

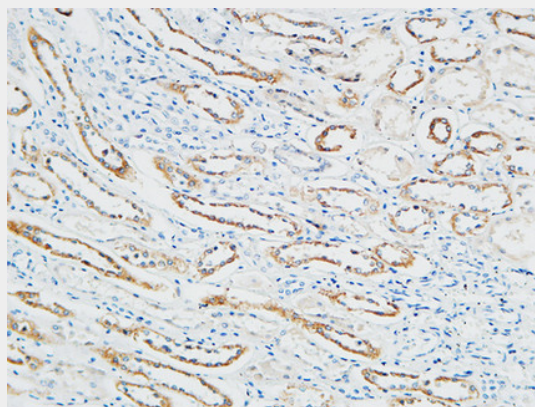
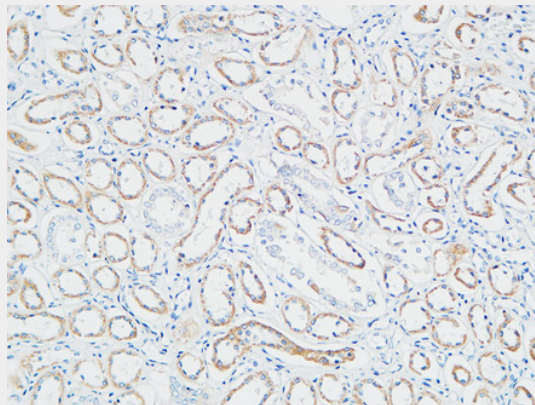
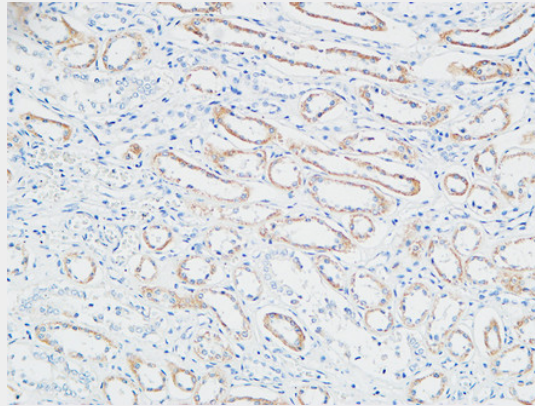
PBF Polyclonal Antibody - Protocols

Provided below are standard protocols that you may find useful for product applications.

- [Western Blot](#)
- [Blocking Peptides](#)
- [Dot Blot](#)
- [Immunohistochemistry](#)
- [Immunofluorescence](#)
- [Immunoprecipitation](#)
- [Flow Cytometry](#)
- [Cell Culture](#)

PBF Polyclonal Antibody - Images





PBF Polyclonal Antibody - Background

May facilitate PTTG1 nuclear translocation.