

Pax-8 Polyclonal Antibody
Catalog # AP71785**Specification**

Pax-8 Polyclonal Antibody - Product Information

Application	WB
Primary Accession	Q06710
Reactivity	Human, Mouse, Rat
Host	Rabbit
Clonality	Polyclonal

Pax-8 Polyclonal Antibody - Additional Information**Gene ID** 7849**Other Names**

PAX8; Paired box protein Pax-8

Dilution

WB~~Western Blot: 1/500 - 1/2000. Immunohistochemistry: 1/100 - 1/300. ELISA: 1/10000. Not yet tested in other applications.

Format

Liquid in PBS containing 50% glycerol, 0.5% BSA and 0.09% (W/V) sodium azide.

Storage Conditions

-20°C

Pax-8 Polyclonal Antibody - Protein Information**Name** PAX8**Function**

Transcription factor for the thyroid-specific expression of the genes exclusively expressed in the thyroid cell type, maintaining the functional differentiation of such cells.

Cellular Location

Nucleus.

Tissue Location

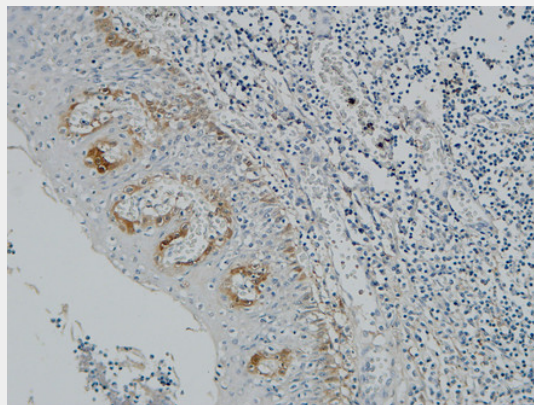
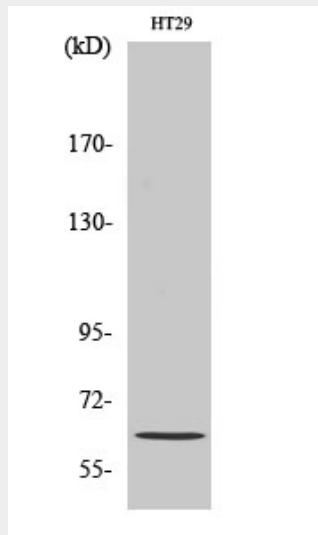
Expressed in the excretory system, thyroid gland and Wilms tumors

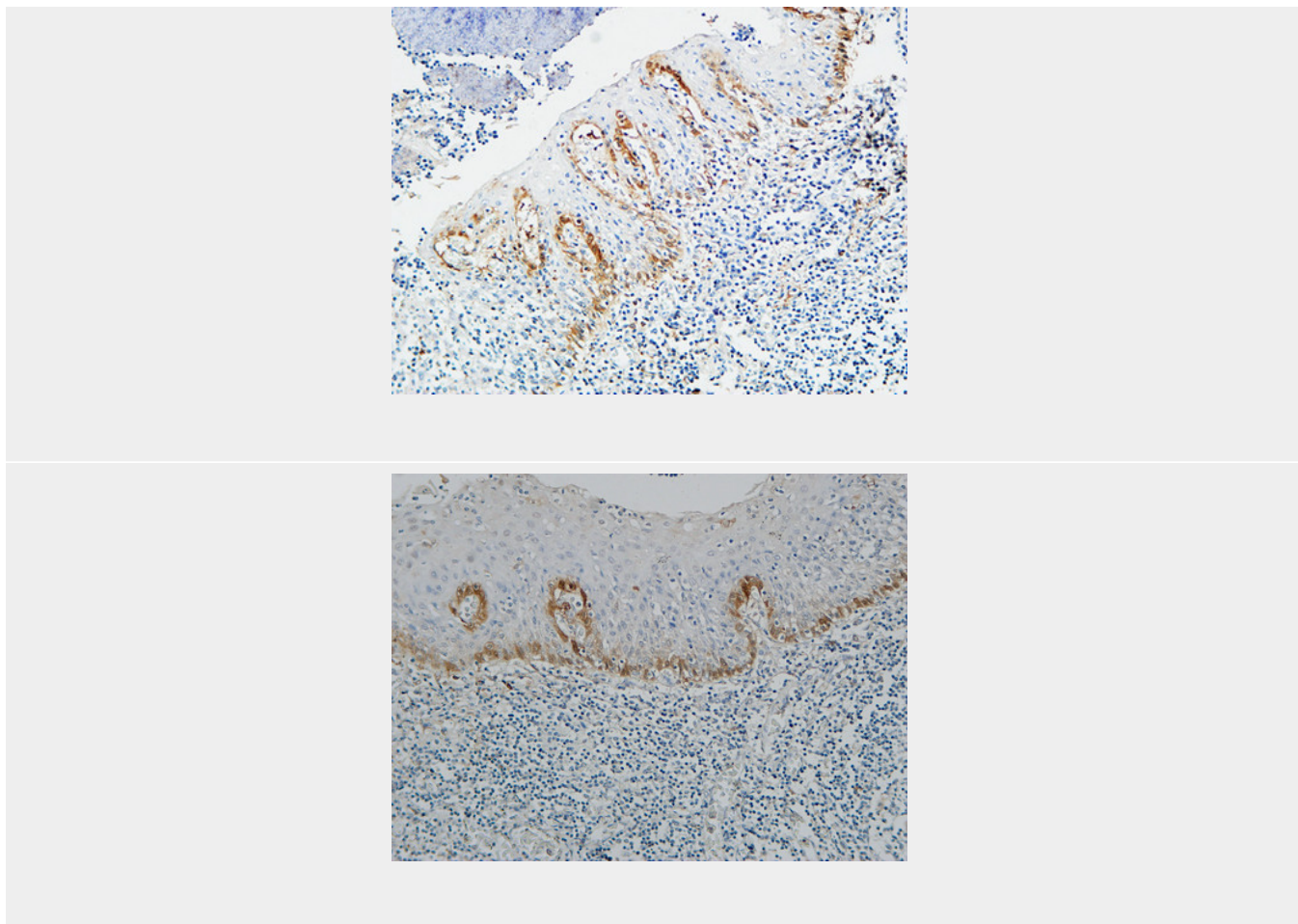
Pax-8 Polyclonal Antibody - Protocols

Provided below are standard protocols that you may find useful for product applications.

- [Western Blot](#)
- [Blocking Peptides](#)
- [Dot Blot](#)
- [Immunohistochemistry](#)
- [Immunofluorescence](#)
- [Immunoprecipitation](#)
- [Flow Cytometry](#)
- [Cell Culture](#)

Pax-8 Polyclonal Antibody - Images





Pax-8 Polyclonal Antibody - Background

Transcription factor for the thyroid-specific expression of the genes exclusively expressed in the thyroid cell type, maintaining the functional differentiation of such cells.