

PABP3 Polyclonal Antibody
Catalog # AP71746**Specification**

PABP3 Polyclonal Antibody - Product Information

Application	WB
Primary Accession	O9H361
Reactivity	Human
Host	Rabbit
Clonality	Polyclonal

PABP3 Polyclonal Antibody - Additional Information**Gene ID** 5042**Other Names**

PABPC3; PABP3; PABPL3; Polyadenylate-binding protein 3; PABP-3; Poly(A)-binding protein 3; Testis-specific poly(A)-binding protein

Dilution

WB~~Western Blot: 1/500 - 1/2000.IHC-p:1:50-300 ELISA: 1/20000. Not yet tested in other applications.

Format

Liquid in PBS containing 50% glycerol, 0.5% BSA and 0.09% (W/V) sodium azide.

Storage Conditions

-20°C

PABP3 Polyclonal Antibody - Protein Information**Name** PABPC3**Synonyms** PABP3, PABPL3**Function**

Binds the poly(A) tail of mRNA. May be involved in cytoplasmic regulatory processes of mRNA metabolism. Binds poly(A) with a slightly lower affinity as compared to PABPC1.

Cellular Location

Cytoplasm.

Tissue Location

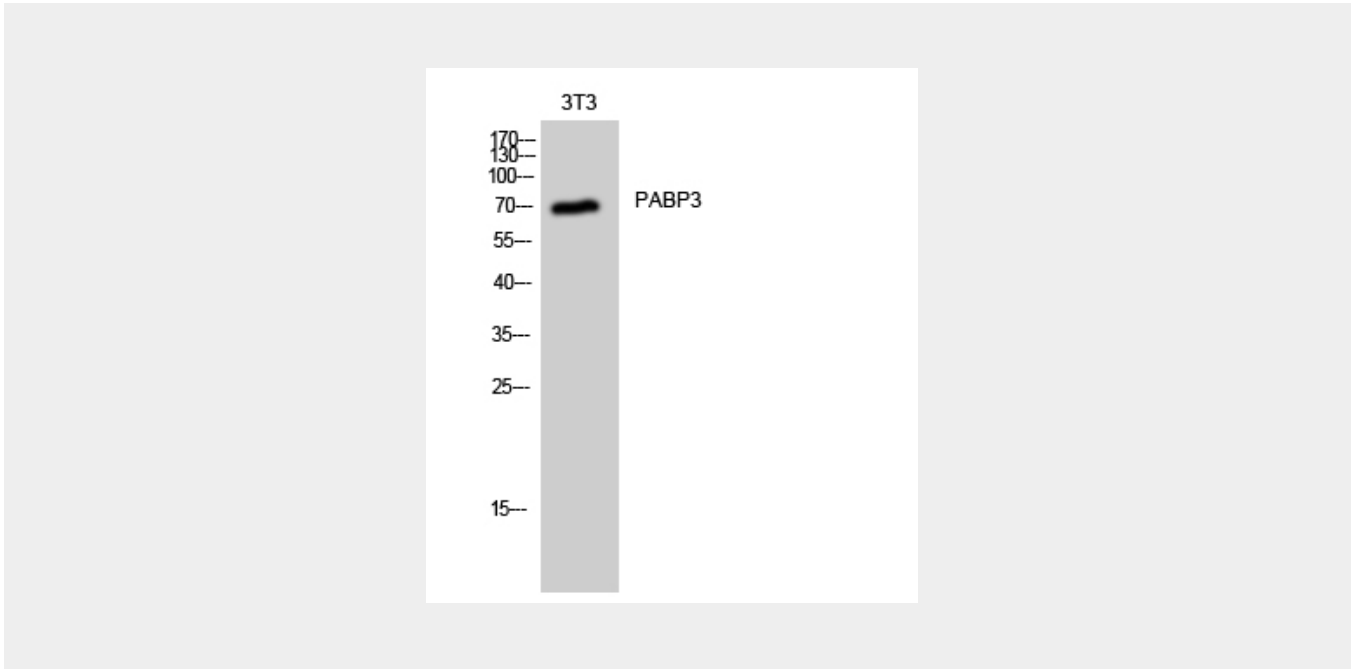
Testis specific..

PABP3 Polyclonal Antibody - Protocols

Provided below are standard protocols that you may find useful for product applications.

- [Western Blot](#)
- [Blocking Peptides](#)
- [Dot Blot](#)
- [Immunohistochemistry](#)
- [Immunofluorescence](#)
- [Immunoprecipitation](#)
- [Flow Cytometry](#)
- [Cell Culture](#)

PABP3 Polyclonal Antibody - Images



PABP3 Polyclonal Antibody - Background

Binds the poly(A) tail of mRNA. May be involved in cytoplasmic regulatory processes of mRNA metabolism. Binds poly(A) with a slightly lower affinity as compared to PABPC1.