

**p70 S6 kinase  $\beta$  Polyclonal Antibody**  
Catalog # AP71742**Specification****p70 S6 kinase  $\beta$  Polyclonal Antibody - Product Information**

Application	WB
Primary Accession	<a href="#">Q9UBS0</a>
Reactivity	Human, Mouse
Host	Rabbit
Clonality	Polyclonal

**p70 S6 kinase  $\beta$  Polyclonal Antibody - Additional Information****Gene ID** 6199**Other Names**

RPS6KB2; STK14B; Ribosomal protein S6 kinase beta-2; S6K-beta-2; S6K2; 70 kDa ribosomal protein S6 kinase 2; P70S6K2; p70-S6K 2; S6 kinase-related kinase; SRK; Serine/threonine-protein kinase 14B; p70 ribosomal S6 kinase beta; S6K-beta; p70

**Dilution**

WB~~Western Blot: 1/500 - 1/2000. Immunohistochemistry: 1/100 - 1/300. ELISA: 1/5000. Not yet tested in other applications.

**Format**

Liquid in PBS containing 50% glycerol, 0.5% BSA and 0.09% (W/V) sodium azide.

**Storage Conditions**

-20°C

**p70 S6 kinase  $\beta$  Polyclonal Antibody - Protein Information****Name** RPS6KB2**Synonyms** STK14B**Function**

Phosphorylates specifically ribosomal protein S6 (PubMed:&lt;a href="http://www.uniprot.org/citations/29750193" target="\_blank"&gt;29750193&lt;/a&gt;). Seems to act downstream of mTOR signaling in response to growth factors and nutrients to promote cell proliferation, cell growth and cell cycle progression in an alternative pathway regulated by MEAK7 (PubMed:&lt;a href="http://www.uniprot.org/citations/29750193" target="\_blank"&gt;29750193&lt;/a&gt;).

**Cellular Location**

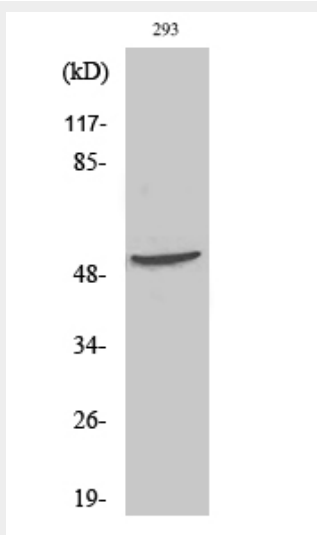
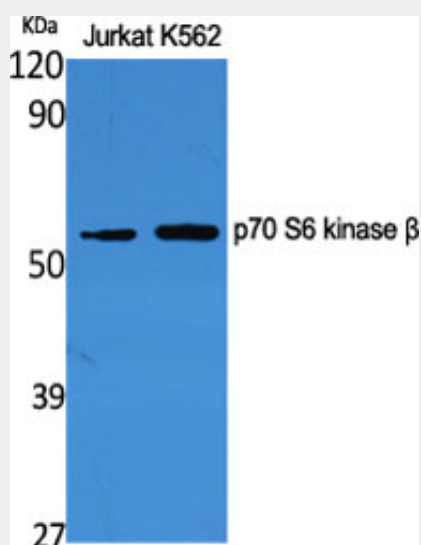
Cytoplasm. Nucleus.

## p70 S6 kinase $\beta$ Polyclonal Antibody - Protocols

Provided below are standard protocols that you may find useful for product applications.

- [Western Blot](#)
- [Blocking Peptides](#)
- [Dot Blot](#)
- [Immunohistochemistry](#)
- [Immunofluorescence](#)
- [Immunoprecipitation](#)
- [Flow Cytometry](#)
- [Cell Culture](#)

## p70 S6 kinase $\beta$ Polyclonal Antibody - Images



## p70 S6 kinase $\beta$ Polyclonal Antibody - Background

Phosphorylates specifically ribosomal protein S6.