

**PIM3 Antibody (C-term)**  
**Purified Rabbit Polyclonal Antibody (Pab)**  
**Catalog # AP7171a**

**Specification**

---

**PIM3 Antibody (C-term) - Product Information**

Application	<b>WB, IHC-P,E</b>
Primary Accession	<a href="#">O86V86</a>
Other Accession	<a href="#">O70444</a> , <a href="#">P58750</a>
Reactivity	<b>Human, Mouse</b>
Predicted	<b>Rat</b>
Host	<b>Rabbit</b>
Clonality	<b>Polyclonal</b>
Isotype	<b>Rabbit IgG</b>
Antigen Region	<b>259-288</b>

**PIM3 Antibody (C-term) - Additional Information**

**Gene ID** 415116

**Other Names**

Serine/threonine-protein kinase pim-3, PIM3

**Target/Specificity**

This PIM3 antibody is generated from rabbits immunized with a KLH conjugated synthetic peptide between 259-288 amino acids from the C-terminal region of human PIM3.

**Dilution**

WB~~1:1000  
IHC-P~~1:10~50

**Format**

Purified polyclonal antibody supplied in PBS with 0.09% (W/V) sodium azide. This antibody is prepared by Saturated Ammonium Sulfate (SAS) precipitation followed by dialysis against PBS.

**Storage**

Maintain refrigerated at 2-8°C for up to 2 weeks. For long term storage store at -20°C in small aliquots to prevent freeze-thaw cycles.

**Precautions**

PIM3 Antibody (C-term) is for research use only and not for use in diagnostic or therapeutic procedures.

**PIM3 Antibody (C-term) - Protein Information**

**Name** PIM3

**Function** Proto-oncogene with serine/threonine kinase activity that can prevent apoptosis,

promote cell survival and protein translation. May contribute to tumorigenesis through: the delivery of survival signaling through phosphorylation of BAD which induces release of the anti-apoptotic protein Bcl-X(L), the regulation of cell cycle progression, protein synthesis and by regulation of MYC transcriptional activity. Additionally to this role on tumorigenesis, can also negatively regulate insulin secretion by inhibiting the activation of MAPK1/3 (ERK1/2), through SOCS6. Involved also in the control of energy metabolism and regulation of AMPK activity in modulating MYC and PPARGC1A protein levels and cell growth.

#### Cellular Location

Cytoplasm.

#### Tissue Location

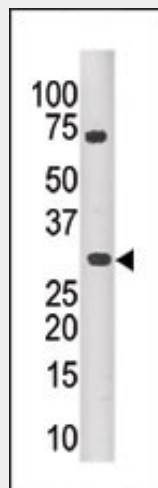
Detected in various tissues, including the heart, brain, lung, kidney, spleen, placenta, skeletal muscle, and peripheral blood leukocytes. Not found or barely expressed in the normal adult endoderm-derived organs such as colon, thymus, liver, or small intestine. However, expression is augmented in premalignant and malignant lesions of these organs.

#### PIM3 Antibody (C-term) - Protocols

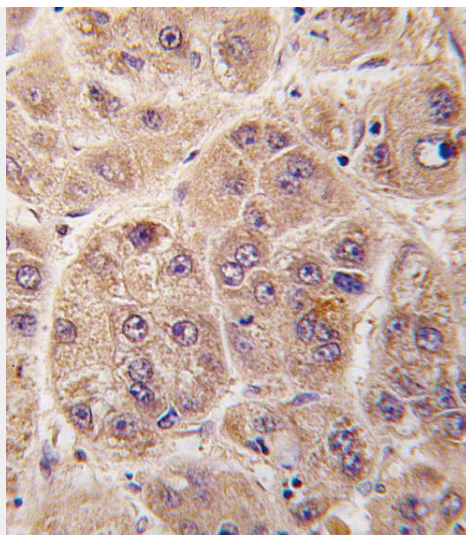
Provided below are standard protocols that you may find useful for product applications.

- [Western Blot](#)
- [Blocking Peptides](#)
- [Dot Blot](#)
- [Immunohistochemistry](#)
- [Immunofluorescence](#)
- [Immunoprecipitation](#)
- [Flow Cytometry](#)
- [Cell Culture](#)

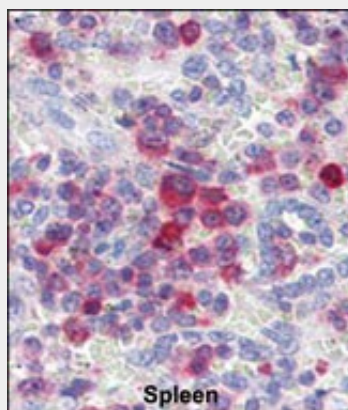
#### PIM3 Antibody (C-term) - Images



The anti-PIM3 Pab (Cat. #AP7171a) is used in Western blot to detect PIM3 in mouse kidney tissue lysate.



Formalin-fixed and paraffin-embedded human hepatocarcinoma tissue reacted with PIM3 antibody (C-term)(Cat.#AP7171a), which was peroxidase-conjugated to the secondary antibody, followed by DAB staining. This data demonstrates the use of this antibody for immunohistochemistry; clinical relevance has not been evaluated.



Formalin-fixed and paraffin-embedded human Spleen tissue reacted with PIM3 antibody (C-term)(Cat.#AP7171a), which was peroxidase-conjugated to the secondary antibody, followed by AEC staining. This data demonstrates the use of this antibody for immunohistochemistry; clinical relevance has not been evaluated.

### **PIM3 Antibody (C-term) - Background**

PIM3 is a member of the Ser/Thr protein kinase family that may be involved in cell cycle progression and anti-apoptosis process. This protein has been implicated in proliferation of human hepatoma cell lines. PIM3 is widely expressed, with the exception of no expression observed in colon, thymus, and small intestine. PIM3 is expressed in human hepatoma cell lines but not in normal liver tissues.

### **PIM3 Antibody (C-term) - References**

Mikkers, H., et al., Mol. Cell. Biol. 24(13):6104-6115 (2004). Eichmann, A., et al., Oncogene 19(9):1215-1224 (2000).

### **PIM3 Antibody (C-term) - Citations**

- [Expression and significance of Pim-3 kinase in adult T-cell leukemia.](#)
- [PIM kinases are essential for chronic lymphocytic leukemia cell survival \(PIM2/3\) and CXCR4-mediated microenvironmental interactions \(PIM1\).](#)
- [PIM kinases are progression markers and emerging therapeutic targets in diffuse large B-cell](#)

[lymphoma.](#)

- [Pim kinase inhibitor, SGI-1776, induces apoptosis in chronic lymphocytic leukemia cells.](#)
- [KSHV reactivation from latency requires Pim-1 and Pim-3 kinases to inactivate the latency-associated nuclear antigen LANA.](#)