

**p52 S6 kinase Polyclonal Antibody**  
Catalog # AP71706**Specification****p52 S6 kinase Polyclonal Antibody - Product Information**

Application	WB
Primary Accession	<a href="#">Q96S38</a>
Reactivity	Human, Mouse
Host	Rabbit
Clonality	Polyclonal

**p52 S6 kinase Polyclonal Antibody - Additional Information****Gene ID** 26750**Other Names**

RPS6KC1; RPK118; Ribosomal protein S6 kinase delta-1; S6K-delta-1; 52 kDa ribosomal protein S6 kinase; Ribosomal S6 kinase-like protein with two PSK domains 118 kDa protein; SPHK1-binding protein

**Dilution**

WB~~Western Blot: 1/500 - 1/2000. Immunofluorescence: 1/200 - 1/1000. ELISA: 1/20000. Not yet tested in other applications.

**Format**

Liquid in PBS containing 50% glycerol, 0.5% BSA and 0.09% (W/V) sodium azide.

**Storage Conditions**

-20°C

**p52 S6 kinase Polyclonal Antibody - Protein Information****Name** RPS6KC1**Synonyms** RPK118**Function**

May be involved in transmitting sphingosine-1 phosphate (SPP)-mediated signaling into the cell (PubMed:<a href="http://www.uniprot.org/citations/12077123" target="\_blank">12077123</a>). Plays a role in the recruitment of PRDX3 to early endosomes (PubMed:<a href="http://www.uniprot.org/citations/15750338" target="\_blank">15750338</a>).

**Cellular Location**

Cytoplasm. Membrane Early endosome

**Tissue Location**

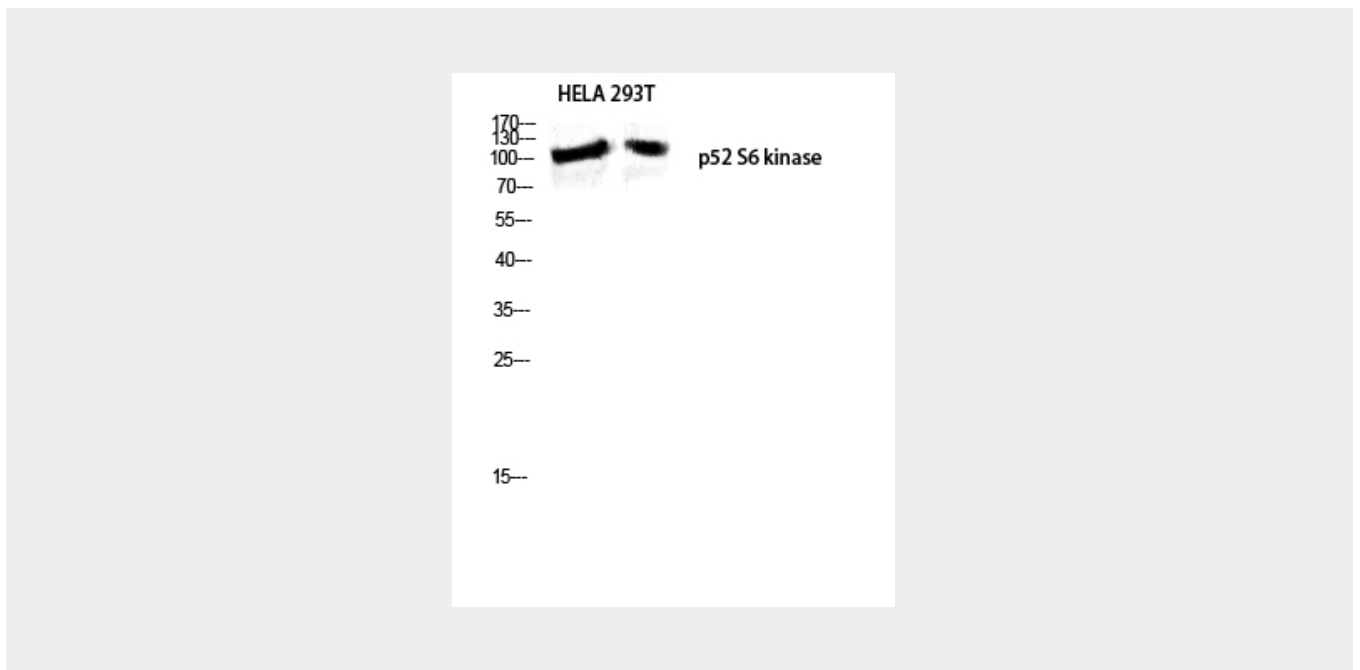
Highly expressed in testis, skeletal muscle, brain, heart, placenta, kidney and liver and weakly expressed in thymus, small intestine, lung and colon.

## p52 S6 kinase Polyclonal Antibody - Protocols

Provided below are standard protocols that you may find useful for product applications.

- [Western Blot](#)
- [Blocking Peptides](#)
- [Dot Blot](#)
- [Immunohistochemistry](#)
- [Immunofluorescence](#)
- [Immunoprecipitation](#)
- [Flow Cytometry](#)
- [Cell Culture](#)

## p52 S6 kinase Polyclonal Antibody - Images



## p52 S6 kinase Polyclonal Antibody - Background

May be involved in transmitting sphingosine-1 phosphate (SPP)-mediated signaling into the cell (PubMed:12077123). Plays a role in the recruitment of PRDX3 to early endosomes (PubMed:15750338).