

**p47-phox Polyclonal Antibody**  
Catalog # AP71702**Specification**

---

**p47-phox Polyclonal Antibody - Product Information**

Application	WB
Primary Accession	<a href="#">P14598</a>
Reactivity	Human, Monkey
Host	Rabbit
Clonality	Polyclonal

**p47-phox Polyclonal Antibody - Additional Information****Gene ID** 653361**Other Names**

NCF1; NOXO2; SH3PXD1A; Neutrophil cytosol factor 1; NCF-1; 47 kDa autosomal chronic granulomatous disease protein; 47 kDa neutrophil oxidase factor; NCF-47K; Neutrophil NADPH oxidase factor 1; Nox organizer 2; Nox-organizing protein 2; SH3

**Dilution**

WB~~Western Blot: 1/500 - 1/2000. Immunohistochemistry: 1/100 - 1/300. Immunofluorescence: 1/200 - 1/1000. ELISA: 1/20000. Not yet tested in other applications.

**Format**

Liquid in PBS containing 50% glycerol, 0.5% BSA and 0.09% (W/V) sodium azide.

**Storage Conditions**

-20°C

**p47-phox Polyclonal Antibody - Protein Information****Name** NCF1**Synonyms** NOXO2, SH3PXD1A**Function**

NCF2, NCF1, and a membrane bound cytochrome b558 are required for activation of the latent NADPH oxidase (necessary for superoxide production).

**Cellular Location**

Cytoplasm, cytosol. Membrane; Peripheral membrane protein; Cytoplasmic side

**Tissue Location**

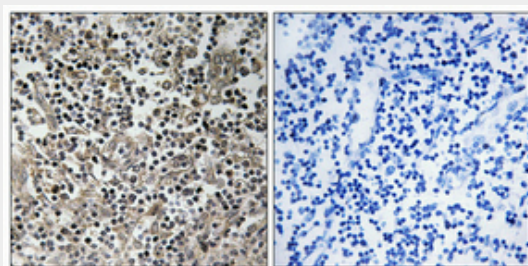
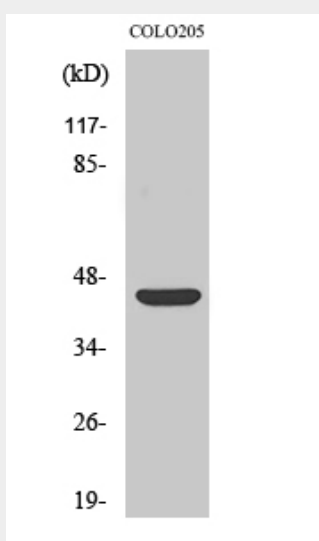
Detected in peripheral blood monocytes and neutrophils (at protein level).

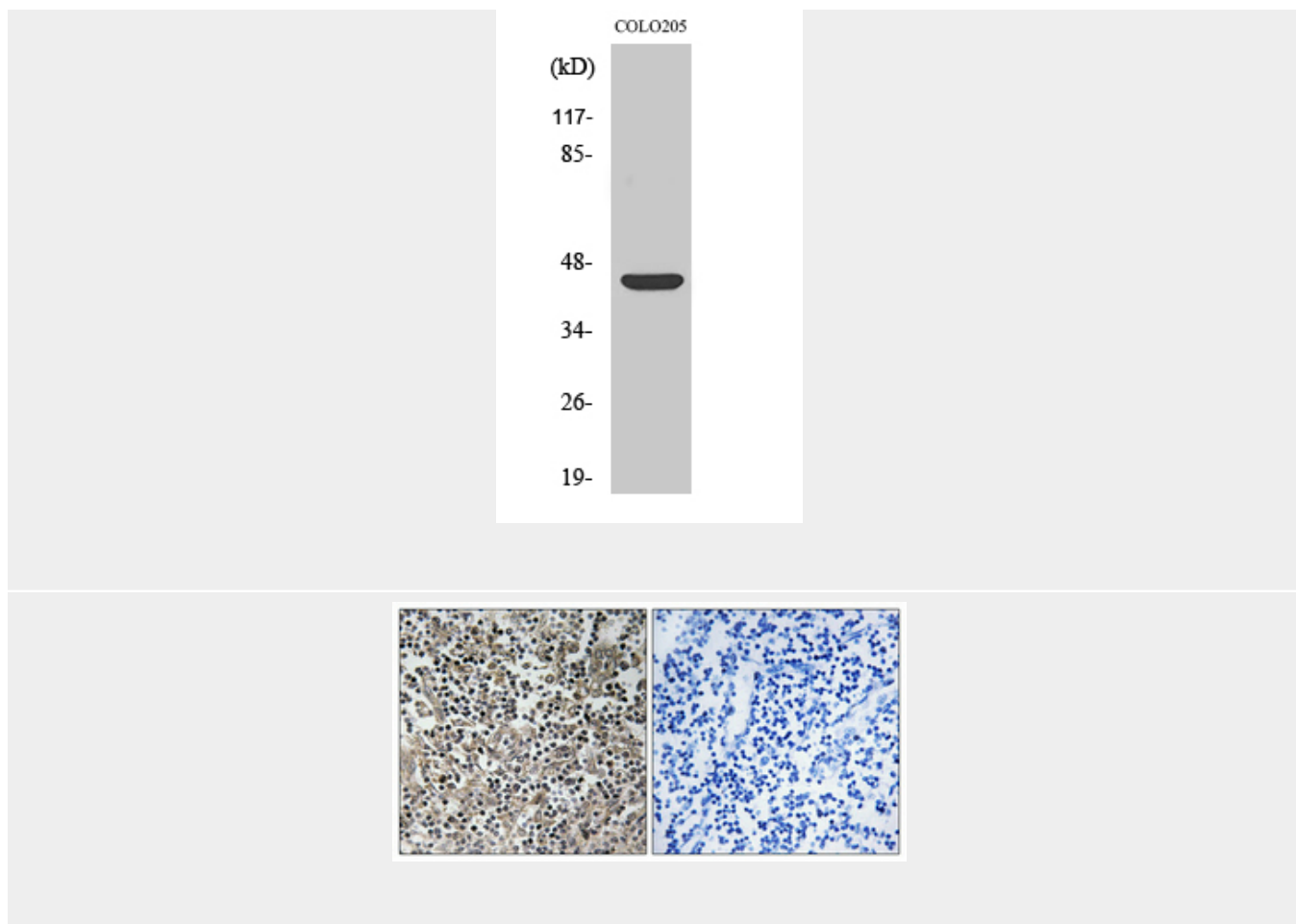
## p47-phox Polyclonal Antibody - Protocols

Provided below are standard protocols that you may find useful for product applications.

- [Western Blot](#)
- [Blocking Peptides](#)
- [Dot Blot](#)
- [Immunohistochemistry](#)
- [Immunofluorescence](#)
- [Immunoprecipitation](#)
- [Flow Cytometry](#)
- [Cell Culture](#)

## p47-phox Polyclonal Antibody - Images





#### **p47-phox Polyclonal Antibody - Background**

NCF2, NCF1, and a membrane bound cytochrome b558 are required for activation of the latent NADPH oxidase (necessary for superoxide production).